



## Rabbit Anti-MEG2 antibody

SL18751R

<b>Product Name:</b>	MEG2
<b>Chinese Name:</b>	蛋白酪氨酸磷酸酶MEG2抗体
<b>Alias:</b>	MEG2; PTP-MEG2; non-receptor type 9; protein tyrosine phosphatase; Protein tyrosine phosphatase MEG2; Protein-tyrosine phosphatase MEG2; PTN9_HUMAN; PTPase MEG2; Ptpn9; Tyrosine protein phosphatase non receptor type 9; Tyrosine-protein phosphatase non-receptor type 9.
<b>Organism Species:</b>	Rabbit
<b>Clonality:</b>	Polyclonal
<b>React Species:</b>	Human,Mouse,Rat,Dog,Cow,Rabbit,Sheep,
<b>Applications:</b>	WB=1:500-2000ELISA=1:500-1000 not yet tested in other applications. optimal dilutions/concentrations should be determined by the end user.
<b>Molecular weight:</b>	68kDa
<b>Cellular localization:</b>	cytoplasmic
<b>Form:</b>	Lyophilized or Liquid
<b>Concentration:</b>	1mg/ml
<b>immunogen:</b>	KLH conjugated synthetic peptide derived from human MEG2:301-400/593
<b>Lsotype:</b>	IgG
<b>Purification:</b>	affinity purified by Protein A
<b>Storage Buffer:</b>	0.01M TBS(pH7.4) with 1% BSA, 0.03% Proclin300 and 50% Glycerol.
<b>Storage:</b>	Store at -20 °C for one year. Avoid repeated freeze/thaw cycles. The lyophilized antibody is stable at room temperature for at least one month and for greater than a year when kept at -20°C. When reconstituted in sterile pH 7.4 0.01M PBS or diluent of antibody the antibody is stable for at least two weeks at 2-4 °C.
<b>PubMed:</b>	<a href="#">PubMed</a>
<b>Product Detail:</b>	The protein encoded by this gene is a member of the protein tyrosine phosphatase (PTP) family. PTPs are known to be signaling molecules that regulate a variety of cellular processes including cell growth, differentiation, mitotic cycle, and oncogenic transformation. This PTP contains an N-terminal domain that shares a significant similarity with yeast SEC14, which is a protein that has phosphatidylinositol transfer

activity and is required for protein secretion through the Golgi complex in yeast. This PTP was found to be activated by polyphosphoinositide, and is thought to be involved in signaling events regulating phagocytosis. [provided by RefSeq, Jul 2008]

**Function:**

Protein-tyrosine phosphatase that could participate in the transfer of hydrophobic ligands or in functions of the Golgi apparatus.

**Subcellular Location:**

Cytoplasm.

**Similarity:**

Belongs to the protein-tyrosine phosphatase family.

Non-receptor class 3 subfamily.

Contains 1 CRAL-TRIO domain.

Contains 1 tyrosine-protein phosphatase domain.

**SWISS:**

P43378

**Gene ID:**

5780

**Database links:**

[Entrez Gene: 5780](#) Human

[Omim: 600768](#) Human

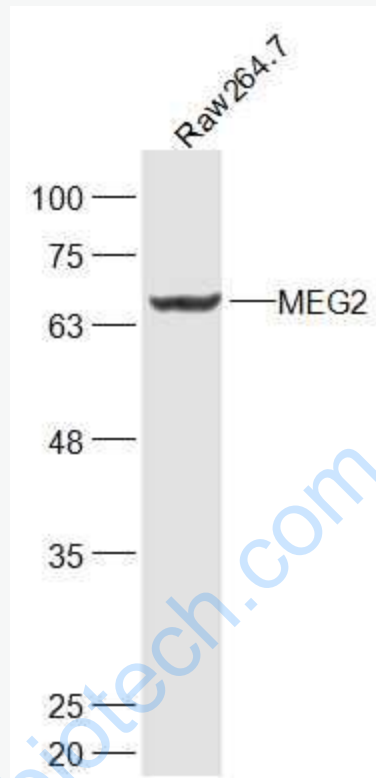
[SwissProt: P43378](#) Human

[Unigene: 445775](#) Human

**Important Note:**

This product as supplied is intended for research use only, not for use in human, therapeutic or diagnostic applications.

Picture:



Sample:

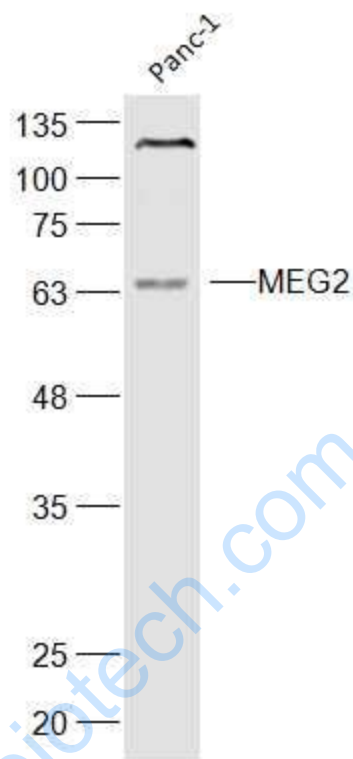
Raw264.7 (Mouse) Lysate at 30 ug

Primary: Anti-MEG2 (SL18751R) at 1/300 dilution

Secondary: IRDye800CW Goat Anti-Rabbit IgG at 1/20000 dilution

Predicted band size: 68 kD

Observed band size: 68 kD



Sample:

Panc-1(Human) Cell Lysate at 30 ug

Primary: Anti-MEG2 (SL18751R) at 1/300 dilution

Secondary: IRDye800CW Goat Anti-Rabbit IgG at 1/20000 dilution

Predicted band size: 68kD

Observed band size: 68 kD