



Rabbit Anti-ME2 antibody

SL18753R

Product Name:	ME2
Chinese Name:	胞浆苹果酸酶2抗体
Alias:	Malate dehydrogenase; Malic enzyme 2; Malic enzyme 2 mitochondrial; Malic enzyme 2 NAD(+) dependent mitochondrial; Malic enzyme mitochondrial; Malic enzyme NAD(+) dependent mitochondrial; MAOM_HUMAN; ME 2; ME2; mitochondrial; NAD dependent malic enzyme mitochondrial; NAD ME; NAD-dependent malic enzyme; NAD-ME; ODS1; Pyruvic malic carboxylase.
Organism Species:	Rabbit
Clonality:	Polyclonal
React Species:	Human,Mouse,Rat,Dog,Pig,Cow,Horse,Rabbit,Sheep,
Applications:	WB=1:500-2000ELISA=1:500-1000IHC-P=1:400-800IHC-F=1:400-800ICC=1:100-500IF=1:100-500 (Paraffin sections need antigen repair) not yet tested in other applications. optimal dilutions/concentrations should be determined by the end user.
Molecular weight:	63kDa
Cellular localization:	cytoplasmic
Form:	Lyophilized or Liquid
Concentration:	1mg/ml
immunogen:	KLH conjugated synthetic peptide derived from human ME2:161-260/584
Lsotype:	IgG
Purification:	affinity purified by Protein A
Storage Buffer:	0.01M TBS(pH7.4) with 1% BSA, 0.03% Proclin300 and 50% Glycerol.
Storage:	Store at -20 °C for one year. Avoid repeated freeze/thaw cycles. The lyophilized antibody is stable at room temperature for at least one month and for greater than a year when kept at -20°C. When reconstituted in sterile pH 7.4 0.01M PBS or diluent of antibody the antibody is stable for at least two weeks at 2-4 °C.
PubMed:	PubMed
Product Detail:	Malate dehydrogenase; Malic enzyme 2; Malic enzyme 2 mitochondrial; Malic enzyme 2 NAD(+) dependent mitochondrial; Malic enzyme mitochondrial; Malic enzyme NAD(+) dependent mitochondrial; MAOM_HUMAN; ME 2; ME2; mitochondrial;

NAD dependent malic enzyme mitochondrial; NAD ME; NAD-dependent malic enzyme; NAD-ME; ODS1; Pyruvic malic carboxylase.

Subcellular Location:

Mitochondrion matrix.

Similarity:

Belongs to the malic enzymes family.

SWISS:

P23368

Gene ID:

4200

Database links:

[Entrez Gene: 4200](#) Human

[Entrez Gene: 107029](#) Mouse

[Omid: 154270](#) Human

[SwissProt: P23368](#) Human

[SwissProt: Q99KE1](#) Mouse

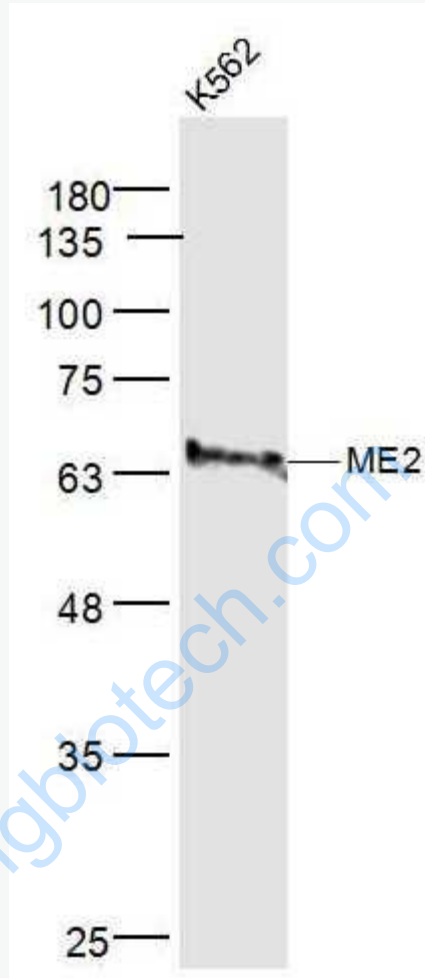
[Unigene: 233119](#) Human

[Unigene: 36817](#) Mouse

Important Note:

This product as supplied is intended for research use only, not for use in human, therapeutic or diagnostic applications.

Picture:



Sample:

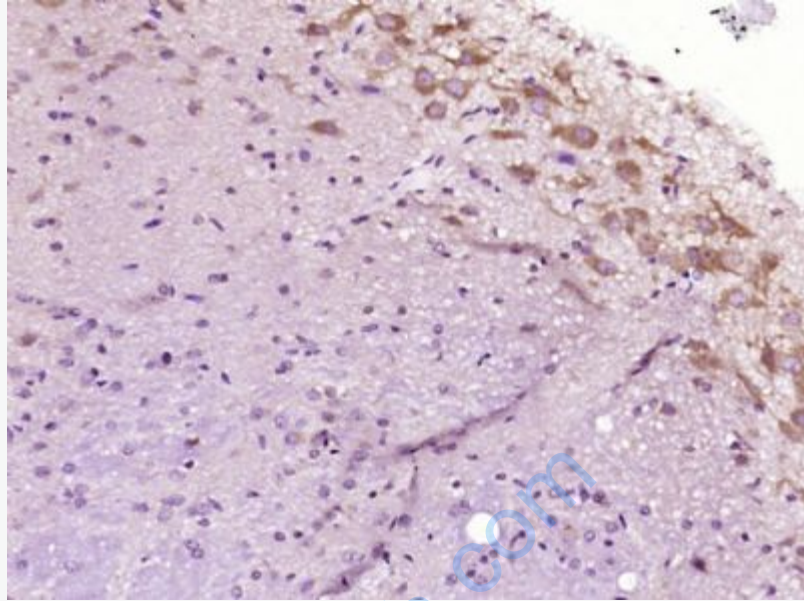
K562(Human) Cell Lysate at 40 ug

Primary: Anti-ME2 (SL18753R) at 1/300 dilution

Secondary: IRDye800CW Goat Anti-Rabbit IgG at 1/20000 dilution

Predicted band size: 63 kD

Observed band size: 63 kD



Paraformaldehyde-fixed, paraffin embedded (Rat brain); Antigen retrieval by boiling in sodium citrate buffer (pH6.0) for 15min; Block endogenous peroxidase by 3% hydrogen peroxide for 20 minutes; Blocking buffer (normal goat serum) at 37°C for 30min; Antibody incubation with (ME2) Polyclonal Antibody, Unconjugated (SL18753R) at 1:400 overnight at 4°C, followed by operating according to SP Kit(Rabbit) (sp-0023) instructions and DAB staining.