



Rabbit Anti-phospho-MEK7 (Thr275) antibody

SL18779R

Product Name:	phospho-MEK7 (Thr275)
Chinese Name:	磷酸化丝裂原活化蛋白激酶MKK7抗体
Alias:	MEK7 (phospho T275); MEK7 (phospho S275); p-MEK7 (phospho S275); c-Jun N-terminal kinase kinase 2; Dual specificity mitogen activated protein kinase kinase 7; Dual specificity mitogen-activated protein kinase kinase 7; JNK activating kinase 2; JNK kinase 2; JNK-activating kinase 2; Jnkk 2; Jnkk-2; Jnkk2; MAP kinase kinase 7; MAP2K7; MAPK/ERK kinase 7; MAPKK 7; MAPKK-7; MAPKK7; MEK 7; Mitogen Activated Protein Kinase kinase 7; MKK 7; MKK-7; MKK7; MP2K7_HUMAN; PRKMK 7; PRKMK-7; PRKMK7; Sek 2; Sek-2; Sek2.
Organism Species:	Rabbit
Clonality:	Polyclonal
React Species:	Human,Mouse,Rat,Dog,Pig,Cow,Rabbit,Sheep,
Applications:	WB=1:500-2000ELISA=1:500-1000IHC-P=1:400-800IHC-F=1:400-800ICC=1:100-500IF=1:100-500 (Paraffin sections need antigen repair) not yet tested in other applications. optimal dilutions/concentrations should be determined by the end user.
Molecular weight:	47kDa
Cellular localization:	The nucleuscytoplasmic
Form:	Lyophilized or Liquid
Concentration:	1mg/ml
immunogen:	KLH conjugated synthesised phosphopeptide derived from human MEK7 around the phosphorylation site of Thr275:AK(p-T)RS
Lsotype:	IgG
Purification:	affinity purified by Protein A
Storage Buffer:	0.01M TBS(pH7.4) with 1% BSA, 0.03% Proclin300 and 50% Glycerol.
Storage:	Store at -20 °C for one year. Avoid repeated freeze/thaw cycles. The lyophilized antibody is stable at room temperature for at least one month and for greater than a year when kept at -20°C. When reconstituted in sterile pH 7.4 0.01M PBS or diluent of antibody the antibody is stable for at least two weeks at 2-4 °C.

PubMed:[PubMed](#)

The protein encoded by this gene is a dual specificity protein kinase that belongs to the MAP kinase kinase family. This kinase specifically activates MAPK8/JNK1 and MAPK9/JNK2, and this kinase itself is phosphorylated and activated by MAP kinase kinase kinases including MAP3K1/MEKK1, MAP3K2/MEKK2, MAP3K3/MEKK5, and MAP4K2/GCK. This kinase is involved in the signal transduction mediating the cell responses to proinflammatory cytokines, and environmental stresses. Multiple alternatively spliced transcript variants encoding distinct isoforms have been found, but only one transcript variant has been supported and defined. [provided by RefSeq, Jul 2008].

Function:

Stress activated, dual specificity kinase that activates the JUN kinases MAPK8/JNK1, MAPK9/JNK2 and MAPK10/JNK3.

Subcellular Location:

Nucleus. Cytoplasm.

Tissue Specificity:

Ubiquitous; with highest level of expression in skeletal muscle. Isoform 3 is found at low levels in placenta, fetal liver, and skeletal muscle.

Post-translational modifications:

Activated by phosphorylation on Ser/Thr.

Similarity:

Belongs to the protein kinase superfamily.
STE Ser/Thr protein kinase family.
MAP kinase kinase subfamily.
Contains 1 protein kinase domain.

SWISS:

O14733

Gene ID:

5609

Database links:

[Entrez Gene: 5609](#) Human

[Entrez Gene: 26400](#) Mouse

[Entrez Gene: 363855](#) Rat

[Omim: 603014](#) Human

Product Detail:

[SwissProt: O14733](#) Human

[SwissProt: Q8CE90](#) Mouse

[SwissProt: Q4KSH7](#) Rat

[Unigene: 531754](#) Human

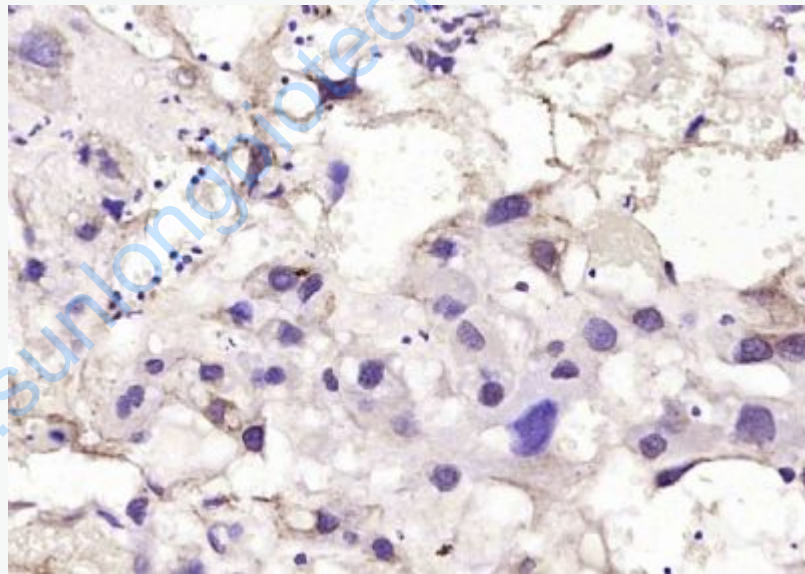
[Unigene: 3906](#) Mouse

[Unigene: 162081](#) Rat

Important Note:

This product as supplied is intended for research use only, not for use in human, therapeutic or diagnostic applications.

Picture:



Paraformaldehyde-fixed, paraffin embedded (rat placenta); Antigen retrieval by boiling in sodium citrate buffer (pH6.0) for 15min; Block endogenous peroxidase by 3% hydrogen peroxide for 20 minutes; Blocking buffer (normal goat serum) at 37°C for 30min; Antibody incubation with (phospho-MEK7 (Thr275)) Polyclonal Antibody, Unconjugated (SL18779R) at 1:200 overnight at 4°C, followed by

	operating according to SP Kit(Rabbit) (sp-0023) instructions and DAB staining.
--	--

www.sunlongbiotech.com