



Rabbit Anti-GPR50/Melatonin Related Receptor antibody

SL18785R

Product Name:	GPR50/Melatonin Related Receptor
Chinese Name:	褪黑激素相关受体抗体
Alias:	G protein coupled receptor 50; G protein-coupled receptor 50; GPR 50; Gpr50; H9; Mel1c; Melatonin-related receptor; MGC125342; MTNRL; MTR1L HUMAN.
Organism Species:	Rabbit
Clonality:	Polyclonal
React Species:	Human,Mouse,Rat,Dog,Horse,Rabbit,Cat,
Applications:	WB=1:500-2000ELISA=1:500-1000IHC-P=1:400-800IHC-F=1:400-800ICC=1:100-500IF=1:100-500 (Paraffin sections need antigen repair) not yet tested in other applications. optimal dilutions/concentrations should be determined by the end user.
Molecular weight:	67kDa
Cellular localization:	The cell membrane
Form:	Lyophilized or Liquid
Concentration:	1mg/ml
immunogen:	KLH conjugated synthetic peptide derived from human GPR50/Melatonin Related Receptor: 1-100/617<Cytoplasmic>
Lsotype:	IgG
Purification:	affinity purified by Protein A
Storage Buffer:	0.01M TBS(pH7.4) with 1% BSA, 0.03% Proclin300 and 50% Glycerol.
Storage:	Store at -20 °C for one year. Avoid repeated freeze/thaw cycles. The lyophilized antibody is stable at room temperature for at least one month and for greater than a year when kept at -20°C. When reconstituted in sterile pH 7.4 0.01M PBS or diluent of antibody the antibody is stable for at least two weeks at 2-4 °C.
PubMed:	PubMed
Product Detail:	This gene product belongs to the G-protein coupled receptor 1 family. Even though this protein shares similarity with the melatonin receptors, it does not bind melatonin, however, it inhibits melatonin receptor 1A function through heterodimerization.

Polymorphic variants of this gene have been associated with bipolar affective disorder in women. [provided by RefSeq, Jan 2010]

Subcellular Location:

Cell membrane.

Tissue Specificity:

Hypothalamus and pituitary.

Similarity:

Belongs to the G-protein coupled receptor 1 family.

SWISS:

Q13585

Gene ID:

9248

Database links:

[Entrez Gene: 530065](#) Cow

[Entrez Gene: 9248](#) Human

[Omir: 300207](#) Human

[SwissProt: Q13585](#) Human

[SwissProt: Q62953](#) Rat

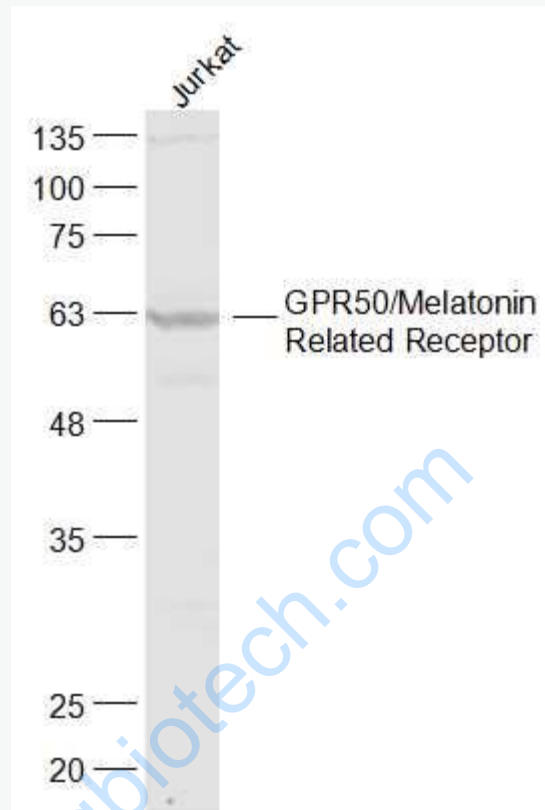
[Unigene: 567390](#) Human

[Unigene: 92385](#) Rat

Important Note:

This product as supplied is intended for research use only, not for use in human, therapeutic or diagnostic applications.

Picture:



Sample:

Jurkat(Human) Cell Lysate at 30 ug

Primary: Anti-GPR50/Melatonin Related Receptor (SL18785R) at 1/300 dilution

Secondary: IRDye800CW Goat Anti-Rabbit IgG at 1/20000 dilution

Predicted band size: 67 kD

Observed band size: 63 kD