



Rabbit Anti-MEPCE antibody

SL18788R

Product Name:	MEPCE
Chinese Name:	MEPCE蛋白抗体
Alias:	7SK snRNA methylphosphate capping enzyme; BCDIN3; Bicoid interacting protein 3 homolog; Bin3 bicoid interacting 3; Bin3 bicoid interacting 3 homolog (Drosophila); Bin3 bicoid interacting 3 homolog; Bin3 homolog; FLJ20257; MePCE; Methylphosphate capping enzyme.
Organism Species:	Rabbit
Clonality:	Polyclonal
React Species:	Human,Mouse,Rat,Dog,Pig,Cow,Rabbit,Sheep,Rhesus monkey
Applications:	ELISA=1:500-1000IHC-P=1:400-800IHC-F=1:400-800ICC=1:100-500IF=1:100-500 (Paraffin sections need antigen repair) not yet tested in other applications. optimal dilutions/concentrations should be determined by the end user.
Molecular weight:	74kDa
Cellular localization:	The nucleus
Form:	Lyophilized or Liquid
Concentration:	1mg/ml
immunogen:	KLH conjugated synthetic peptide derived from human MEPCE:181-280/689
Lsotype:	IgG
Purification:	affinity purified by Protein A
Storage Buffer:	0.01M TBS(pH7.4) with 1% BSA, 0.03% Proclin300 and 50% Glycerol.
Storage:	Store at -20 °C for one year. Avoid repeated freeze/thaw cycles. The lyophilized antibody is stable at room temperature for at least one month and for greater than a year when kept at -20°C. When reconstituted in sterile pH 7.4 0.01M PBS or diluent of antibody the antibody is stable for at least two weeks at 2-4 °C.
PubMed:	PubMed
Product Detail:	MEPCE belongs to the methyltransferase superfamily and contains one BIN3 domain. It is an S-adenosyl-L-methionine-dependent methyltransferase that adds a methylphosphate cap at the 5'-end of 7SK snRNA, leading to stabilize it. MEPCE is expressed in chronic myeloid leukemia cells, adrenal gland, brain, cerebellum, kidney,

lung, mammary gland and testis. It is weakly or not expressed in other tissues.

Function:

S-adenosyl-L-methionine-dependent methyltransferase that adds a methylphosphate cap at the 5'-end of 7SK snRNA, leading to stabilize it.

Subunit:

Component of the 7SK snRNP complex at least composed of P-TEFb (composed of CDK9 and CCNT1/cyclin-T1), HEXIM1, HEXIM2, MEPCE/BCDIN3, SART3 proteins and 7SK and U6 snRNAs.

Tissue Specificity:

Expressed in chronic myeloid leukemia cells, adrenal gland, brain, cerebellum, kidney, lung, mammary gland and testis. Weakly or not expressed in other tissues.

Similarity:

Belongs to the methyltransferase superfamily.
Contains 1 Bin3-type SAM domain.

SWISS:

Q7L2J0

Gene ID:

56257

Database links:

[Entrez Gene: 472462](#) Chimpanzee

[Entrez Gene: 489839](#) Dog

[Entrez Gene: 100068939](#) Horse

[Entrez Gene: 56257](#) Human

[Entrez Gene: 231803](#) Mouse

[Entrez Gene: 304361](#) Rat

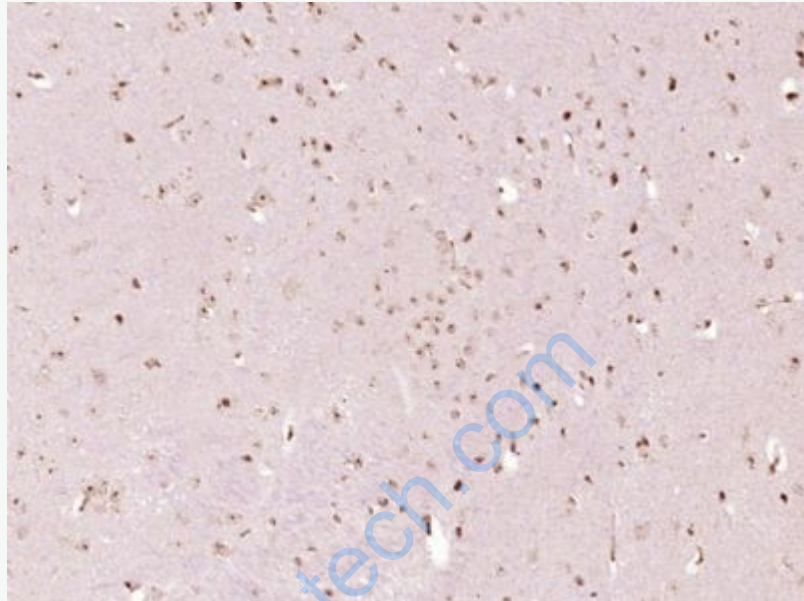
[Omim: 611478](#) Human

[SwissProt: Q7L2J0](#) Human

[SwissProt: Q8K3A9](#) Mouse

Important Note:

This product as supplied is intended for research use only, not for use in human, therapeutic or diagnostic applications.



Picture:

Paraformaldehyde-fixed, paraffin embedded (Mouse brain); Antigen retrieval by boiling in sodium citrate buffer (pH6.0) for 15min; Block endogenous peroxidase by 3% hydrogen peroxide for 20 minutes; Blocking buffer (normal goat serum) at 37°C for 30min; Antibody incubation with (MEPCE) Polyclonal Antibody, Unconjugated (SL18788R) at 1:400 overnight at 4°C, followed by operating according to SP Kit(Rabbit) (sp-0023) instructions and DAB staining.