



Rabbit Anti-PTGEs/Prostaglandin E Synthase antibody

SL1880R

Product Name:	PTGEs/Prostaglandin E Synthase
Chinese Name:	前列腺素E合成酶抗体
Alias:	Glutathione S transferase 1 like 1; MGC10317; MGST IV; MGST1 L1; MGST1 like 1; MGST1-L1; MGST1L1; MGSTIV; Microsomal glutathione S transferase 1 like 1; Microsomal glutathione S-transferase 1-like 1; Microsomal prostaglandin E synthase 1; Microsomal prostaglandin E synthase 1; mPGES 1; MPGES; mPGES-1; p53 induced apoptosis protein 12; p53 induced gene 12; p53 induced gene 12 protein; p53-induced gene 12 protein; PGES; PIG 12; PIG12; PP 102; PP 1294; PP102; PP1294; Prostaglandin E synthase; PTGES; PTGES_HUMAN; TP53I12; Tumor protein p53 inducible protein 12.
Organism Species:	Rabbit
Clonality:	Polyclonal
React Species:	Human,Mouse,Rat,Guinea Pig,
Applications:	WB=1:500-2000ELISA=1:500-1000IHC-P=1:400-800 (Paraffin sections need antigen repair) not yet tested in other applications. optimal dilutions/concentrations should be determined by the end user.
Molecular weight:	17kDa
Cellular localization:	The cell membrane
Form:	Lyophilized or Liquid
Concentration:	1mg/ml
immunogen:	KLH conjugated synthetic peptide derived from human PTGEs:85-152/152
Lsotype:	IgG
Purification:	affinity purified by Protein A
Storage Buffer:	0.01M TBS(pH7.4) with 1% BSA, 0.03% Proclin300 and 50% Glycerol.
Storage:	Store at -20 °C for one year. Avoid repeated freeze/thaw cycles. The lyophilized antibody is stable at room temperature for at least one month and for greater than a year when kept at -20°C. When reconstituted in sterile pH 7.4 0.01M PBS or diluent of

	antibody the antibody is stable for at least two weeks at 2-4 °C.
PubMed:	PubMed
Product Detail:	<p>Prostaglandin E synthase catalyses conversion of COX derived PGH2 to PGE2. It is a member of the MAPEG family. It may contribute to the pathogenesis of collagen induced arthritis and mediate acute pain during inflammatory responses.</p> <p>The protein encoded by this gene is a glutathione-dependent prostaglandin E synthase. The expression of this gene has been shown to be induced by proinflammatory cytokine interleukin 1 beta (IL1B). Its expression can also be induced by tumor suppressor protein TP53, and may be involved in TP53 induced apoptosis. Knockout studies in mice suggest that this gene may contribute to the pathogenesis of collagen-induced arthritis and mediate acute pain during inflammatory responses.</p> <p>Function: Catalyzes the oxidoreduction of prostaglandin endoperoxide H2 (PGH2) to prostaglandin E2 (PGE2).</p> <p>Subunit: Homotrimer.</p> <p>Subcellular Location: Membrane; Multi-pass membrane protein.</p> <p>Similarity: Belongs to the MAPEG family.</p> <p>SWISS: O14684</p> <p>Gene ID: 9536</p> <p>Database links:</p> <p>Entrez Gene: 417193Chicken</p> <p>Entrez Gene: 282019Cow</p> <p>Entrez Gene: 480698Dog</p> <p>Entrez Gene: 9536Human</p> <p>Entrez Gene: 64292Mouse</p> <p>Entrez Gene: 59103Rat</p> <p>Entrez Gene: 544666Zebrafish</p> <p>Omim: 605172Human</p> <p>SwissProt: O14684Human</p>

[SwissProt: Q9JM51](#) Mouse

[Unigene: 146688](#) Human

[Unigene: 28768](#) Mouse

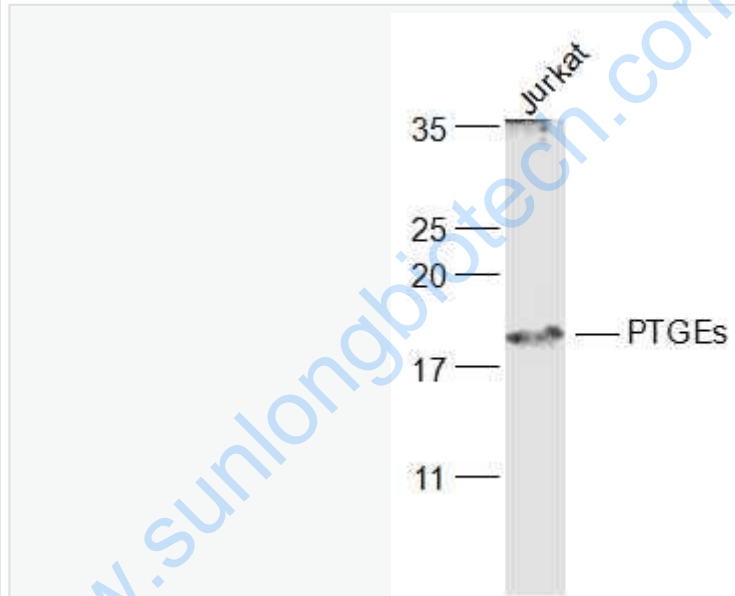
[Unigene: 7730](#) Rat

Important Note:

This product as supplied is intended for research use only, not for use in human, therapeutic or diagnostic applications.

PTGES由白介素-1 β 诱导产生, 可能参与P53诱导的凋亡过程。

Picture:



Sample:

Jurkat(Human) Cell Lysate at 30 ug

Primary: Anti-PTGES (SL1880R) at 1/1000 dilution

Secondary: IRDye800CW Goat Anti-Rabbit IgG at 1/20000 dilution

Predicted band size: 17 kD

Observed band size: 18 kD