



Rabbit Anti-METTL1 antibody

SL18814R

| | |
|-------------------------------|--|
| Product Name: | METTL1 |
| Chinese Name: | 甲基化样蛋白1抗体 |
| Alias: | C12orf1; D1075 like gene product; FLJ95748; Methyltransferase like 1; Methyltransferase like protein 1; Methyltransferase-like protein 1; Mettl1; TRM8; TRMB_HUMAN; TRMT8; tRNA (guanine N(7)) methyltransferase; tRNA (guanine(46)-N(7))-methyltransferase; tRNA (guanine-N(7)-)-methyltransferase; tRNA(m7G46) methyltransferase; tRNA(m7G46)-methyltransferase; YDL201w. |
| Organism Species: | Rabbit |
| Clonality: | Polyclonal |
| React Species: | Human,Mouse,Rat,Pig,Cow,Horse,Rabbit,Sheep, |
| Applications: | WB=1:500-2000IHC-P=1:400-800IHC-F=1:400-800ICC=1:100-500IF=1:100-500 (Paraffin sections need antigen repair) not yet tested in other applications. optimal dilutions/concentrations should be determined by the end user. |
| Molecular weight: | 31kDa |
| Cellular localization: | The nucleus |
| Form: | Lyophilized or Liquid |
| Concentration: | 1mg/ml |
| immunogen: | KLH conjugated synthetic peptide derived from human METTL1:1-100/276 |
| Lsotype: | IgG |
| Purification: | affinity purified by Protein A |
| Storage Buffer: | 0.01M TBS(pH7.4) with 1% BSA, 0.03% Proclin300 and 50% Glycerol. |
| Storage: | Store at -20 °C for one year. Avoid repeated freeze/thaw cycles. The lyophilized antibody is stable at room temperature for at least one month and for greater than a year when kept at -20°C. When reconstituted in sterile pH 7.4 0.01M PBS or diluent of antibody the antibody is stable for at least two weeks at 2-4 °C. |
| PubMed: | PubMed |
| Product Detail: | This gene is similar in sequence to the S. cerevisiae YDL201w gene. The gene product contains a conserved S-adenosylmethionine-binding motif and is inactivated by phosphorylation. Alternative splice variants encoding different protein isoforms have |

been described for this gene. A pseudogene has been identified on chromosome X. [provided by RefSeq, Jul 2008]

Function:

Catalyzes the formation of N(7)-methylguanine at position 46 (m7G46) in tRNA.

Subcellular Location:

Nucleus.

Tissue Specificity:

Ubiquitous.

Post-translational modifications:

Phosphorylation at Ser-27 inactivates its catalytic activity but does not affect the interaction with WDR4.

Similarity:

Belongs to the methyltransferase superfamily. TrmB family.

SWISS:

Q9UBP6

Gene ID:

4234

Database links:

[Entrez Gene: 511197](#) Cow

[Entrez Gene: 4234](#) Human

[Entrez Gene: 17299](#) Mouse

[GenBank: BC000550](#) Human

[Omim: 604466](#) Human

[SwissProt: Q2YDF1](#) Cow

[SwissProt: Q9UBP6](#) Human

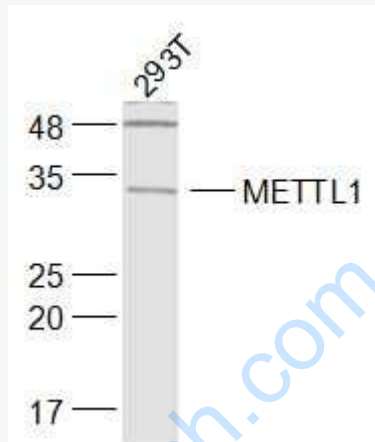
[SwissProt: Q9Z120](#) Mouse

[Unigene: 42957](#) Human

[Unigene: 251593](#) Mouse

Important Note:

This product as supplied is intended for research use only, not for use in human, therapeutic or diagnostic applications.



Picture:

Sample:

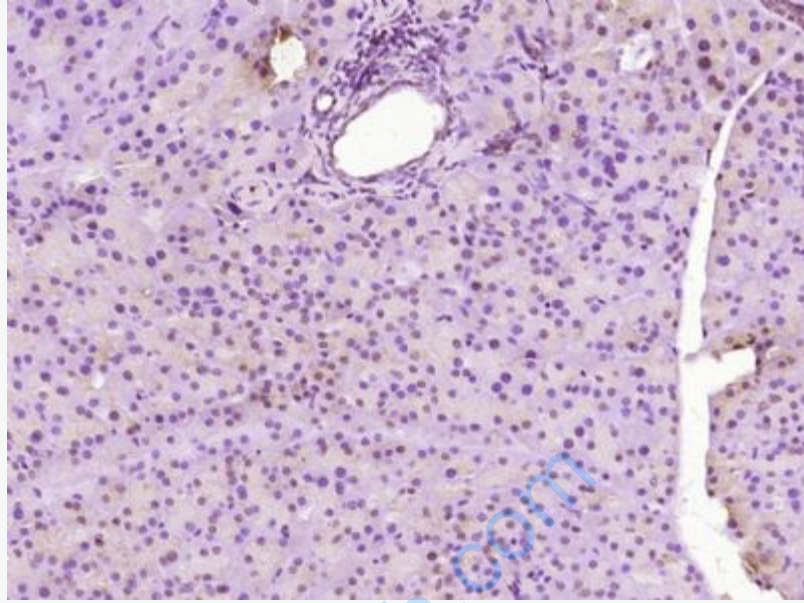
293T(Human) Cell Lysate at 30 ug

Primary: Anti-METTL1 (SL18814R) at 1/1000 dilution

Secondary: IRDye800CW Goat Anti-Rabbit IgG at 1/20000 dilution

Predicted band size: 31 kD

Observed band size: 32 kD



Paraformaldehyde-fixed, paraffin embedded (Mouse pancreas); Antigen retrieval by boiling in sodium citrate buffer (pH6.0) for 15min; Block endogenous peroxidase by 3% hydrogen peroxide for 20 minutes; Blocking buffer (normal goat serum) at 37°C for 30min; Antibody incubation with (METTL1) Polyclonal Antibody, Unconjugated (SL18814R) at 1:400 overnight at 4°C, followed by operating according to SP Kit(Rabbit) (sp-0023) instructions and DAB staining.