



Rabbit Anti-METTL19 antibody

SL18816R

Product Name:	METTL19
Chinese Name:	甲基化样蛋白19抗体
Alias:	C4orf23; FLJ35725; Methyltransferase-like protein 19; Mettl19; Probable tRNA (uracil-O(2)-)-methyltransferase; TRM44; TRM44_HUMAN; tRNA methyltransferase 44 homolog (<i>S. cerevisiae</i>).
Organism Species:	Rabbit
Clonality:	Polyclonal
React Species:	Human,Mouse,Rat,Cow,Horse,
Applications:	WB=1:500-2000IHC-P=1:400-800IHC-F=1:400-800ICC=1:100-500IF=1:100-500 (Paraffin sections need antigen repair) not yet tested in other applications. optimal dilutions/concentrations should be determined by the end user.
Molecular weight:	85kDa
Cellular localization:	cytoplasmic
Form:	Lyophilized or Liquid
Concentration:	1mg/ml
immunogen:	KLH conjugated synthetic peptide derived from human METTL19:1-100/757
Lsotype:	IgG
Purification:	affinity purified by Protein A
Storage Buffer:	0.01M TBS(pH7.4) with 1% BSA, 0.03% Proclin300 and 50% Glycerol.
Storage:	Store at -20 °C for one year. Avoid repeated freeze/thaw cycles. The lyophilized antibody is stable at room temperature for at least one month and for greater than a year when kept at -20°C. When reconstituted in sterile pH 7.4 0.01M PBS or diluent of antibody the antibody is stable for at least two weeks at 2-4 °C.
PubMed:	PubMed
Product Detail:	The protein encoded by this gene is a putative tRNA methyltransferase found in the cytoplasm. Defects in this gene may be a cause of partial epilepsy with pericentral spikes (PEPS), but that has not been proven definitively. [provided by RefSeq, May 2012]

Function:

Probable adenosyl-L-methionine (AdoMet)-dependent tRNA (uracil-O(2))-methyltransferase.

Subcellular Location:

Cytoplasm.

Similarity:

Belongs to the TRM44 family.

SWISS:

Q8IYL2

Gene ID:

152992

Database links:

[Entrez Gene: 152992](#) Human

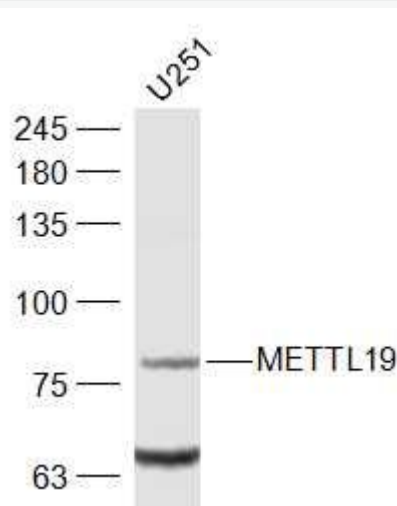
[Omim: 614309](#) Human

[SwissProt: Q8IYL2](#) Human

[Unigene: 566191](#) Human

Important Note:

This product as supplied is intended for research use only, not for use in human, therapeutic or diagnostic applications.

Picture:

Sample:

U251(Human) Cell Lysate at 30 ug

Primary: Anti-METTL19 (SL18816R) at 1/1000 dilution

Secondary: IRDye800CW Goat Anti-Rabbit IgG at 1/20000 dilution

Predicted band size: 85 kD

Observed band size: 85 kD

www.sunlongbiotech.com