



Rabbit Anti-Telomerase Binding Protein, P23 antibody

SL1909R

Product Name:	Telomerase Binding Protein, P23
Chinese Name:	端粒酶Binding proteinP23抗体
Alias:	Telomerase Binding Protein, P23; Prostaglandin E synthase 3; Cytosolic prostaglandin E2 synthase; cPGES; Telomerase-binding protein p23; Hsp90 co-chaperone; Progesterone receptor complex p23; PTGES3; P23; TEBP; TEBP_HUMAN.
Organism Species:	Rabbit
Clonality:	Polyclonal
React Species:	Human,Mouse,Rat,Chicken,Dog,Pig,Cow,Horse,Rabbit,
Applications:	WB=1:500-2000ELISA=1:500-1000IHC-P=1:400-800IHC-F=1:400-800IF=1:100-500 (Paraffin sections need antigen repair) not yet tested in other applications. optimal dilutions/concentrations should be determined by the end user.
Molecular weight:	18kDa
Cellular localization:	cytoplasmic
Form:	Lyophilized or Liquid
Concentration:	1mg/ml
immunogen:	KLH conjugated synthetic peptide derived from human Telomerase Binding Protein, P23:31-130/160
Lsotype:	IgG
Purification:	affinity purified by Protein A
Storage Buffer:	0.01M TBS(pH7.4) with 1% BSA, 0.03% Proclin300 and 50% Glycerol.
Storage:	Store at -20 °C for one year. Avoid repeated freeze/thaw cycles. The lyophilized antibody is stable at room temperature for at least one month and for greater than a year when kept at -20°C. When reconstituted in sterile pH 7.4 0.01M PBS or diluent of antibody the antibody is stable for at least two weeks at 2-4 °C.
PubMed:	PubMed
Product Detail:	Molecular chaperone that localizes to genomic response elements in a hormone-dependent manner and disrupts receptor-mediated transcriptional activation, by

promoting disassembly of transcriptional regulatory complexes. Belongs to the p23/wos2 family.

Function:

Molecular chaperone that localizes to genomic response elements in a hormone-dependent manner and disrupts receptor-mediated transcriptional activation, by promoting disassembly of transcriptional regulatory complexes.

Subunit:

Binds to telomerase and to the progesterone receptor.

Subcellular Location:

Cytoplasm.

Similarity:

Belongs to the p23/wos2 family.
Contains 1 CS domain.

SWISS:

Q15185

Gene ID:

10728

Database links:

[Entrez Gene: 10728](#)Human

[Entrez Gene: 100043508](#)Mouse

[Entrez Gene: 100048119](#)Mouse

[Entrez Gene: 56351](#)Mouse

[Entrez Gene: 362809](#)Rat

[Oimim: 607061](#)Human

[SwissProt: Q15185](#)Human

[SwissProt: Q9R0Q7](#)Mouse

[SwissProt: P83868](#)Rat

[Unigene: 50425](#)Human

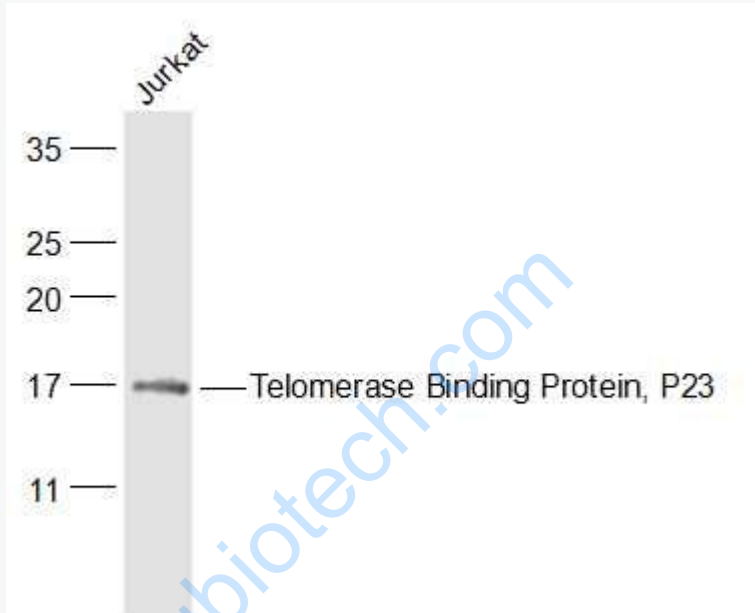
[Unigene: 305816](#)Mouse

[Unigene: 2344](#)Rat

Important Note:

This product as supplied is intended for research use only, not for use in human, therapeutic or diagnostic applications.

Telomerase Binding Protein,P23是一种端粒酶Binding protein。



Picture:

Sample:

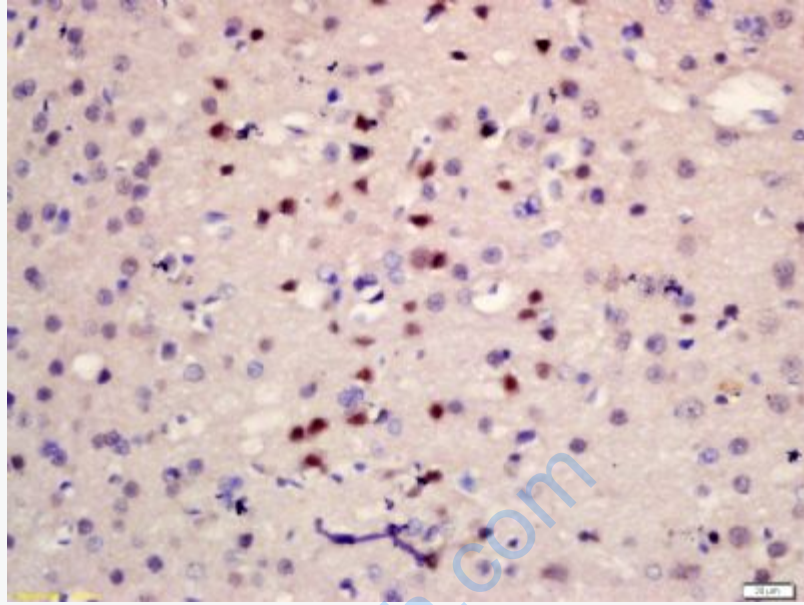
Jurkat(Human) Cell Lysate at 30 ug

Primary: Anti-Telomerase Binding Protein, P23 (SL1909R) at 1/500 dilution

Secondary: IRDye800CW Goat Anti-Rabbit IgG at 1/20000 dilution

Predicted band size: 18 kD

Observed band size: 18 kD



Tissue/cell: rat brain tissue; 4% Paraformaldehyde-fixed and paraffin-embedded;
Antigen retrieval: citrate buffer (0.01M, pH 6.0), Boiling bathing for 15min; Block endogenous peroxidase by 3% Hydrogen peroxide for 30min; Blocking buffer (normal goat serum,C-0005) at 37°C for 20 min;
Incubation: Anti-Telomerase Binding Protein, P23 Antibody,
Unconjugated(SL1909R) 1:200, overnight at 4°C, followed by conjugation to the secondary antibody(SP-0023) and DAB(C-0010) staining