



## Rabbit Anti-Mutarotase antibody

SL19113R

<b>Product Name:</b>	Mutarotase
<b>Chinese Name:</b>	半乳糖变旋酶抗体
<b>Alias:</b>	Aldose 1 epimerase; Aldose 1-epimerase; BLOCK25 protein; galactomutarotase; galactose mutarotase (aldose 1-epimerase); Galactose mutarotase; GALM; GALM_HUMAN.
<b>Organism Species:</b>	Rabbit
<b>Clonality:</b>	Polyclonal
<b>React Species:</b>	Human,Mouse,Rat,Dog,Pig,Cow,Horse,Sheep,
<b>Applications:</b>	WB=1:500-2000IHC-P=1:400-800IHC-F=1:400-800ICC=1:100-500IF=1:100-500 (Paraffin sections need antigen repair) not yet tested in other applications. optimal dilutions/concentrations should be determined by the end user.
<b>Molecular weight:</b>	38kDa
<b>Cellular localization:</b>	cytoplasmic
<b>Form:</b>	Lyophilized or Liquid
<b>Concentration:</b>	1mg/ml
<b>immunogen:</b>	KLH conjugated synthetic peptide derived from human Mutarotase:231-330/342
<b>Lsotype:</b>	IgG
<b>Purification:</b>	affinity purified by Protein A
<b>Storage Buffer:</b>	0.01M TBS(pH7.4) with 1% BSA, 0.03% Proclin300 and 50% Glycerol.
<b>Storage:</b>	Store at -20 °C for one year. Avoid repeated freeze/thaw cycles. The lyophilized antibody is stable at room temperature for at least one month and for greater than a year when kept at -20°C. When reconstituted in sterile pH 7.4 0.01M PBS or diluent of antibody the antibody is stable for at least two weeks at 2-4 °C.
<b>PubMed:</b>	<a href="#">PubMed</a>
<b>Product Detail:</b>	This gene encodes an enzyme that catalyzes the epimerization of hexose sugars such as glucose and galactose. The encoded protein is expressed in the cytoplasm and has a preference for galactose. The encoded protein may be required for normal galactose metabolism by maintaining the equilibrium of alpha and beta anomers of galactose.[provided by RefSeq, Mar 2009]

**Function:**

Mutarotase converts alpha-aldose to the beta-anomer. It is active on D-glucose, L-arabinose, D-xylose, D-galactose, maltose and lactose.

**Subcellular Location:**

Cytoplasm.

**Similarity:**

Belongs to the aldose epimerase family.

**SWISS:**

Q96C23

**Gene ID:**

130589

**Database links:**

[Entrez Gene: 130589](#) Human

[Entrez Gene: 319625](#) Mouse

[Entrez Gene: 313843](#) Rat

[Omid: 608883](#) Human

[SwissProt: Q5EA79](#) Cow

[SwissProt: Q96C23](#) Human

[SwissProt: Q8K157](#) Mouse

[SwissProt: Q66HG4](#) Rat

[Unigene: 435012](#) Human

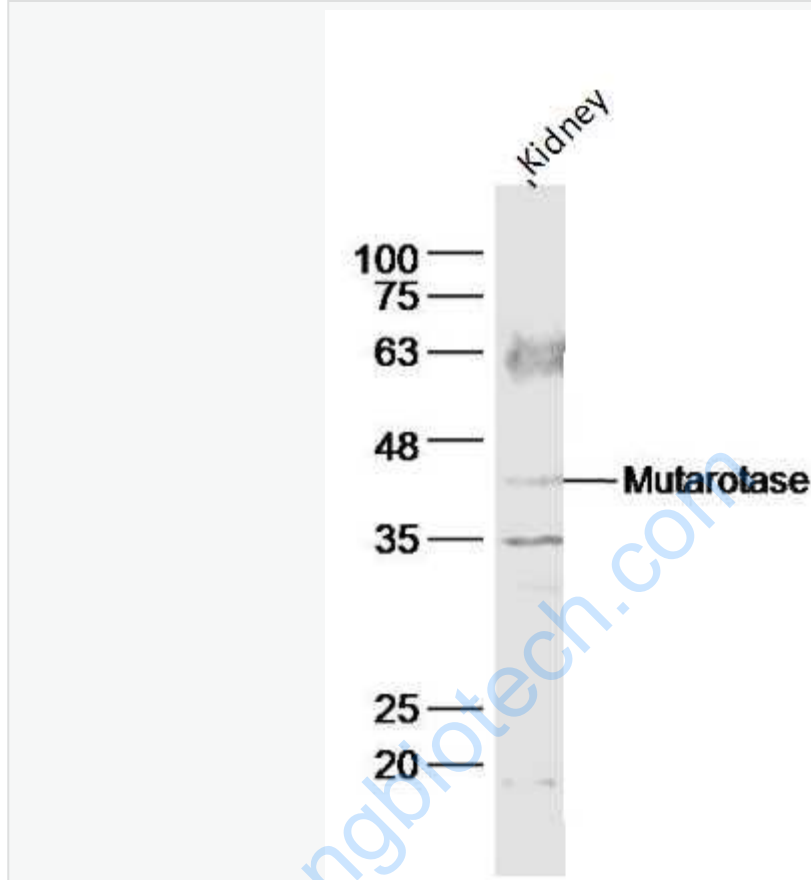
[Unigene: 29098](#) Mouse

[Unigene: 83639](#) Rat

**Important Note:**

This product as supplied is intended for research use only, not for use in human, therapeutic or diagnostic applications.

Picture:



Sample:

Kidney (Mouse) Lysate at 40 ug

Primary: Anti-Mutarotase (SL19113R) at 1/1000 dilution

Secondary: IRDye800CW Goat Anti-Rabbit IgG at 1/20000 dilution

Predicted band size: 38 kD

Observed band size: 38 kD