



Rabbit Anti-MXRA8 antibody

SL19118R

Product Name:	MXRA8
Chinese Name:	基质重塑相关蛋白8抗体
Alias:	Limitrin; Matrix remodelling associated 8; Matrix-remodeling-associated protein8 ; Mxra8; MXRA8_HUMAN.
Organism Species:	Rabbit
Clonality:	Polyclonal
React Species:	Human,Mouse,Rat,Dog,Pig,Cow,Sheep,
Applications:	WB=1:500-2000ELISA=1:500-1000IHC-P=1:400-800IHC-F=1:400-800ICC=1:100-500IF=1:100-500 (Paraffin sections need antigen repair) not yet tested in other applications. optimal dilutions/concentrations should be determined by the end user.
Molecular weight:	47kDa
Cellular localization:	The cell membrane
Form:	Lyophilized or Liquid
Concentration:	1mg/ml
immunogen:	KLH conjugated synthetic peptide derived from human MXRA8:181-280/442<Extracellular>
Lsotype:	IgG
Purification:	affinity purified by Protein A
Storage Buffer:	0.01M TBS(pH7.4) with 1% BSA, 0.03% Proclin300 and 50% Glycerol.
Storage:	Store at -20 °C for one year. Avoid repeated freeze/thaw cycles. The lyophilized antibody is stable at room temperature for at least one month and for greater than a year when kept at -20°C. When reconstituted in sterile pH 7.4 0.01M PBS or diluent of antibody the antibody is stable for at least two weeks at 2-4 °C.
PubMed:	PubMed
Product Detail:	MXRA8 is a 442 amino acid single-pass type I membrane protein that is implicated in the maintenance and maturation of the blood-brain barrier. Containing two Ig-like V-type (immunoglobulin-like) domains, MXRA8 exists as two alternatively spliced isoforms that are encoded by a gene that maps to human chromosome 1p36.33. Human chromosome 1 spans 260 million base pairs, contains over 3,000 genes and comprises

nearly 8% of the human genome. Chromosome 1 houses a large number of disease-associated genes, including those that are involved in familial adenomatous polyposis, Stickler syndrome, Parkinson's disease, Gaucher disease, schizophrenia and Usher syndrome. Aberrations in chromosome 1 are found in a variety of cancers, including head and neck cancer, malignant melanoma and multiple myeloma

Function:

May play a role in the maturation and maintenance of blood-brain barrier.

Subcellular Location:

Membrane.

Similarity:

Contains 2 Ig-like V-type (immunoglobulin-like) domains.

SWISS:

Q9BRK3

Gene ID:

54587

Database links:

[Entrez Gene: 54587](#) Human

[Entrez Gene: 313770](#) Rat

[SwissProt: Q9BRK3](#) Human

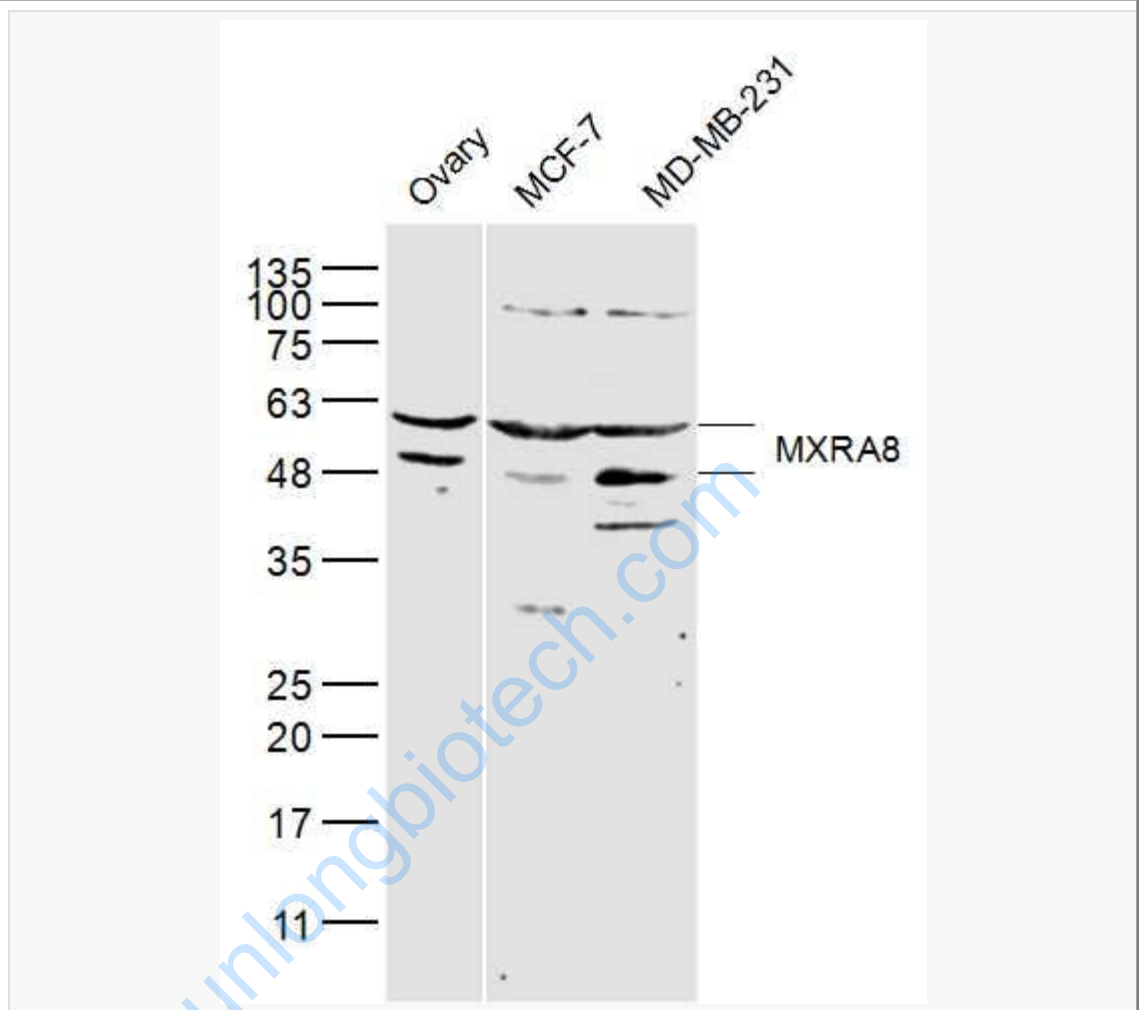
[SwissProt: Q5XI43](#) Rat

[Unigene: 515687](#) Human

Important Note:

This product as supplied is intended for research use only, not for use in human, therapeutic or diagnostic applications.

Picture:



Sample:

Ovary (Mouse) Lysate at 40 ug

MCF-7(Human) Cell Lysate at 30 ug

MD-MB-231(Human) Cell Lysate at 30 ug

Primary: Anti-MXRA8 (SL19118R) at 1/300 dilution

Secondary: IRDye800CW Goat Anti-Rabbit IgG at 1/20000 dilution

Predicted band size: 47 kD

Observed band size: 47 kD