



## Rabbit Anti-TGM3 antibody

SL1911R

<b>Product Name:</b>	TGM3
<b>Chinese Name:</b>	谷氨酰胺转氨酶3抗体
<b>Alias:</b>	Transglutaminase 3; E polypeptide protein glutamine gamma glutamyltransferase; MGC126249; MGC126250; Protein glutamine gamma glutamyltransferase E 27 kDa catalytic chain; Protein glutamine gamma glutamyltransferase E 50 kDa noncatalytic chain; Protein glutamine gamma glutamyltransferase E; TG(E); TGase E; TGE; TGM 3; TGM3; Transglutaminase E; Transglutaminase3; TransglutaminaseE; TGM3 HUMAN.
<b>Organism Species:</b>	Rabbit
<b>Clonality:</b>	Polyclonal
<b>React Species:</b>	Human,Mouse,Rat,Dog,Cow,Horse,Rabbit,
<b>Applications:</b>	ELISA=1:500-1000IHC-P=1:400-800IHC-F=1:400-800IF=1:100-500 (Paraffin sections need antigen repair) not yet tested in other applications. optimal dilutions/concentrations should be determined by the end user.
<b>Molecular weight:</b>	25/76kDa
<b>Cellular localization:</b>	cytoplasmic
<b>Form:</b>	Lyophilized or Liquid
<b>Concentration:</b>	1mg/ml
<b>immunogen:</b>	KLH conjugated synthetic peptide derived from human TGM3:601-693/693
<b>Lsotype:</b>	IgG
<b>Purification:</b>	affinity purified by Protein A
<b>Storage Buffer:</b>	0.01M TBS(pH7.4) with 1% BSA, 0.03% Proclin300 and 50% Glycerol.
<b>Storage:</b>	Store at -20 °C for one year. Avoid repeated freeze/thaw cycles. The lyophilized antibody is stable at room temperature for at least one month and for greater than a year when kept at -20°C. When reconstituted in sterile pH 7.4 0.01M PBS or diluent of antibody the antibody is stable for at least two weeks at 2-4 °C.
<b>PubMed:</b>	<a href="#">PubMed</a>
<b>Product Detail:</b>	Transglutaminases are enzymes that catalyze the crosslinking of proteins by epsilon gamma glutamyl lysine isopeptide bonds. While the primary structure of transglutaminases is not conserved, they all have the same amino acid sequence at their

active sites and their activity is calcium dependent. Transglutaminase 3 consists of two polypeptide chains activated from a single precursor protein by proteolysis. Transglutaminase 3 is involved the later stages of cell envelope formation in the epidermis and hair follicle.

**Subunit:**

Consists of two polypeptide chains, which are synthesized as a precursor form of a single polypeptide.

**Similarity:**

Belongs to the transglutaminase superfamily. Transglutaminase family.

**SWISS:**

Q08188

**Gene ID:**

7053

**Database links:**

[Entrez Gene: 7053](#)Human

[Entrez Gene: 21818](#)Mouse

[Olim: 600238](#)Human

[SwissProt: Q08188](#)Human

[SwissProt: Q08189](#)Mouse

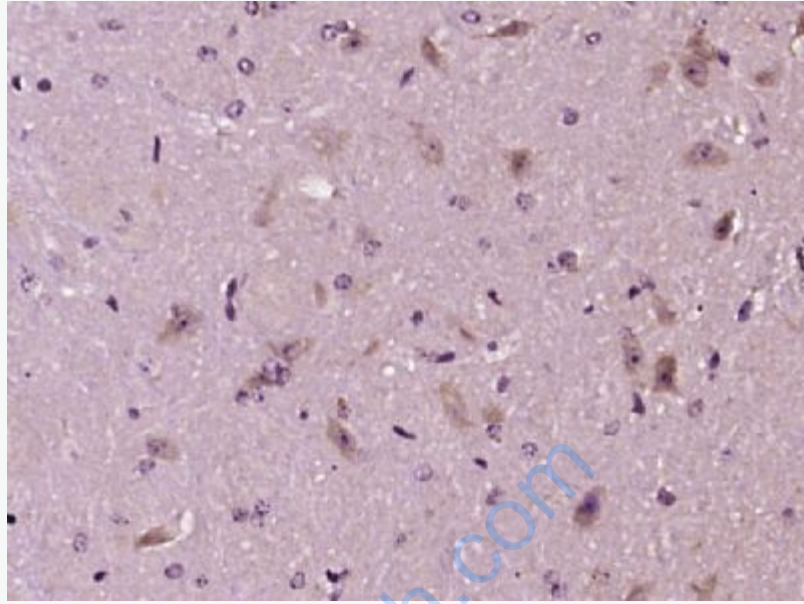
[Unigene: 2022](#)Human

[Unigene: 2961](#)Mouse

**Important Note:**

This product as supplied is intended for research use only, not for use in human, therapeutic or diagnostic applications.

TGM3是转谷氨酰胺酶家族的主要成员之一，是一种钙离子依赖性蛋白酶，主要功能是参与角质化细胞的终末分化过程。



**Picture:**

Paraformaldehyde-fixed, paraffin embedded (mouse brain tissue); Antigen retrieval by boiling in sodium citrate buffer (pH6.0) for 15min; Block endogenous peroxidase by 3% hydrogen peroxide for 20 minutes; Blocking buffer (normal goat serum) at 37°C for 30min; Antibody incubation with (TGM3) Polyclonal Antibody, Unconjugated (SL1911R) at 1:400 overnight at 4°C, followed by operating according to SP Kit(Rabbit) (sp-0023) instructions and DAB staining.