



Rabbit Anti-TIPRL antibody

SL19121R

Product Name:	TIPRL
Chinese Name:	TIP41样蛋白抗体
Alias:	1810011K17Rik; dJ69E11.3; MGC3794; Putative MAPK activating protein PM10; Putative MAPK-activating protein PM10; RP1-69E11.1; Tip; TIP41; TIP41-like protein; tiprl; TIPRL_HUMAN; TOR Signaling Pathway Regulator like; Type 2A-interacting protein.
Organism Species:	Rabbit
Clonality:	Polyclonal
React Species:	Human,Mouse,Rat,Dog,Pig,Cow,Horse,Rabbit,Guinea Pig,
Applications:	WB=1:500-2000ELISA=1:500-1000IHC-P=1:400-800IHC-F=1:400-800ICC=1:100-500IF=1:100-500 (Paraffin sections need antigen repair) not yet tested in other applications. optimal dilutions/concentrations should be determined by the end user.
Molecular weight:	31kDa
Cellular localization:	cytoplasmic
Form:	Lyophilized or Liquid
Concentration:	1mg/ml
immunogen:	KLH conjugated synthetic peptide derived from human TIPRL:51-150/272
Lsotype:	IgG
Purification:	affinity purified by Protein A
Storage Buffer:	Preservative: 15mM Sodium Azide, Constituents: 1% BSA, 0.01M PBS, pH 7.4
Storage:	Store at -20 °C for one year. Avoid repeated freeze/thaw cycles. The lyophilized antibody is stable at room temperature for at least one month and for greater than a year when kept at -20°C. When reconstituted in sterile pH 7.4 0.01M PBS or diluent of antibody the antibody is stable for at least two weeks at 2-4 °C.
PubMed:	PubMed
Product Detail:	TIPRL is an inhibitory regulator of protein phosphatase-2A (PP2A) (see PPP2CA; MIM 176915), PP4 (see PPP4C; MIM 602035), and PP6 (see PPP6C; MIM 612725) (McConnell et al., 2007 [PubMed 17384681]).[supplied by OMIM, Nov 2010]

Function:

May be a allosteric regulator of serine/threonine-protein phosphatase 2A (PP2A). Isoform 1 inhibits catalytic activity of the PP2A(D) core complex in vitro. The PP2A(C):TIPRL complex does not show phosphatase activity. May play a role in the regulation of ATM/ATR signaling pathway controlling DNA replication and repair.

Subunit:

Isoform 1 interacts with PPP2CA. Isoform 2 does not interact with PPP2CA. Interacts with PPP2CB, PPP4C and PPP6C. Interacts with IGBP1; the interaction is dependent on PPP2CA. Associates with a protein phosphatase 2A PP2A(C):alpha-4 complex.

Subcellular Location:

Cytoplasm.

Similarity:

Belongs to the TIP41 family.

SWISS:

O75663

Gene ID:

261726

Database links:

[Entrez Gene: 261726](#) Human

[Entrez Gene: 226591](#) Mouse

[Entrez Gene: 360869](#) Rat

[Omim: 611807](#) Human

[SwissProt: O75663](#) Human

[SwissProt: Q8BH58](#) Mouse

[SwissProt: A2VCX1](#) Rat

[Unigene: 209431](#) Human

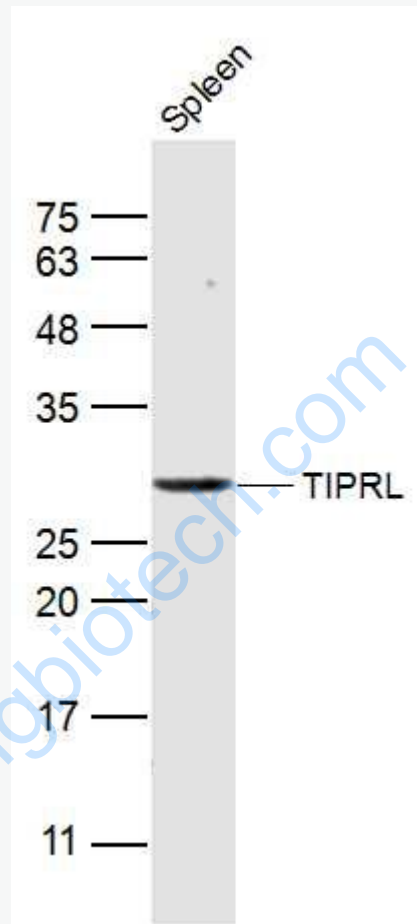
[Unigene: 21520](#) Mouse

[Unigene: 56867](#) Rat

Important Note:

This product as supplied is intended for research use only, not for use in human, therapeutic or diagnostic applications.

Picture:



Sample:

Spleen (Mouse) Lysate at 40 ug

Primary: Anti-TIPRL (SL19121R) at 1/300 dilution

Secondary: IRDye800CW Goat Anti-Rabbit IgG at 1/20000 dilution

Predicted band size: 31 kD

Observed band size: 31 kD