



Rabbit Anti-ZFP30 antibody

SL19124R

Product Name:	ZFP30
Chinese Name:	Zinc finger protein30抗体
Alias:	KIAA0961; ZFP 30; Zfp-30; ZFP30; ZFP30_HUMAN; Zinc finger protein 30 homolog; Zinc finger protein 745; ZNF745.
Organism Species:	Rabbit
Clonality:	Polyclonal
React Species:	Human,
Applications:	WB=1:500-2000ELISA=1:500-1000IHC-P=1:400-800IHC-F=1:400-800ICC=1:100-500IF=1:100-500 (Paraffin sections need antigen repair) not yet tested in other applications. optimal dilutions/concentrations should be determined by the end user.
Molecular weight:	62kDa
Cellular localization:	The nucleus
Form:	Lyophilized or Liquid
Concentration:	1mg/ml
immunogen:	KLH conjugated synthetic peptide derived from human ZFP30:101-200/519
Lsotype:	IgG
Purification:	affinity purified by Protein A
Storage Buffer:	0.01M TBS(pH7.4) with 1% BSA, 0.03% Proclin300 and 50% Glycerol.
Storage:	Store at -20 °C for one year. Avoid repeated freeze/thaw cycles. The lyophilized antibody is stable at room temperature for at least one month and for greater than a year when kept at -20°C. When reconstituted in sterile pH 7.4 0.01M PBS or diluent of antibody the antibody is stable for at least two weeks at 2-4 °C.
PubMed:	PubMed
Product Detail:	ZFP30 is a 519 amino acid protein that localizes to the nucleus and is composed of thirteen C2H2-type zinc fingers and one KRAB domain. ZFP30 is encoded by a gene located on human chromosome 19, which consists of over 63 million bases, houses approximately 1,400 genes and is recognized for having the greatest gene density of the human chromosomes. It is the genetic home for a number of immunoglobulin (Ig) superfamily members, including the killer cell and leukocyte Ig-like receptors, a number

of ICAMs, the CEACAM and PSG families, and Fc receptors (FcRs).

Function:

May be involved in transcriptional regulation.

Subcellular Location:

Nucleus.

Similarity:

Belongs to the krueppel C2H2-type zinc-finger protein family.

Contains 13 C2H2-type zinc fingers.

Contains 1 KRAB domain.

SWISS:

Q9Y2G7

Gene ID:

22835

Database links:

[Entrez Gene: 22835](#)Human

[Entrez Gene: 22693](#)Mouse

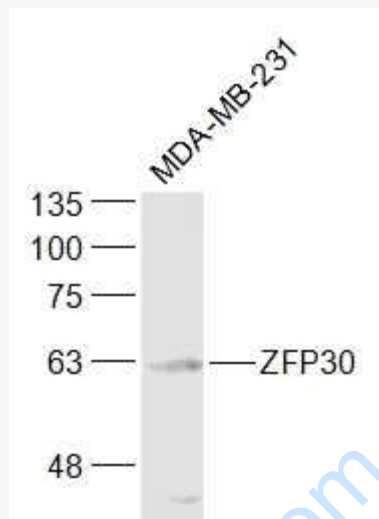
[SwissProt: Q9Y2G7](#)Human

[SwissProt: Q60585](#)Mouse

[Unigene: 716719](#)Human

Important Note:

This product as supplied is intended for research use only, not for use in human, therapeutic or diagnostic applications.



Sample:

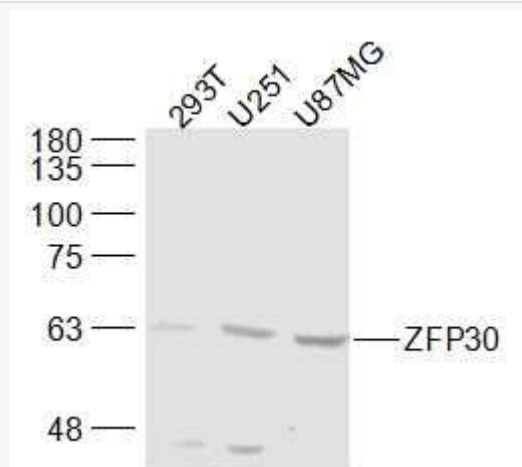
MDA-MB-231(Human) Cell Lysate at 30 ug

Primary: Anti-ZFP30 (SL19124R) at 1/1000 dilution

Secondary: IRDye800CW Goat Anti-Rabbit IgG at 1/20000 dilution

Predicted band size: 62 kD

Observed band size: 62 kD



Sample:

293T(Human) Cell Lysate at 30 ug

Picture:

U251(Human) Cell Lysate at 30 ug

U87MG(Human) Cell Lysate at 30 ug

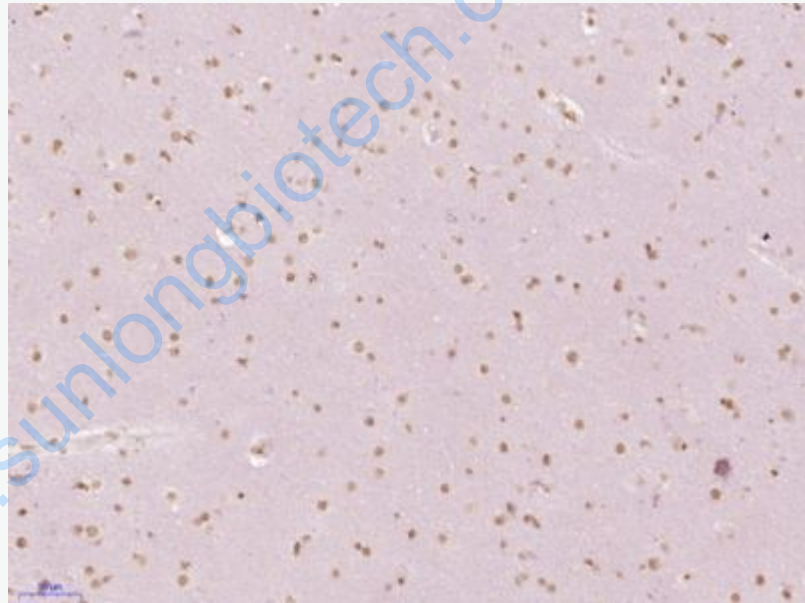
MDA-MB-231(Human) Cell Lysate at 30 ug

Primary: Anti-ZFP30 (SL19124R) at 1/1000 dilution

Secondary: IRDye800CW Goat Anti-Rabbit IgG at 1/20000 dilution

Predicted band size: 62 kD

Observed band size: 62 kD



Paraformaldehyde-fixed, paraffin embedded (Human brain glioma); Antigen retrieval by boiling in sodium citrate buffer (pH6.0) for 15min; Block endogenous peroxidase by 3% hydrogen peroxide for 20 minutes; Blocking buffer (normal goat serum) at 37°C for 30min; Antibody incubation with (ZFP30) Polyclonal Antibody, Unconjugated (SL19124R) at 1:400 overnight at 4°C, followed by operating according to SP Kit(Rabbit) (sp-0023) instructions and DAB staining.

