



Rabbit Anti-MMP8 antibody

SL1913R

Product Name:	MMP8
Chinese Name:	基质金属蛋白酶-8/胶原酶2抗体
Alias:	Matriysin/matrix metalloproteinases-8; CLG 1; CLG1; Collagenase II; Collagenase 2; Collagenase neutrophil; HNC; Matrix metalloprotease 8; MMP8; MMP 8; MMP-8; Neutrophil collagenase; PMNL CL; PMNL collagenase; PMNLCL; neutrophil collagenase preproprotein; MMP8_HUMAN; Neutrophil collagenase;Matrix metalloproteinase-8; PMNL-CL.
文献引用 PubMed :	<p>Specific References(2)SL1913R has been referenced in 2 publications.</p> <p>[IF=2.35]Zhang, Chao-ying, et al. "Hydrogen sulfide suppresses the expression of MMP-8, MMP-13, and TIMP-1 in left ventricles of rats with cardiac volume overload." Acta Pharmacologica Sinica (2013).Rat. PubMed:23974514</p> <p>[IF=3.27]Oralova, V., et al. "Osteogenic Potential of the Transcription Factor c-MYB." Calcified Tissue International: 1-12.WB;Mouse. PubMed:28012106</p>
Organism Species:	Rabbit
Clonality:	Polyclonal
React Species:	Human,Mouse,Rat,
Applications:	WB=1:500-2000ELISA=1:500-1000IHC-F=1:400-800Flow-Cyt=1ug/testIF=1:100-500 (Paraffin sections need antigen repair) not yet tested in other applications. optimal dilutions/concentrations should be determined by the end user.
Molecular weight:	38kDa
Cellular localization:	cytoplasmicExtracellular matrixSecretory protein
Form:	Lyophilized or Liquid
Concentration:	1mg/ml

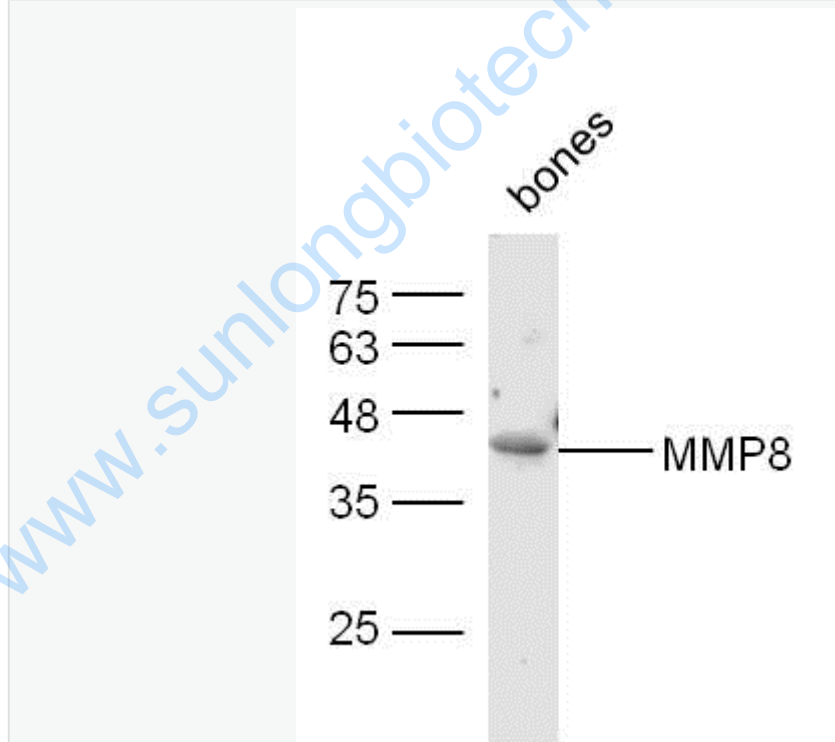
immunogen:	KLH conjugated synthetic peptide derived from human MMP8:241-340/467
Lsotype:	IgG
Purification:	affinity purified by Protein A
Storage Buffer:	0.01M TBS(pH7.4) with 1% BSA, 0.03% Proclin300 and 50% Glycerol.
Storage:	Store at -20 °C for one year. Avoid repeated freeze/thaw cycles. The lyophilized antibody is stable at room temperature for at least one month and for greater than a year when kept at -20°C. When reconstituted in sterile pH 7.4 0.01M PBS or diluent of antibody the antibody is stable for at least two weeks at 2-4 °C.
PubMed:	PubMed
Product Detail:	<p>Proteins of the matrix metalloproteinase (MMP) family are involved in the breakdown of extracellular matrix in normal physiological processes, such as embryonic development, reproduction, and tissue remodeling, as well as in disease processes, such as arthritis and metastasis. Most MMP's are secreted as inactive proproteins which are activated when cleaved by extracellular proteinases. However, the enzyme encoded by this gene is stored in secondary granules within neutrophils and is activated by autolytic cleavage. Its function is degradation of type I, II and III collagens. The gene is part of a cluster of MMP genes which localize to chromosome 11q22.3. [provided by RefSeq, Jul 2008]</p> <p>Function: Can degrade fibrillar type I, II, and III collagens.</p> <p>Subcellular Location: Cytoplasmic granule. Secreted, extracellular space, extracellular matrix (Probable). Note=Stored in intracellular granules.</p> <p>Tissue Specificity: Neutrophils.</p> <p>Similarity: Belongs to the peptidase M10A family. Contains 4 hemopexin-like domains.</p> <p>SWISS: P22894</p> <p>Gene ID: 4317</p> <p>Database links: Entrez Gene: 4317Human Entrez Gene: 17394Mouse Entrez Gene: 63849Rat</p>

[Omim: 120355](#)Human
[SwissProt: P22894](#)Human
[SwissProt: O70138](#)Mouse
[SwissProt: O88766](#)Rat
[Unigene: 161839](#)Human
[Unigene: 16415](#)Mouse
[Unigene: 44474](#)Rat

Important Note:

This product as supplied is intended for research use only, not for use in human, therapeutic or diagnostic applications.

Picture:



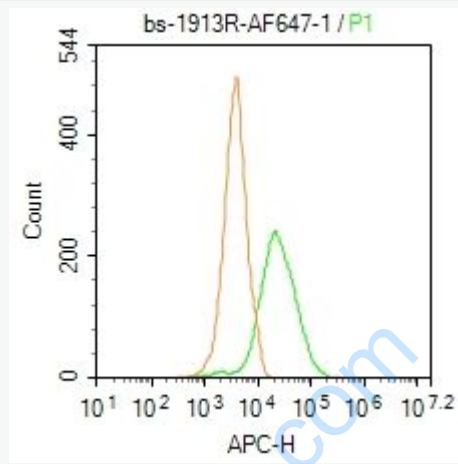
Sample: Bone (Mouse) Lysate at 30 ug

Primary: Anti-MMP8 (SL1913R) at 1/300 dilution

Secondary: IRDye800CW Goat Anti-Mouse IgG at 1/10000 dilution

Predicted band size: 38 kD

Observed band size: 38 kD



Blank control: Mouse spleen.

Primary Antibody (green line): Rabbit Anti-MMP8 /AF647 Conjugated antibody (SL1913R)

Dilution: 0.2 μ g /10⁶ cells;

Isotype Control Antibody (orange line): Rabbit IgG-AF647 .

Protocol

The cells were fixed with 4% PFA (10min at room temperature) and then permeabilized with 0.1% PBST for 20 min at -20°C. The cells were then incubated in 5% BSA to block non-specific protein-protein interactions for 30 min at room temperature. The cells were stained with Primary Antibody for 30 min at room temperature. Acquisition of 20,000 events was performed.