



Rabbit Anti-Myeloid Marker antibody

SL19143R

Product Name:	Myeloid Marker
Chinese Name:	粒Cell differentiation相关MakerMYADM抗体
Alias:	MYADM; MYADM_HUMAN; myeloid associated differentiation marker; Myeloid upregulated protein; Myeloid-associated differentiation marker; Protein SB135; SB135.
Organism Species:	Rabbit
Clonality:	Polyclonal
React Species:	Human,Pig,Horse,Rabbit,
Applications:	WB=1:500-2000ELISA=1:500-1000IHC-P=1:400-800IHC-F=1:400-800ICC=1:100-500IF=1:100-500 (Paraffin sections need antigen repair) not yet tested in other applications. optimal dilutions/concentrations should be determined by the end user.
Molecular weight:	36kDa
Cellular localization:	The cell membrane
Form:	Lyophilized or Liquid
Concentration:	1mg/ml
immunogen:	KLH conjugated synthetic peptide derived from human Myeloid Marker:51-150/322
Lsotype:	IgG
Purification:	affinity purified by Protein A
Storage Buffer:	0.01M TBS(pH7.4) with 1% BSA, 0.03% Proclin300 and 50% Glycerol.
Storage:	Store at -20 °C for one year. Avoid repeated freeze/thaw cycles. The lyophilized antibody is stable at room temperature for at least one month and for greater than a year when kept at -20°C. When reconstituted in sterile pH 7.4 0.01M PBS or diluent of antibody the antibody is stable for at least two weeks at 2-4 °C.
PubMed:	PubMed
Product Detail:	Myeloid cells originate in the bone marrow during hematopoiesis and encompass all hemopoietic cells except the lymphoid cells (T cells, B cells, NK cells and dendritic cells). Vascular endothelial cells can differentiate from common myeloid progenitors, and these cells that form the bone marrow-derived myeloid lineage express markers such as CD31, von Willebrand factor and Tie2. Other myeloid markers may be used to track certain diseases, such as Kawasaki disease, a self-limited vasculitis that affects many

organs, including the skin and mucous membranes, lymph nodes, blood vessel walls and heart.

Subcellular Location:

Membrane.

Tissue Specificity:

Widely expressed. Not detected in thymus.

Similarity:

Belongs to the MAL family.

Contains 2 MARVEL domains.

SWISS:

Q96S97

Gene ID:

91663

Database links:

[Entrez Gene: 91663](#) Human

[Entrez Gene: 506295](#) Cow

[Entrez Gene: 611521](#) Dog

[Entrez Gene: 50918](#) Mouse

[Omim: 609959](#) Human

[SwissProt: Q96S97](#) Human

[SwissProt: O35682](#) Mouse

[SwissProt: Q0VE46](#) Mouse

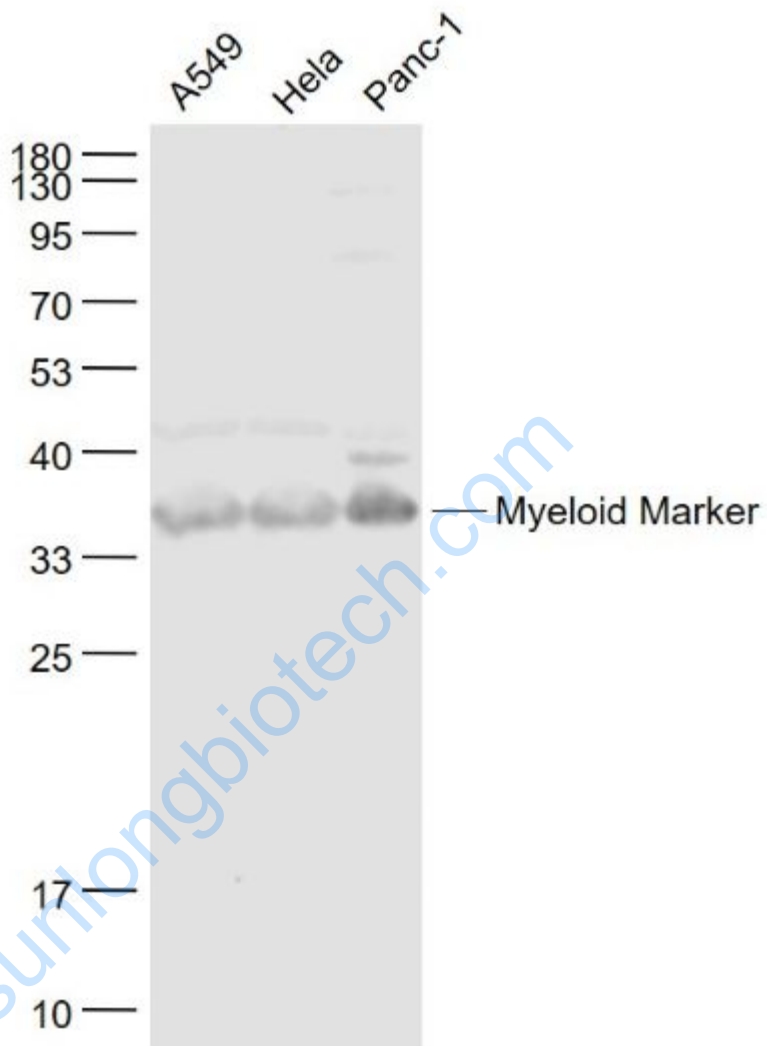
[Unigene: 380906](#) Human

[Unigene: 29874](#) Mouse

Important Note:

This product as supplied is intended for research use only, not for use in human, therapeutic or diagnostic applications.

Picture:



Sample:

A549(Human) Cell Lysate at 30 ug

HeLa(Human) Cell Lysate at 30 ug

Panc-1(Human) Cell Lysate at 30 ug

Primary: Anti- Myeloid Marker (SL19143R) at 1/300 dilution

Secondary: IRDye800CW Goat Anti-Rabbit IgG at 1/20000 dilution

Predicted band size: 36 kD

	Observed band size: 36 kD
--	---------------------------

www.sunlongbiotech.com