



Rabbit Anti-NECAB3 antibody

SL19220R

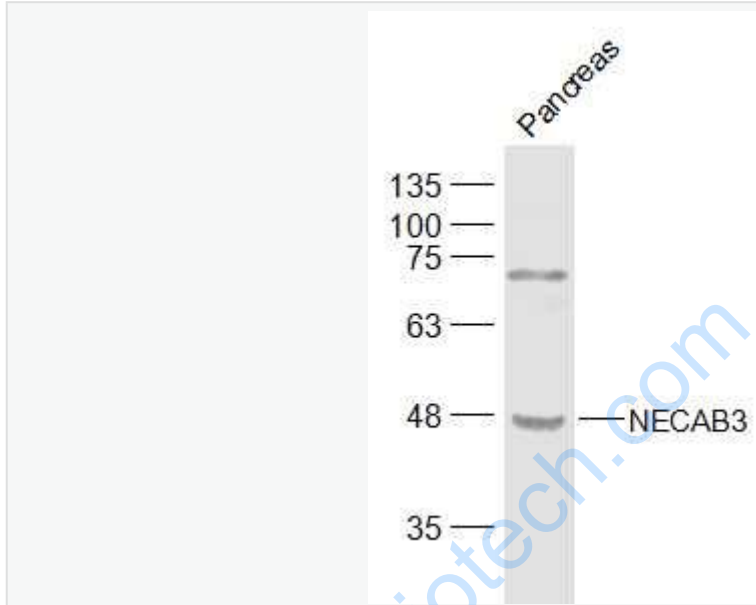
Product Name:	NECAB3
Chinese Name:	神经细胞钙Binding protein抗体
Alias:	Neuronal calcium-binding protein; amyloid beta (A4) precursor protein binding, family A, member 2 binding protein; Amyloid beta A4 protein binding family A member 2 binding protein; Amyloid beta A4 protein-binding family A member 2-binding protein; APBA2BP; dJ63M2.4; dJ63M2.5; EFCBP3; N terminal EF hand calcium binding protein 3; N-terminal EF-hand calcium-binding protein 3; NECA3_HUMAN; NECAB3; NECAB3; Nek2 interacting protein 1; Nek2-interacting protein 1; Neuronal calcium binding protein 3; Neuronal calcium-binding protein 3; NIP1; STIP3; Synaptotagmin interacting protein 2; SYTIP2; X11L binding protein 51; X11L-binding protein 51; XB51.
Organism Species:	Rabbit
Clonality:	Polyclonal
React Species:	Human,Mouse,Rat,Cow,Sheep,
Applications:	WB=1:500-2000ELISA=1:500-1000IHC-P=1:400-800IHC-F=1:400-800ICC=1:100-500IF=1:100-500 (Paraffin sections need antigen repair) not yet tested in other applications. optimal dilutions/concentrations should be determined by the end user.
Molecular weight:	44kDa
Cellular localization:	cytoplasmic
Form:	Lyophilized or Liquid
Concentration:	1mg/ml
immunogen:	KLH conjugated synthetic peptide derived from human NECAB3:301-396/396
Lsotype:	IgG
Purification:	affinity purified by Protein A
Storage Buffer:	0.01M TBS(pH7.4) with 1% BSA, 0.03% Proclin300 and 50% Glycerol.
Storage:	Store at -20 °C for one year. Avoid repeated freeze/thaw cycles. The lyophilized antibody is stable at room temperature for at least one month and for greater than a year when kept at -20°C. When reconstituted in sterile pH 7.4 0.01M PBS or diluent of antibody the antibody is stable for at least two weeks at 2-4 °C.

PubMed:	PubMed
Product Detail:	<p>The protein encoded by this gene interacts with the amino-terminal domain of the neuron-specific X11-like protein (X11L), inhibits the association of X11L with amyloid precursor protein through a non-competitive mechanism, and abolishes the suppression of beta-amyloid production by X11L. This protein, together with X11L, may play an important role in the regulatory system of amyloid precursor protein metabolism and beta-amyloid generation. The protein is phosphorylated by NIMA-related expressed kinase 2, and localizes to the Golgi apparatus. Multiple transcript variants encoding different isoforms have been found for this gene. [provided by RefSeq, Jul 2008]</p> <p>Function: Inhibits the interaction of APBA2 with beta-amyloid precursor protein (APP), and hence allows formation of beta-amyloid.</p> <p>Subcellular Location: Golgi apparatus.</p> <p>Tissue Specificity: Strongly expressed in heart and skeletal muscle, moderately in brain and pancreas.</p> <p>Post-translational modifications: Phosphorylated by NEK2.</p> <p>Similarity: Contains 1 ABM domain. Contains 1 EF-hand domain.</p> <p>SWISS: Q96P71</p> <p>Gene ID: 63941</p> <p>Database links:</p> <p>Entrez Gene: 63941 Human</p> <p>Entrez Gene: 311562 Rat</p> <p>Omim: 612478 Human</p> <p>SwissProt: Q96P71 Human</p> <p>Unigene: 516986 Human</p>

Important Note:

This product as supplied is intended for research use only, not for use in human, therapeutic or diagnostic applications.

Picture:



Sample:

Pancreas (Mouse) Lysate at 40 ug

Primary: Anti-NECAB3 (SL19220R) at 1/500 dilution

Secondary: IRDye800CW Goat Anti-Rabbit IgG at 1/20000 dilution

Predicted band size: 44 kD

Observed band size: 44 kD