



Rabbit Anti-NPEPL1 antibody

SL19327R

Product Name:	NPEPL1
Chinese Name:	氨基酶样蛋白1抗体
Alias:	Aminopeptidase like 1; Aminopeptidase-like 1; bA261P9.2; KIAA1974; NPEPL 1; NPEPL1; PEPL1_HUMAN; Probable aminopeptidase NPEPL1.
Organism Species:	Rabbit
Clonality:	Polyclonal
React Species:	Human,Mouse,Rat,Dog,Cow,56
Applications:	WB=1:500-2000ELISA=1:500-1000IHC-P=1:400-800IHC-F=1:400-800ICC=1:100-500IF=1:100-500 (Paraffin sections need antigen repair) not yet tested in other applications. optimal dilutions/concentrations should be determined by the end user.
Molecular weight:	55kDa
Cellular localization:	The nucleocytoplasmic
Form:	Lyophilized or Liquid
Concentration:	1mg/ml
immunogen:	KLH conjugated synthetic peptide derived from human NPEPL1:371-470/494
Lsotype:	IgG
Purification:	affinity purified by Protein A
Storage Buffer:	0.01M TBS(pH7.4) with 1% BSA, 0.03% Proclin300 and 50% Glycerol.
Storage:	Store at -20 °C for one year. Avoid repeated freeze/thaw cycles. The lyophilized antibody is stable at room temperature for at least one month and for greater than a year when kept at -20°C. When reconstituted in sterile pH 7.4 0.01M PBS or diluent of antibody the antibody is stable for at least two weeks at 2-4 °C.
PubMed:	PubMed
Product Detail:	Aminopeptidases are widely distributed in eukaryotes and prokaryotes. These enzymes catalyze the removal of amino acids from the N-termini of proteins or peptide substrates. Aminopeptidases are involved in regulating hormone levels and are essential for digestive and intracellular protein metabolism. NPEPL1, also referred to as aminopeptidase-like 1, is a 523 amino acid protein that belongs to the peptidase M17 family and is ubiquitously expressed. NPEPL1 may be involved in the processing,

catabolism and degradation of intracellular proteins by catalyzing the removal of unsubstituted N-terminal amino acids from various peptides. NPEPL1 contains several zinc binding sites and is expressed as three isoforms due to alternative splicing events.

Function:

Probably catalyzes the removal of unsubstituted N-terminal amino acids from various peptides.

Tissue Specificity:

Ubiquitously expressed.

Similarity:

Belongs to the peptidase M17 family.

SWISS:

Q9HAU8

Gene ID:

79716

Database links:

[Entrez Gene: 79716](#) Human

[Entrez Gene: 507384](#) Cow

[Entrez Gene: 228961](#) Mouse

[Entrez Gene: 100144530](#) Pig

[Entrez Gene: 311671](#) Rat

[Entrez Gene: 734466](#) Xenopus laevis

[Entrez Gene: 613087](#) Xenopus tropicalis

[Entrez Gene: 550383](#) Zebrafish

[SwissProt: Q8NDH3](#) Human

[SwissProt: Q6NSR8](#) Mouse

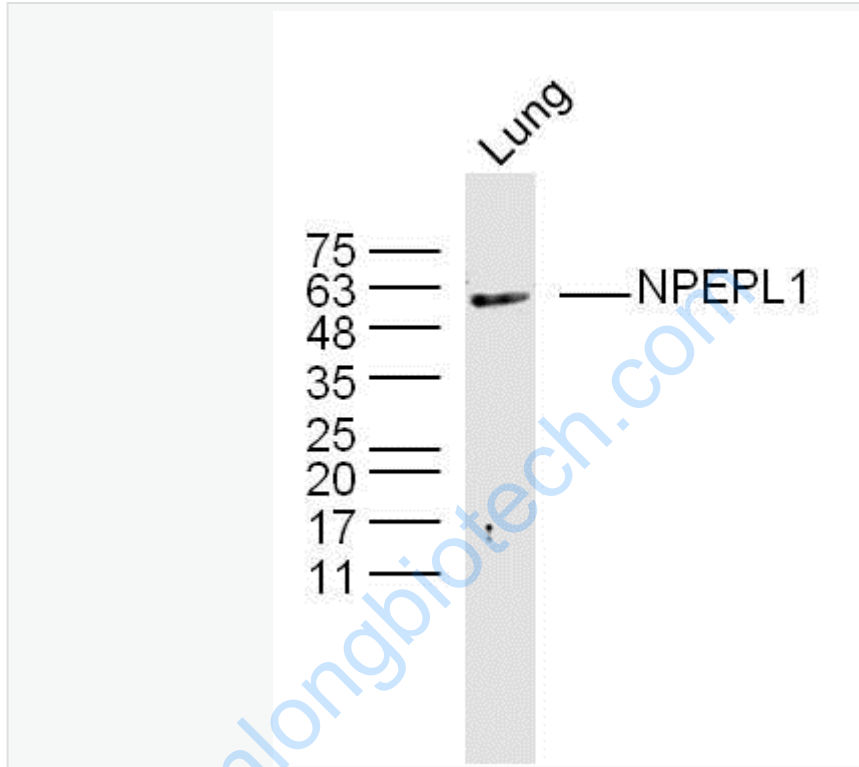
[Unigene: 654868](#) Human

[Unigene: 295629](#) Mouse

Important Note:

This product as supplied is intended for research use only, not for use in human, therapeutic or diagnostic applications.

Picture:



Sample: lung (mouse) Lysate at 40 ug

Primary: Anti-NPEPL1(SL19327R) at 1/300 dilution

Secondary: IRDye800CW Goat Anti-Rabbit IgG at 1/20000 dilution

Predicted band size: 55 kD

Observed band size: 55 kD