



## Rabbit Anti-PRSS35 antibody

SL19440R

<b>Product Name:</b>	PRSS35
<b>Chinese Name:</b>	丝氨酸蛋白酶35抗体
<b>Alias:</b>	6030424L22Rik; C6orf158; Inactive serine protease 35; MGC46520; P3D9; protease, serine, 35; PRSS 35.
<b>Organism Species:</b>	Rabbit
<b>Clonality:</b>	Polyclonal
<b>React Species:</b>	Human,Mouse,Rat,
<b>Applications:</b>	IHC-P=1:400-800IHC-F=1:400-800ICC=1:100-500IF=1:100-500 (Paraffin sections need antigen repair) not yet tested in other applications. optimal dilutions/concentrations should be determined by the end user.
<b>Molecular weight:</b>	45kDa
<b>Cellular localization:</b>	Secretory protein
<b>Form:</b>	Lyophilized or Liquid
<b>Concentration:</b>	1mg/ml
<b>immunogen:</b>	KLH conjugated synthetic peptide derived from human PRSS35:121-220/413
<b>Lsotype:</b>	IgG
<b>Purification:</b>	affinity purified by Protein A
<b>Storage Buffer:</b>	0.01M TBS(pH7.4) with 1% BSA, 0.03% Proclin300 and 50% Glycerol.
<b>Storage:</b>	Store at -20 °C for one year. Avoid repeated freeze/thaw cycles. The lyophilized antibody is stable at room temperature for at least one month and for greater than a year when kept at -20°C. When reconstituted in sterile pH 7.4 0.01M PBS or diluent of antibody the antibody is stable for at least two weeks at 2-4 °C.
<b>PubMed:</b>	<a href="#">PubMed</a>
<b>Product Detail:</b>	PRSS35, although related to the peptidase S1 family, lacks the conserved active Ser residue in position 346 which is replaced by a Thr, suggesting that it has no protease activity. This Ser to Thr substitution may play an important role in determining a unique pattern of substrate specificity for PRSS35. Alternatively, this substitution may yield an inactive protease that binds to specific substrates, thus protecting them from proteolysis. The Mouse Prss35 gene is selectively expressed in the ovary and it's expression prior to

ovulation is, in part, regulated by progesterone. PRSS35 may be involved in ovulation and the formation and regression of the corpus luteum.

**Subcellular Location:**

Secreted

**SWISS:**

Q8N3Z0

**Gene ID:**

167681

**Database links:**

[Entrez Gene: 167681](#) Human

[Entrez Gene: 244954](#) Mouse

[Entrez Gene: 315866](#) Rat

[SwissProt: Q8N3Z0](#) Human

[SwissProt: Q8C0F9](#) Mouse

[SwissProt: Q5R212](#) Rat

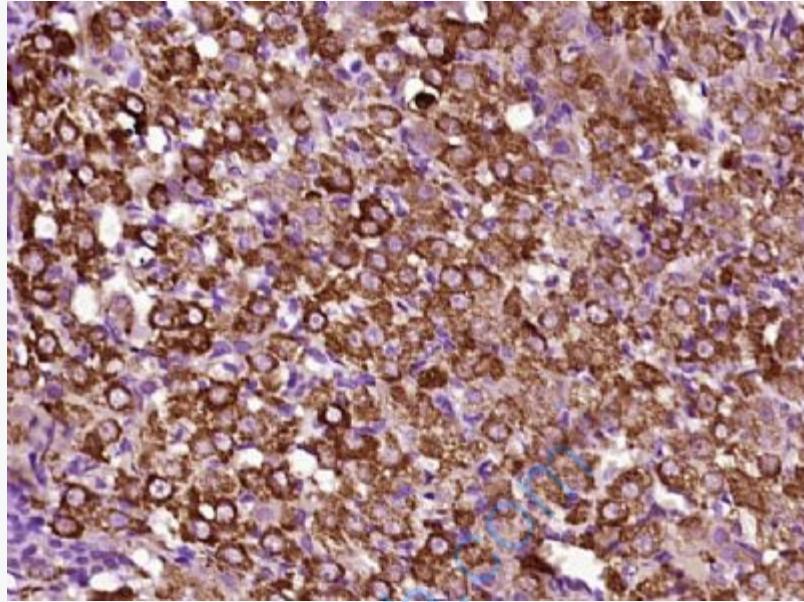
[Unigene: 98381](#) Human

[Unigene: 257629](#) Mouse

[Unigene: 161916](#) Rat

**Important Note:**

This product as supplied is intended for research use only, not for use in human, therapeutic or diagnostic applications.



**Picture:**

Paraformaldehyde-fixed, paraffin embedded (rat ovary tissue); Antigen retrieval by boiling in sodium citrate buffer (pH6.0) for 15min; Block endogenous peroxidase by 3% hydrogen peroxide for 20 minutes; Blocking buffer (normal goat serum) at 37°C for 30min; Antibody incubation with (PRSS35) Polyclonal Antibody, Unconjugated (SL19440R) at 1:400 overnight at 4°C, followed by operating according to SP Kit(Rabbit) (sp-0023) instructions and DAB staining.