



## Rabbit Anti-Prune homolog 2/C9orf65 antibody

SL19448R

<b>Product Name:</b>	Prune homolog 2/C9orf65
<b>Chinese Name:</b>	9号染色体开放阅读框
<b>Alias:</b>	A214N16 3; BCH motif containing molecule at the carboxyl terminal region 1; BMCC1; BNIP2 motif containing molecule at the carboxyl terminal region 1; BNIPXL; C9orf65; chromosome 9 open reading frame 65; prune homolog 2 (Drosophila); Prune2.
<b>Organism Species:</b>	Rabbit
<b>Clonality:</b>	Polyclonal
<b>React Species:</b>	Human, Mouse, Rat, Dog, Pig, Cow, Horse, Rabbit, Sheep,
<b>Applications:</b>	WB=1:500-2000 ELISA=1:500-1000 IHC-P=1:400-800 IHC-F=1:400-800 ICC=1:100-500 IF=1:100-500 (Paraffin sections need antigen repair) not yet tested in other applications. optimal dilutions/concentrations should be determined by the end user.
<b>Molecular weight:</b>	341kDa
<b>Cellular localization:</b>	The nucleus/cytoplasmic
<b>Form:</b>	Lyophilized or Liquid
<b>Concentration:</b>	1mg/ml
<b>immunogen:</b>	KLH conjugated synthetic peptide derived from human Prune homolog 2/C9orf65:2801-2900/3088
<b>Lsotype:</b>	IgG
<b>Purification:</b>	affinity purified by Protein A
<b>Storage Buffer:</b>	0.01M TBS(pH7.4) with 1% BSA, 0.03% Proclin300 and 50% Glycerol.
<b>Storage:</b>	Store at -20℃ for one year. Avoid repeated freeze/thaw cycles. The lyophilized antibody is stable at room temperature for at least one month and for greater than a year when kept at -20℃. When reconstituted in sterile pH 7.4 0.01M PBS or diluent of antibody the antibody is stable for at least two weeks at 2-4℃.
<b>PubMed:</b>	<a href="#">PubMed</a>
<b>Product Detail:</b>	The protein encoded by this gene belongs to the B-cell CLL/lymphoma 2 and adenovirus E1B 19 kDa interacting family, whose members play roles in many cellular processes including apoptosis, cell transformation, and synaptic function. Several functions for this

protein have been demonstrated including suppression of Ras homolog family member A activity, which results in reduced stress fiber formation and suppression of oncogenic cellular transformation. A high molecular weight isoform of this protein has also been shown to colocalize with Adaptor protein complex 2, beta-Adaptin and endodermal markers, suggesting an involvement in post-endocytic trafficking. In prostate cancer cells, this gene acts as a tumor suppressor and its expression is regulated by prostate cancer antigen 3, a non-protein coding gene on the opposite DNA strand in an intron of this gene. Prostate cancer antigen 3 regulates levels of this gene through formation of a double-stranded RNA that undergoes adenosine deaminase actin on RNA-dependent adenosine-to-inosine RNA editing. Alternative splicing results in multiple transcript variants. [provided by RefSeq, Jul 2015]

**Function:**

Phosphodiesterase (PDE) that has higher activity toward cAMP than cGMP, as substrate. Plays a role in cell proliferation, is able to induce cell motility and acts as a negative regulator of NME1.

**Subunit:**

Homooligomer. Able to homodimerize via its C-terminal domain. Interacts with NME1. Interacts with GSK3; at focal adhesion complexes where paxillin and vinculin are colocalized.

**Subcellular Location:**

Cytoplasm. Nucleus. Cell junction ?focal adhesion

**Tissue Specificity:**

Ubiquitously expressed. Seems to be overexpressed in aggressive sarcoma subtypes, such as leiomyosarcomas and malignant fibrous histiocytomas (MFH) as well as in the less malignant liposarcomas.

**Similarity:**

Belongs to the PPase class C family. Prune subfamily.

**SWISS:**

Q8WUY3

**Gene ID:**

158471

**Database links:**

[Entrez Gene: 158471](#) Human

[Entrez Gene: 353211](#) Mouse

[SwissProt: Q8WUY3](#) Human

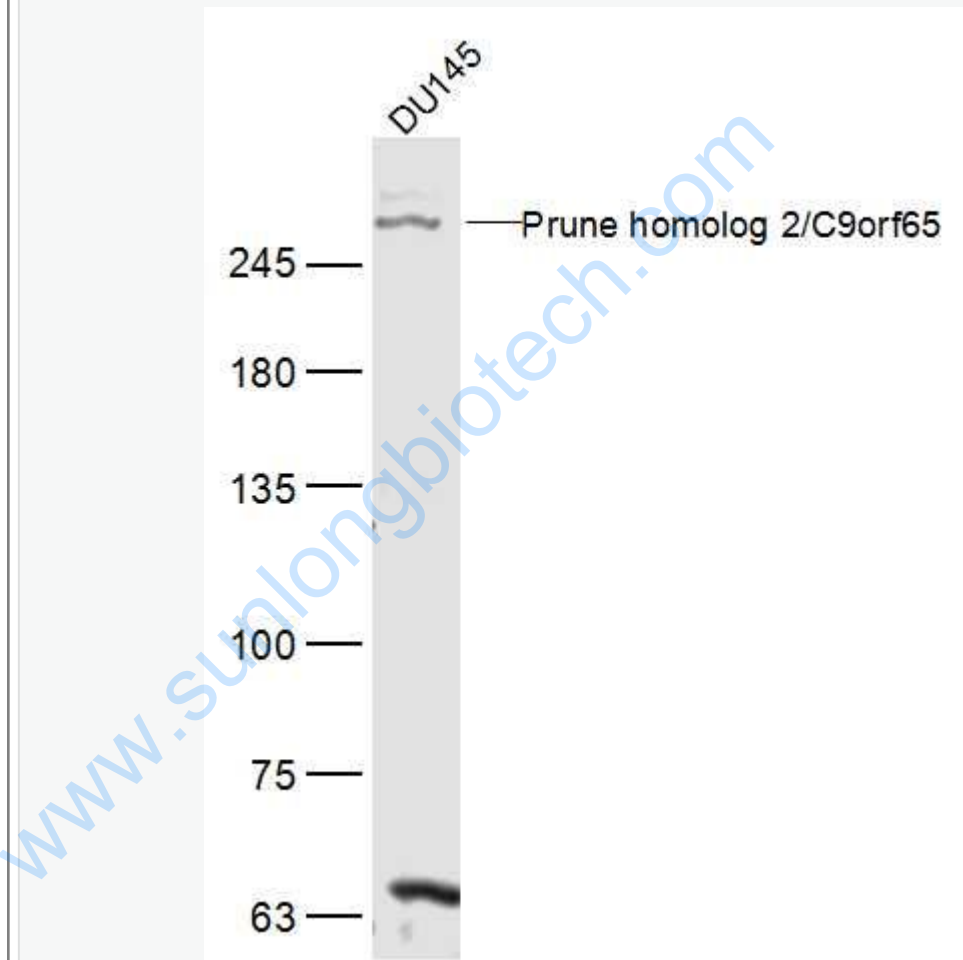
[SwissProt: Q9D217](#) Mouse

**Important Note:**

This product as supplied is intended for research use only, not for use in human, therapeutic or diagnostic applications.

与in isoform 2,3,4,5同源

Picture:



Sample:

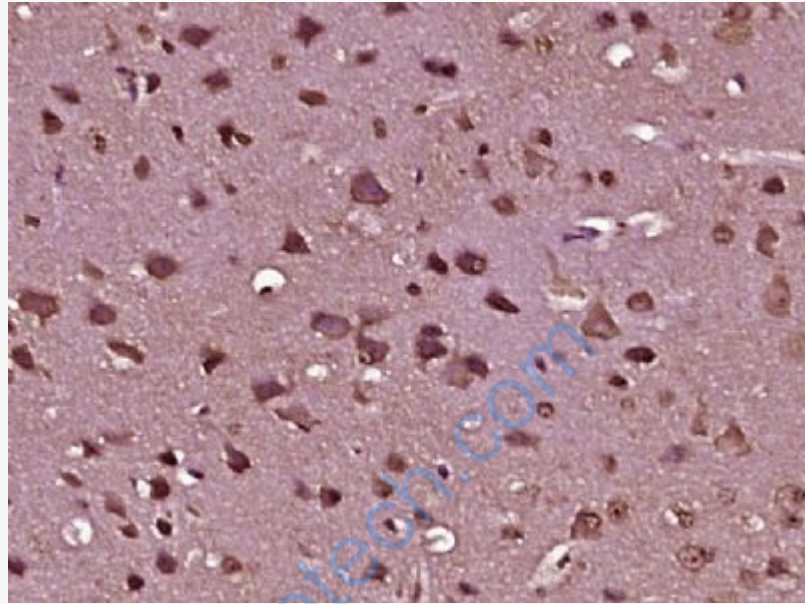
DU145(Human) Cell Lysate at 30 ug

Primary: Anti-Prune homolog 2/C9orf65 (SL19448R) at 1/300 dilution

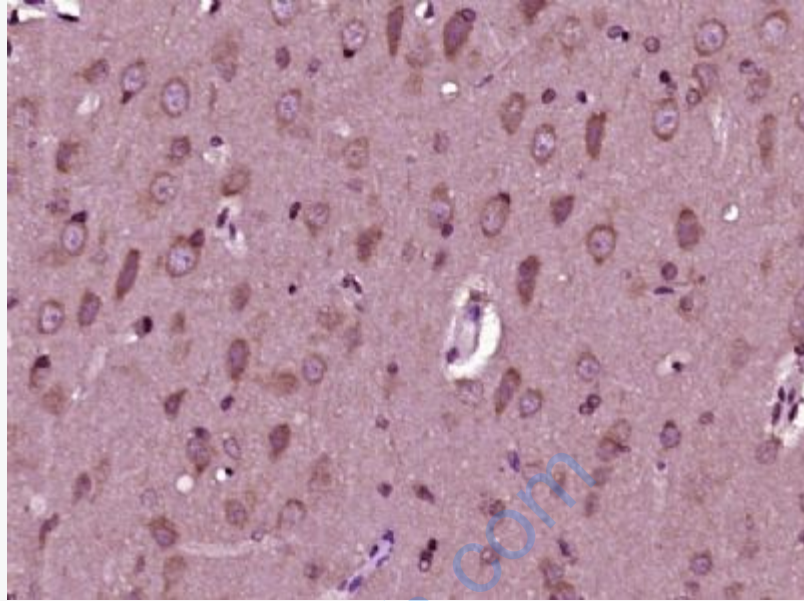
Secondary: IRDye800CW Goat Anti-Rabbit IgG at 1/20000 dilution

Predicted band size: 341 kD

Observed band size: 341 kD



Paraformaldehyde-fixed, paraffin embedded (mouse brain tissue); Antigen retrieval by boiling in sodium citrate buffer (pH6.0) for 15min; Block endogenous peroxidase by 3% hydrogen peroxide for 20 minutes; Blocking buffer (normal goat serum) at 37°C for 30min; Antibody incubation with (C9orf65) Polyclonal Antibody, Unconjugated (SL19448R) at 1:400 overnight at 4°C, followed by operating according to SP Kit(Rabbit) (sp-0023) instructions and DAB staining.



Paraformaldehyde-fixed, paraffin embedded (rat brain tissue); Antigen retrieval by boiling in sodium citrate buffer (pH6.0) for 15min; Block endogenous peroxidase by 3% hydrogen peroxide for 20 minutes; Blocking buffer (normal goat serum) at 37°C for 30min; Antibody incubation with (C9orf65) Polyclonal Antibody, Unconjugated (SL19448R) at 1:400 overnight at 4°C, followed by operating according to SP Kit(Rabbit) (sp-0023) instructions and DAB staining.