



Rabbit Anti-WRCH1 antibody

SL1944R

Product Name:	WRCH1
Chinese Name:	WRCH1抗体
Alias:	WRCH-1; WRCH 1; Wnt-1 responsive Cdc42 homolog 1; Rho-related GTP-binding protein RhoU; Ryu GTPase; CDC42-like GTPase 1; Rho GTPase-like protein ARHU; GTP-binding protein-like 1; RHOU; SB128; ARHU; CDC42L1; G28K; WRCH1; RHOU HUMAN.
Organism Species:	Rabbit
Clonality:	Polyclonal
React Species:	Human,Mouse,Rat,Cow,Rabbit,
Applications:	WB=1:500-2000ELISA=1:500-1000IHC-P=1:400-800IHC-F=1:400-800IF=1:100-500 (Paraffin sections need antigen repair) not yet tested in other applications. optimal dilutions/concentrations should be determined by the end user.
Molecular weight:	29kDa
Cellular localization:	cytoplasmicThe cell membrane
Form:	Lyophilized or Liquid
Concentration:	1mg/ml
immunogen:	KLH conjugated synthetic peptide derived from human WRCH-1:151-258/258
Lsotype:	IgG
Purification:	affinity purified by Protein A
Storage Buffer:	0.01M TBS(pH7.4) with 1% BSA, 0.03% Proclin300 and 50% Glycerol.
Storage:	Store at -20 °C for one year. Avoid repeated freeze/thaw cycles. The lyophilized antibody is stable at room temperature for at least one month and for greater than a year when kept at -20°C. When reconstituted in sterile pH 7.4 0.01M PBS or diluent of antibody the antibody is stable for at least two weeks at 2-4 °C.
PubMed:	PubMed
Product Detail:	The WRCH1 protein is a member of the Rho family of GTPases. This protein can activate PAK1 and JNK1, and can induce filopodium formation and stress fiber dissolution. It may also mediate the effects of WNT1 signaling in the regulation of cell morphology, cytoskeletal organization, and cell proliferation.

Function:

Acts upstream of PAK1 to regulate the actin cytoskeleton, adhesion turnover and increase cell migration. Stimulates quiescent cells to reenter the cell cycle. Has no detectable GTPase activity but its high intrinsic guanine nucleotide exchange activity suggests it is constitutively GTP-bound. Plays a role in the regulation of cell morphology and cytoskeletal organization. Required in the control of cell shape.

Subunit:

Interacts with PAK3.

Subcellular Location:

Cell membrane; Lipid-anchor; Cytoplasmic side. Golgi apparatus membrane; Lipid-anchor. Cell junction, focal adhesion. Cell projection, podosome. Note=Localizes to podosomes in SRC-transformed cells.

Tissue Specificity:

Ubiquitously expressed in all tissues examined. Expressed at high levels in the stomach, small intestine, brain, skeletal muscle and placenta.

Post-translational modifications:

Tyrosine phosphorylated by SRC in response to PTK2B/PYK2 activation.

Similarity:

Belongs to the small GTPase superfamily. Rho family.

SWISS:

Q7L0Q8

Gene ID:

58480

Database links:

[Entrez Gene: 58480](#)Human

[Entrez Gene: 69581](#)Mouse

[Oimim: 606366](#)Human

[SwissProt: Q7L0Q8](#)Human

[SwissProt: Q9EQT3](#)Mouse

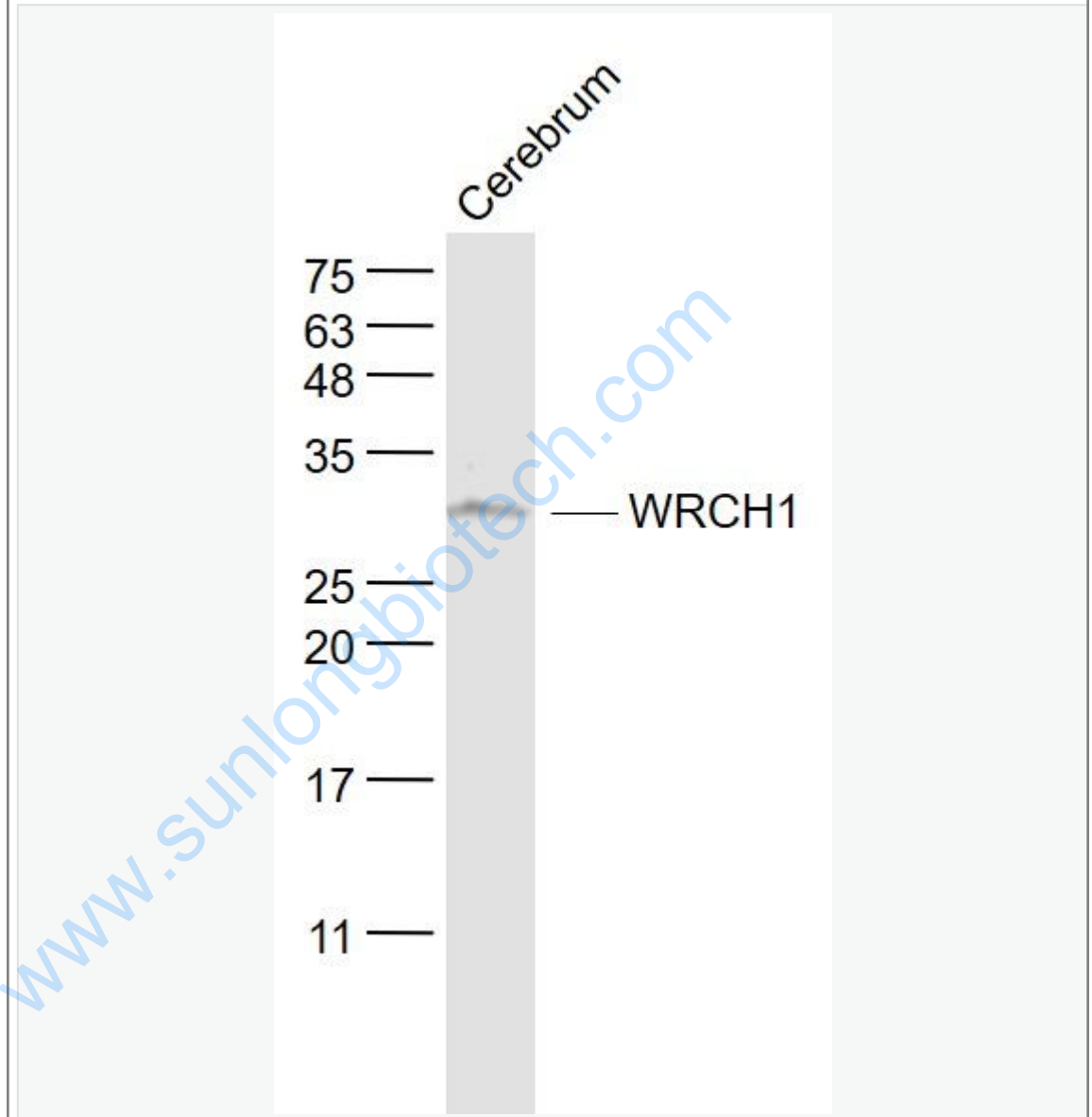
[Unigene: 647774](#)Human

[Unigene: 168257](#)Mouse

Important Note:

This product as supplied is intended for research use only, not for use in human, therapeutic or diagnostic applications.

Picture:



Sample:

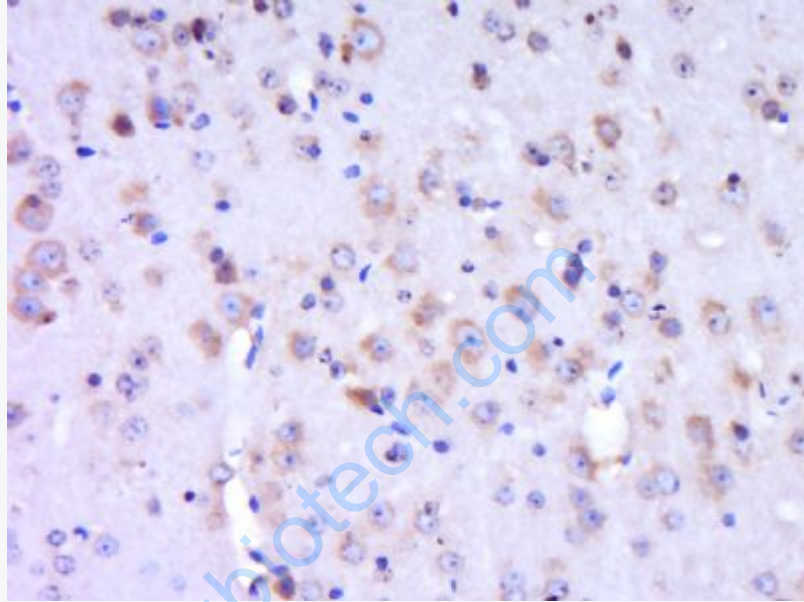
Cerebrum (Mouse) Lysate at 40 ug

Primary: Anti- WRCH1 (SL1944R) at 1/1000 dilution

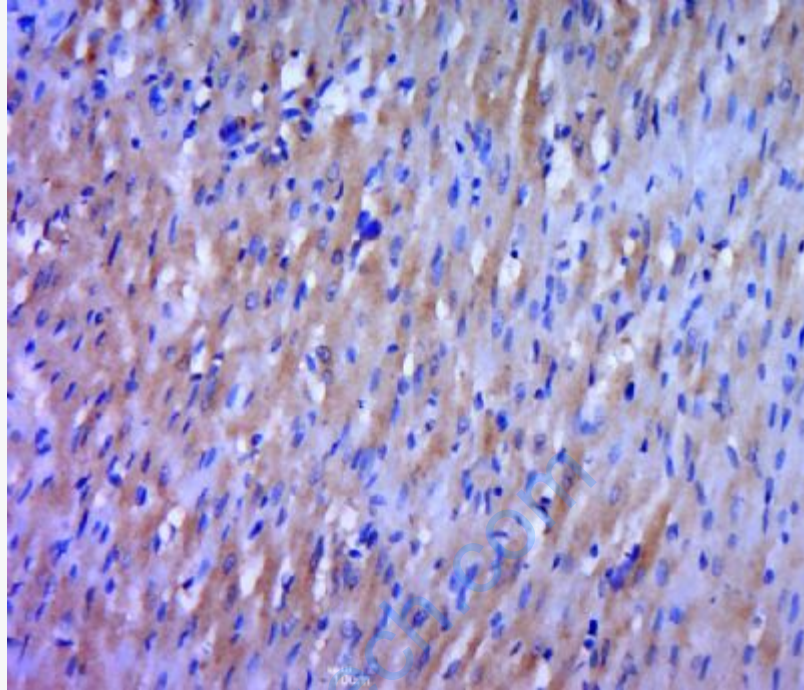
Secondary: IRDye800CW Goat Anti-Rabbit IgG at 1/20000 dilution

Predicted band size: 29 kD

Observed band size: 29 kD



Paraformaldehyde-fixed, paraffin embedded (mouse brain tissue); Antigen retrieval by boiling in sodium citrate buffer (pH6.0) for 15min; Block endogenous peroxidase by 3% hydrogen peroxide for 20 minutes; Blocking buffer (normal goat serum) at 37°C for 30min; Antibody incubation with (WRCH1) Polyclonal Antibody, Unconjugated (SL1944R) at 1:400 overnight at 4°C, followed by a conjugated secondary (sp-0023) for 20 minutes and DAB staining.



Paraformaldehyde-fixed, paraffin embedded (rat heart tissue); Antigen retrieval by boiling in sodium citrate buffer (pH6.0) for 15min; Block endogenous peroxidase by 3% hydrogen peroxide for 20 minutes; Blocking buffer (normal goat serum) at 37°C for 30min; Antibody incubation with (WRCH1) Polyclonal Antibody, Unconjugated (SL1944R) at 1:400 overnight at 4°C, followed by a conjugated secondary (sp-0023) for 20 minutes and DAB staining.