



Rabbit Anti-PSG4 antibody

SL19455R

Product Name:	PSG4
Chinese Name:	妊娠特异性glycoprotein4抗体
Alias:	Pregnancy specific beta 1 glycoprotein 4; Pregnancy-specific beta-1-glycoprotein 4; Pregnancy-specific beta-1-glycoprotein 9; Pregnancy-specific glycoprotein 4; Pregnancy-specific glycoprotein 9; PS-beta-G-4; PS-beta-G-9; PSBG 4; PSBG 9; PSBG-4; PSBG-9; PSBG4; PSBG9; PSG4; PSG4 HUMAN; PSG9.
Organism Species:	Rabbit
Clonality:	Polyclonal
React Species:	Human,
Applications:	WB=1:500-2000ELISA=1:500-1000IHC-P=1:400-800IHC-F=1:400-800ICC=1:100-500IF=1:100-500 (Paraffin sections need antigen repair) not yet tested in other applications. optimal dilutions/concentrations should be determined by the end user.
Molecular weight:	47kDa
Cellular localization:	Secretory protein
Form:	Lyophilized or Liquid
Concentration:	1mg/ml
immunogen:	KLH conjugated synthetic peptide derived from human PSG4:301-400/419
Lsotype:	IgG
Purification:	affinity purified by Protein A
Storage Buffer:	0.01M TBS(pH7.4) with 1% BSA, 0.03% Proclin300 and 50% Glycerol.
Storage:	Store at -20 °C for one year. Avoid repeated freeze/thaw cycles. The lyophilized antibody is stable at room temperature for at least one month and for greater than a year when kept at -20°C. When reconstituted in sterile pH 7.4 0.01M PBS or diluent of antibody the antibody is stable for at least two weeks at 2-4 °C.
PubMed:	PubMed
Product Detail:	The human pregnancy-specific glycoproteins (PSGs) are a family of proteins that are synthesized in large amounts by placental trophoblasts and released into the maternal circulation during pregnancy. Molecular cloning and analysis of several PSG genes has indicated that the PSGs form a subgroup of the carcinoembryonic antigen (CEA) gene

family, which belongs to the immunoglobulin superfamily of genes. Members of the CEA family consist of a single N domain, with structural similarity to the immunoglobulin variable domains, followed by a variable number of immunoglobulin constant-like A and/or B domains. Most PSGs have an arg-gly-asp (RGD) motif, which has been shown to function as an adhesion recognition signal for several integrins, in the N-terminal domain (summary by Teglund et al., 1994 [PubMed 7851896]). For additional general information about the PSG gene family, see PSG1 (MIM 176390).[supplied by OMIM, Oct 2009]

Subcellular Location:

Secreted.

Tissue Specificity:

PSBG are produced in high quantity during pregnancy.

Similarity:

Belongs to the immunoglobulin superfamily. CEA family.
Contains 3 Ig-like C2-type (immunoglobulin-like) domains.
Contains 1 Ig-like V-type (immunoglobulin-like) domain.

SWISS:

Q00888

Gene ID:

5672

Database links:

[Entrez Gene: 5672](#) Human

[Omim: 176393](#) Human

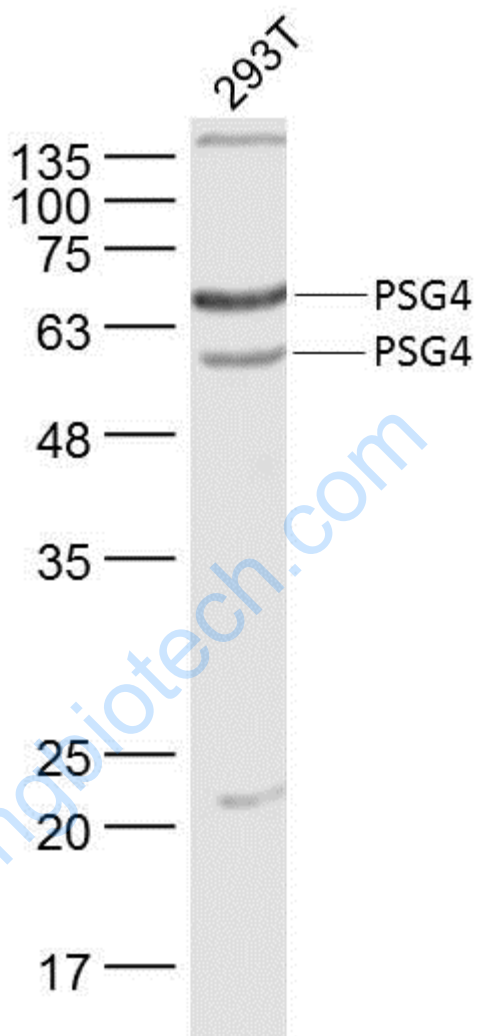
[SwissProt: Q00888](#) Human

[Unigene: 711363](#) Human

Important Note:

This product as supplied is intended for research use only, not for use in human, therapeutic or diagnostic applications.

Picture:



Sample:

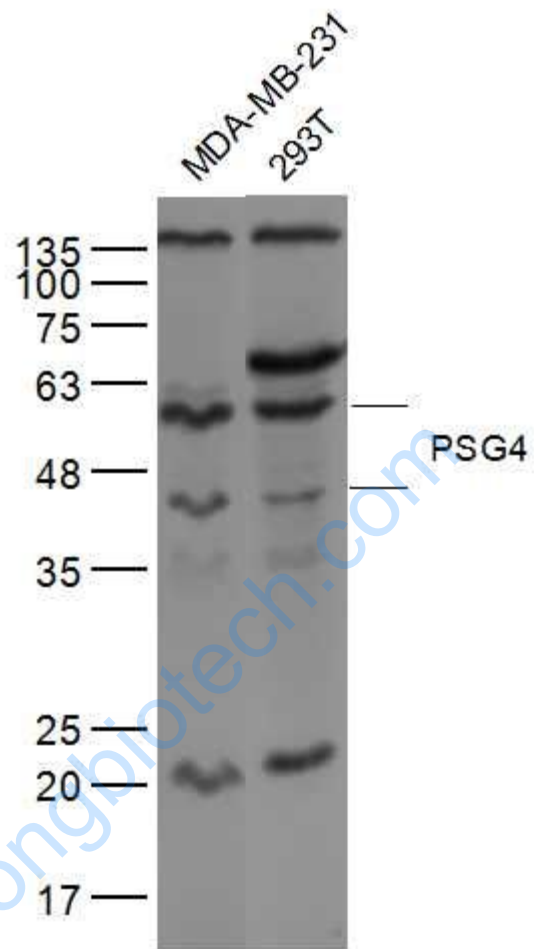
293T(Human) Lysate at 30 ug

Primary: Anti- PSG4 (SL19455R) at 1/300 dilution

Secondary: IRDye800CW Goat Anti-Rabbit IgG at 1/20000 dilution

Predicted band size: 47 kD

Observed band size: 57/67 kD



Sample:

MDA-MB-231(Human) Cell Lysate at 30 ug

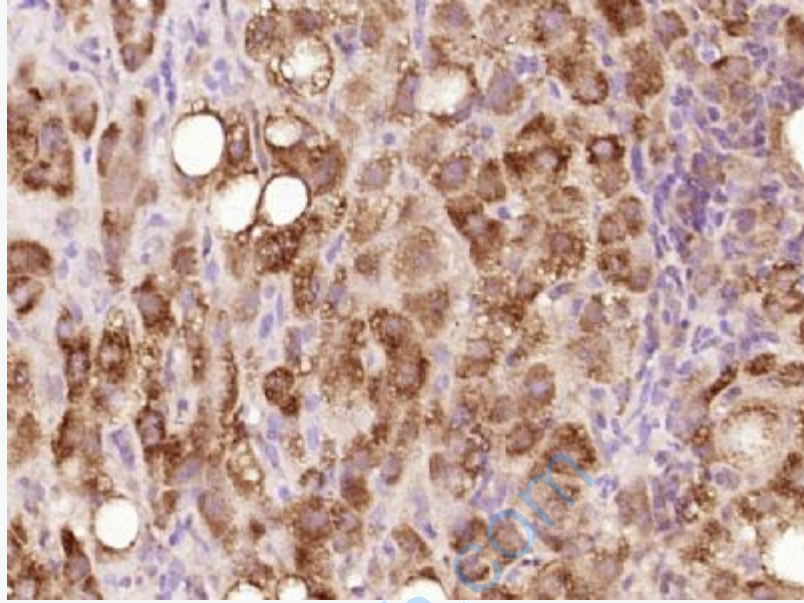
293T(Human) Cell Lysate at 30 ug

Primary: Anti-PSG4 (SL19455R) at 1/300 dilution

Secondary: IRDye800CW Goat Anti-Rabbit IgG at 1/20000 dilution

Predicted band size: 47 kD

Observed band size: 42/57 kD



Paraformaldehyde-fixed, paraffin embedded (human liver carcinoma); Antigen retrieval by boiling in sodium citrate buffer (pH6.0) for 15min; Block endogenous peroxidase by 3% hydrogen peroxide for 20 minutes; Blocking buffer (normal goat serum) at 37°C for 30min; Antibody incubation with (PSG4) Polyclonal Antibody, Unconjugated (SL19455R) at 1:400 overnight at 4°C, followed by operating according to SP Kit(Rabbit) (sp-0023) instructions and DAB staining.