



Rabbit Anti-PSG6 antibody

SL19457R

Product Name:	PSG6
Chinese Name:	妊娠特异性glycoprotein6抗体
Alias:	CGM3; Pregnancy specific beta 1 glycoprotein 6; Pregnancy-specific beta-1-glycoprotein 10; Pregnancy-specific beta-1-glycoprotein 12; Pregnancy-specific beta-1-glycoprotein 6; Pregnancy-specific glycoprotein 10; Pregnancy-specific glycoprotein 12; Pregnancy-specific glycoprotein 6; PS-beta-G-10; PS-beta-G-12; PS-beta-G-6; PSBG 6; PSBG-10; PSBG-12; PSBG-6; PSG10; PSG6; PSG6_HUMAN; PSGGB.
Organism Species:	Rabbit
Clonality:	Polyclonal
React Species:	Human,
Applications:	ELISA=1:500-1000IHC-P=1:400-800IHC-F=1:400-800ICC=1:100-500IF=1:100-500 (Paraffin sections need antigen repair) not yet tested in other applications. optimal dilutions/concentrations should be determined by the end user.
Molecular weight:	49kDa
Cellular localization:	Secretory protein
Form:	Lyophilized or Liquid
Concentration:	1mg/ml
immunogen:	KLH conjugated synthetic peptide derived from human PSG6:351-435/435
Lsotype:	IgG
Purification:	affinity purified by Protein A
Storage Buffer:	0.01M TBS(pH7.4) with 1% BSA, 0.03% Proclin300 and 50% Glycerol.
Storage:	Store at -20 °C for one year. Avoid repeated freeze/thaw cycles. The lyophilized antibody is stable at room temperature for at least one month and for greater than a year when kept at -20°C. When reconstituted in sterile pH 7.4 0.01M PBS or diluent of antibody the antibody is stable for at least two weeks at 2-4 °C.
PubMed:	PubMed
Product Detail:	This gene is a member of the pregnancy-specific glycoprotein (PSG) gene family. The PSG genes are a subgroup of the carcinoembryonic antigen (CEA) family of immunoglobulin-like genes, and are found in a gene cluster at 19q13.1-q13.2 telomeric

to another cluster of CEA-related genes. The PSG genes are expressed by placental trophoblasts and released into the maternal circulation during pregnancy, and are thought to be essential for maintenance of normal pregnancy. The protein encoded by this gene contains the Arg-Gly-Asp tripeptide associated with cellular adhesion and recognition. Alternative splicing results in multiple transcript variants and protein isoforms. [provided by RefSeq, Jul 2012]

Subcellular Location:

Secreted.

Tissue Specificity:

PSBG are produced in high quantity during pregnancy.

Similarity:

Belongs to the immunoglobulin superfamily. CEA family.
Contains 3 Ig-like C2-type (immunoglobulin-like) domains.
Contains 1 Ig-like V-type (immunoglobulin-like) domain.

SWISS:

Q00889

Gene ID:

5675

Database links:

[Entrez Gene: 5675](#) Human

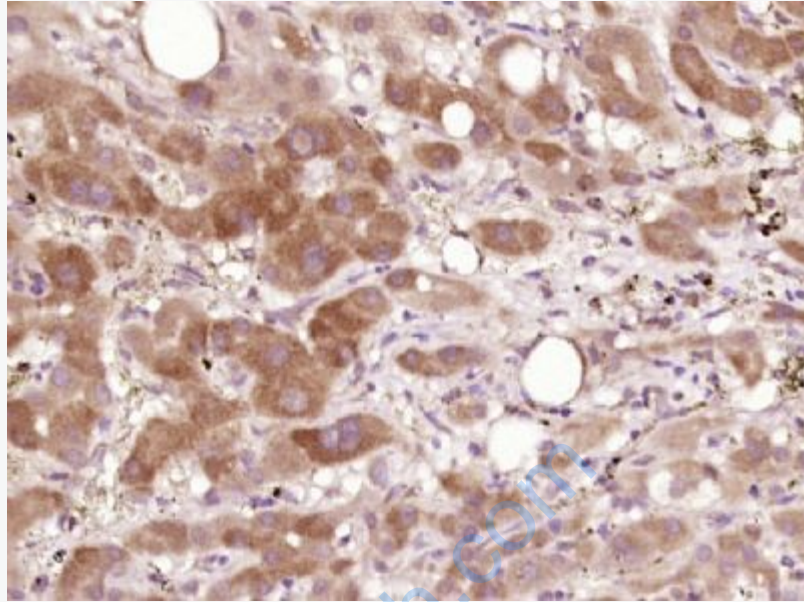
[Omim: 176395](#) Human

[SwissProt: Q00889](#) Human

[Unigene: 646353](#) Human

Important Note:

This product as supplied is intended for research use only, not for use in human, therapeutic or diagnostic applications.



Picture:

Paraformaldehyde-fixed, paraffin embedded (human liver carcinoma); Antigen retrieval by boiling in sodium citrate buffer (pH6.0) for 15min; Block endogenous peroxidase by 3% hydrogen peroxide for 20 minutes; Blocking buffer (normal goat serum) at 37°C for 30min; Antibody incubation with (PSG6) Polyclonal Antibody, Unconjugated (SL19457R) at 1:400 overnight at 4°C, followed by operating according to SP Kit(Rabbit) (sp-0023) instructions and DAB staining.