



## Rabbit Anti-PSG7 antibody

SL19458R

<b>Product Name:</b>	PSG7
<b>Chinese Name:</b>	妊娠特异性glycoprotein7抗体
<b>Alias:</b>	OTTHUMP00000209547; Pregnancy specific beta 1 glycoprotein 7 (gene/pseudogene); Pregnancy specific beta 1 glycoprotein; Pregnancy specific glycoprotein 7; PS beta G 7; PSBG 7; PSG1; PSGGA; Putative pregnancy specific beta 1 glycoprotein 7.
<b>Organism Species:</b>	Rabbit
<b>Clonality:</b>	Polyclonal
<b>React Species:</b>	Human,
<b>Applications:</b>	WB=1:500-2000ELISA=1:500-1000IHC-P=1:400-800IHC-F=1:400-800ICC=1:100-500IF=1:100-500 (Paraffin sections need antigen repair) not yet tested in other applications. optimal dilutions/concentrations should be determined by the end user.
<b>Molecular weight:</b>	47kDa
<b>Cellular localization:</b>	Secretory protein
<b>Form:</b>	Lyophilized or Liquid
<b>Concentration:</b>	1mg/ml
<b>immunogen:</b>	KLH conjugated synthetic peptide derived from human PSG7:451-419/419
<b>Lsotype:</b>	IgG
<b>Purification:</b>	affinity purified by Protein A
<b>Storage Buffer:</b>	0.01M TBS(pH7.4) with 1% BSA, 0.03% Proclin300 and 50% Glycerol.
<b>Storage:</b>	Store at -20 °C for one year. Avoid repeated freeze/thaw cycles. The lyophilized antibody is stable at room temperature for at least one month and for greater than a year when kept at -20°C. When reconstituted in sterile pH 7.4 0.01M PBS or diluent of antibody the antibody is stable for at least two weeks at 2-4 °C.
<b>PubMed:</b>	<a href="#">PubMed</a>
<b>Product Detail:</b>	This gene is a member of the pregnancy-specific glycoprotein (PSG) gene family. The PSG genes are a subgroup of the carcinoembryonic antigen (CEA) family of immunoglobulin-like genes, and are found in a gene cluster at 19q13.1-q13.2 telomeric to another cluster of CEA-related genes. The PSG genes are expressed by placental trophoblasts and released into the maternal circulation during pregnancy, and are

thought to be essential for maintenance of normal pregnancy. Alternative splicing results in multiple transcript variants. [provided by RefSeq, Feb 2014]

**Subcellular Location:**

Secreted

**SWISS:**

Q13046

**Gene ID:**

5676

**Database links:**

[Entrez Gene: 5676](#) Human

[Omim: 176396](#) Human

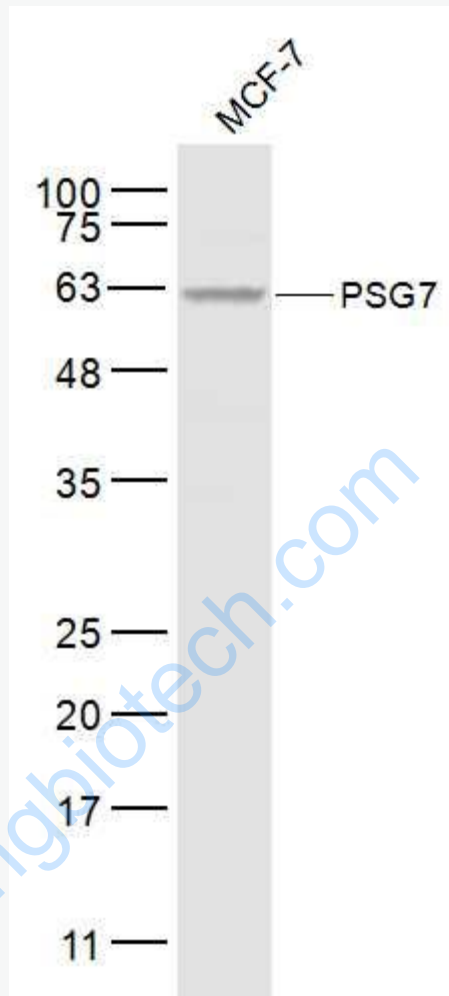
[SwissProt: Q13046](#) Human

**Important Note:**

This product as supplied is intended for research use only, not for use in human, therapeutic or diagnostic applications.

www.sunlongbiotech.com

Picture:



Sample:

MCF-7(Human) Cell Lysate at 30 ug

Primary: Anti-PSG7 (SL19458R) at 1/1000 dilution

Secondary: IRDye800CW Goat Anti-Rabbit IgG at 1/20000 dilution

Predicted band size: 47 kD

Observed band size: 62 kD