



Rabbit Anti-PSMC3 antibody

SL19463R

Product Name:	PSMC3
Chinese Name:	蛋白酶体26S亚基ATP酶3抗体
Alias:	26S protease regulatory subunit 6A; 26S proteasome AAA-ATPase subunit RPT5; Human immunodeficiency virus tat transactivator binding protein 1; MGC8487; Proteasome (prosome macropain) 26S subunit ATPase 3; Proteasome 26S ATPase subunit 3; Proteasome 26S subunit ATPase 3; Proteasome subunit P50; PRS6A_HUMAN; PSMC 3; PSMC3; Tat binding protein 1; TAT-binding protein 1; TBP-1; TBP1.
Organism Species:	Rabbit
Clonality:	Polyclonal
React Species:	Human,Mouse,Dog,Cow,Horse,Xenopus laevis
Applications:	WB=1:500-2000ELISA=1:500-1000IHC-P=1:400-800IHC-F=1:400-800ICC=1:100-500IF=1:100-500 (Paraffin sections need antigen repair) not yet tested in other applications. optimal dilutions/concentrations should be determined by the end user.
Molecular weight:	49kDa
Cellular localization:	The nucleuscytoplasmic
Form:	Lyophilized or Liquid
Concentration:	1mg/ml
immunogen:	KLH conjugated synthetic peptide derived from human PSMC3:212-220/439
Lsotype:	IgG
Purification:	affinity purified by Protein A
Storage Buffer:	0.01M TBS(pH7.4) with 1% BSA, 0.03% Proclin300 and 50% Glycerol.
Storage:	Store at -20 °C for one year. Avoid repeated freeze/thaw cycles. The lyophilized antibody is stable at room temperature for at least one month and for greater than a year when kept at -20°C. When reconstituted in sterile pH 7.4 0.01M PBS or diluent of antibody the antibody is stable for at least two weeks at 2-4 °C.
PubMed:	PubMed
Product Detail:	The 26S proteasome is a multicatalytic proteinase complex with a highly ordered structure composed of 2 complexes, a 20S core and a 19S regulator. The 20S core is

composed of 4 rings of 28 non-identical subunits; 2 rings are composed of 7 alpha subunits and 2 rings are composed of 7 beta subunits. The 19S regulator is composed of a base, which contains 6 ATPase subunits and 2 non-ATPase subunits, and a lid, which contains up to 10 non-ATPase subunits. Proteasomes are distributed throughout eukaryotic cells at a high concentration and cleave peptides in an ATP/ubiquitin-dependent process in a non-lysosomal pathway. An essential function of a modified proteasome, the immunoproteasome, is the processing of class I MHC peptides. This gene encodes one of the ATPase subunits, a member of the triple-A family of ATPases that have chaperone-like activity. This subunit may compete with PSMC2 for binding to the HIV tat protein to regulate the interaction between the viral protein and the transcription complex. A pseudogene has been identified on chromosome 9. [provided by RefSeq, Jul 2008]

Function:

The 26S protease is involved in the ATP-dependent degradation of ubiquitinated proteins. The regulatory (or ATPase) complex confers ATP dependency and substrate specificity to the 26S complex (By similarity). In case of HIV-1 infection, suppresses Tat-mediated transactivation.

Subcellular Location:

Cytoplasm. Nucleus.

Post-translational modifications:

Sumoylated by UBE2I in response to MEKK1-mediated stimuli.

Similarity:

Belongs to the AAA ATPase family.

SWISS:

P17980

Gene ID:

5702

Database links:

[Entrez Gene: 5702](#) Human

[Entrez Gene: 19182](#) Mouse

[Entrez Gene: 29677](#) Rat

[Entrez Gene: 379370](#) Xenopus laevis

[Omim: 186852](#) Human

[SwissProt: P17980](#) Human

[SwissProt: O88685](#) Mouse

[SwissProt: Q63569](#) Rat

[SwissProt: O42586](#) Xenopus laevis

[Unigene: 250758](#) Human

[Unigene: 289832](#) Mouse

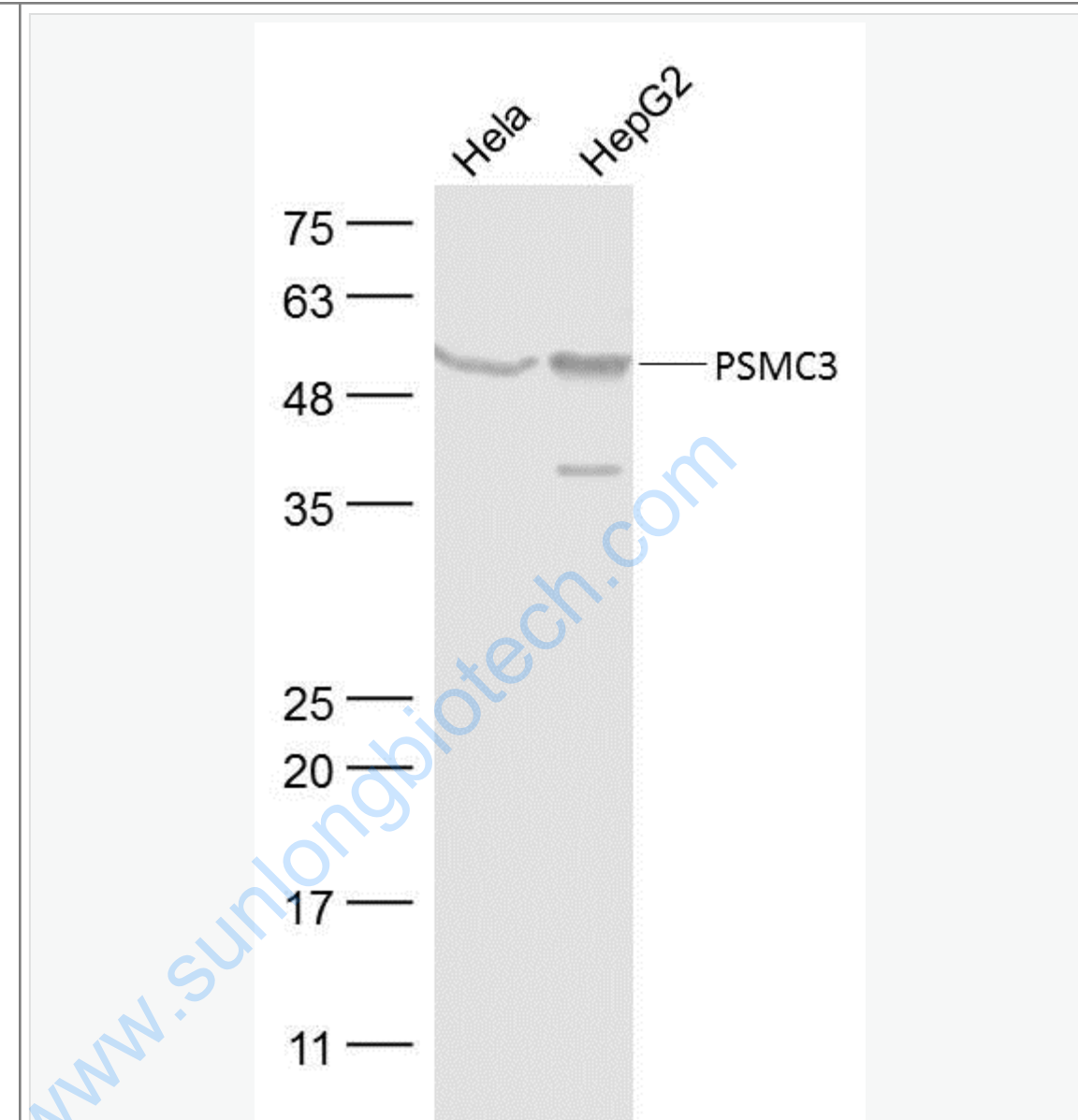
[Unigene: 11173](#) Rat

Important Note:

This product as supplied is intended for research use only, not for use in human, therapeutic or diagnostic applications.

www.sunlongbiotech.com

Picture:



Sample:

HeLa(Human) Cell Lysate at 30 ug

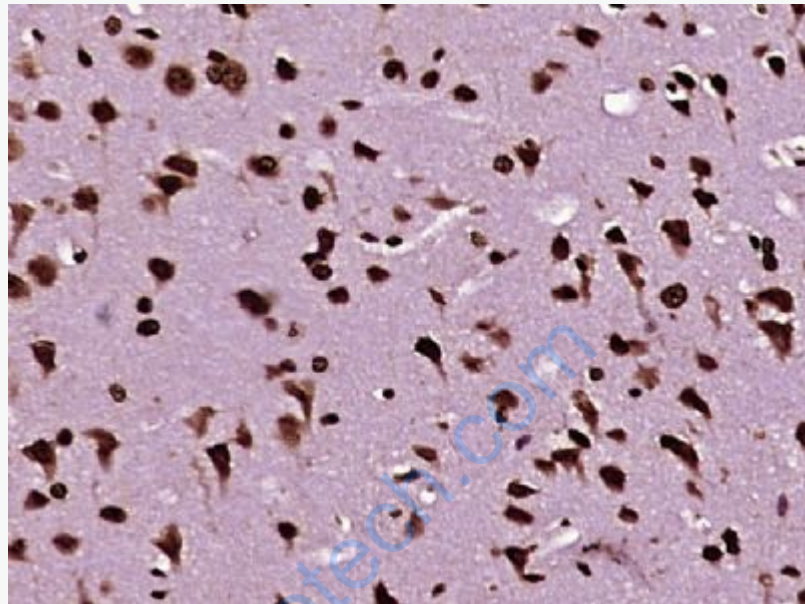
HepG2(Human) Cell Lysate at 30 ug

Primary: Anti-PSMC3 (SL19463R) at 1/300 dilution

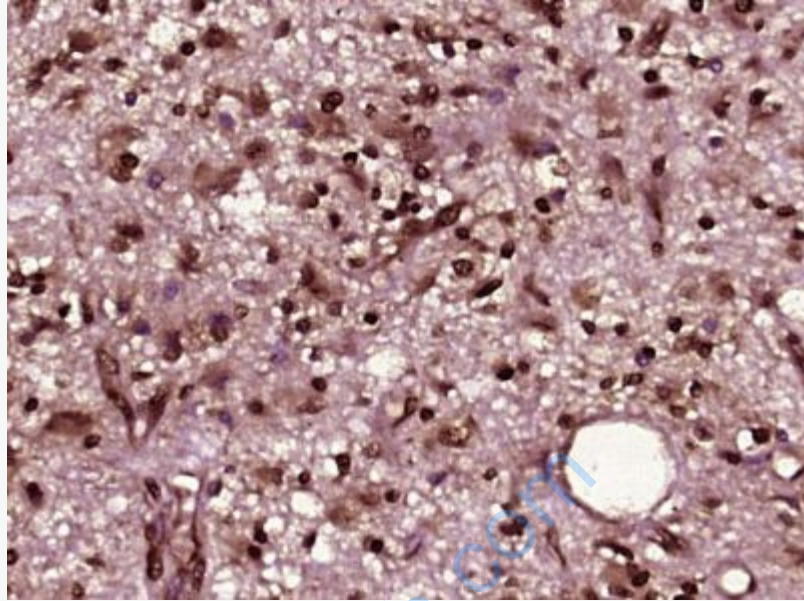
Secondary: IRDye800CW Goat Anti-Rabbit IgG at 1/20000 dilution

Predicted band size: 49 kD

Observed band size: 49 kD



Paraformaldehyde-fixed, paraffin embedded (mouse brain tissue); Antigen retrieval by boiling in sodium citrate buffer (pH6.0) for 15min; Block endogenous peroxidase by 3% hydrogen peroxide for 20 minutes; Blocking buffer (normal goat serum) at 37°C for 30min; Antibody incubation with (PSMC3) Polyclonal Antibody, Unconjugated (SL19463R) at 1:400 overnight at 4°C, followed by operating according to SP Kit(Rabbit) (sp-0023) instructions and DAB staining.



Paraformaldehyde-fixed, paraffin embedded (human brain glioma); Antigen retrieval by boiling in sodium citrate buffer (pH6.0) for 15min; Block endogenous peroxidase by 3% hydrogen peroxide for 20 minutes; Blocking buffer (normal goat serum) at 37°C for 30min; Antibody incubation with (PSMC3) Polyclonal Antibody, Unconjugated (SL19463R) at 1:400 overnight at 4°C, followed by operating according to SP Kit(Rabbit) (sp-0023) instructions and DAB staining.