



Rabbit Anti-nSMase antibody

SL19472R

Product Name:	nSMase
Chinese Name:	神经鞘磷脂磷酸二酯酶2抗体
Alias:	ISC1; Lyso platelet activating factor phospholipase C; Lyso-PAF-PLC; Lyso-platelet-activating factor-phospholipase C; N-SMase; Neutral sphingomyelinase; NSMA_HUMAN; nSMase; NSMASE1; Smpd2; Sphingomyelin phosphodiesterase 2; Sphingomyelin phosphodiesterase 2, neutral membrane (neutral sphingomyelinase).
Organism Species:	Rabbit
Clonality:	Polyclonal
React Species:	Human,Mouse,Rat,Cow,Horse,
Applications:	WB=1:500-2000IHC-P=1:400-800IHC-F=1:400-800ICC=1:100-500IF=1:100-500 (Paraffin sections need antigen repair) not yet tested in other applications. optimal dilutions/concentrations should be determined by the end user.
Molecular weight:	47kDa
Cellular localization:	The cell membrane
Form:	Lyophilized or Liquid
Concentration:	1mg/ml
immunogen:	KLH conjugated synthetic peptide derived from human nSMase:1-100/423
Lsotype:	IgG
Purification:	affinity purified by Protein A
Storage Buffer:	0.01M TBS(pH7.4) with 1% BSA, 0.03% Proclin300 and 50% Glycerol.
Storage:	Store at -20 °C for one year. Avoid repeated freeze/thaw cycles. The lyophilized antibody is stable at room temperature for at least one month and for greater than a year when kept at -20°C. When reconstituted in sterile pH 7.4 0.01M PBS or diluent of antibody the antibody is stable for at least two weeks at 2-4 °C.
PubMed:	PubMed
Product Detail:	This gene encodes a protein which was initially identified as a sphingomyelinase based on sequence similarity between bacterial sphingomyelinases and a yeast protein. Subsequent studies showed that its biological function is less likely to be as a sphingomyelinase and instead as a lysophospholipase. [provided by RefSeq, Oct 2009]

Function:

Converts sphingomyelin to ceramide. Hydrolyze 1-acyl-2-lyso-sn-glycero-3-phosphocholine (lyso-PC) and 1-O-alkyl-2-lyso-sn-glycero-3-phosphocholine (lyso-platelet-activating factor). The physiological substrate seems to be Lyso-PAF.

Subcellular Location:

Membrane.

Similarity:

Belongs to the neutral sphingomyelinase family.

SWISS:

O60906

Gene ID:

6610

Database links:

[Entrez Gene: 6610](#) Human

[Entrez Gene: 20598](#) Mouse

[Omim: 603498](#) Human

[SwissProt: O60906](#) Human

[SwissProt: O70572](#) Mouse

[SwissProt: Q8BW85](#) Mouse

[SwissProt: Q8C6H6](#) Mouse

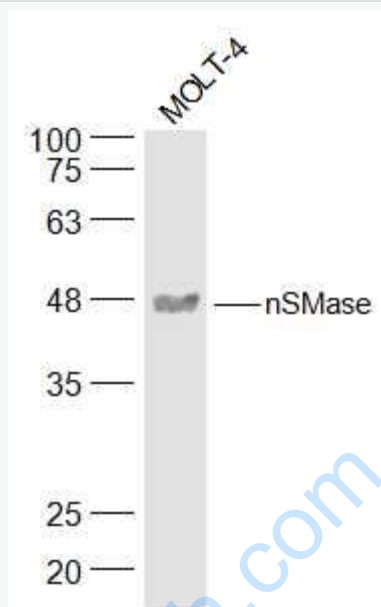
[Unigene: 55235](#) Human

[Unigene: 953](#) Mouse

Important Note:

This product as supplied is intended for research use only, not for use in human, therapeutic or diagnostic applications.

Picture:



Sample:

MOLT-4(Human) Cell Lysate at 30 ug

Primary: Anti-nSMase (SL19472R) at 1/500 dilution

Secondary: IRDye800CW Goat Anti-Rabbit IgG at 1/20000 dilution

Predicted band size: 47 kD

Observed band size: 47 kD