



## Rabbit Anti-NUDCD1 antibody

SL19506R

<b>Product Name:</b>	NUDCD1
<b>Chinese Name:</b>	Tumour抗原CML66抗体
<b>Alias:</b>	4921532K09Rik; AA407246; AW260430; AW556235; Chronic myelogenous leukemia tumor antigen 66; CML66; CML66 L; FLJ14991; NudC domain containing 1; NudC domain-containing protein 1; NUDC1_HUMAN; nudcd1; OVA66; RGD1310624; Tumor antigen CML66.
<b>Organism Species:</b>	Rabbit
<b>Clonality:</b>	Polyclonal
<b>React Species:</b>	Human,Mouse,Rat,Dog,Cow,Horse,Rabbit,Zebrafish,Sheep,
<b>Applications:</b>	WB=1:500-2000ELISA=1:500-1000IHC-P=1:400-800IHC-F=1:400-800ICC=1:100-500IF=1:100-500 (Paraffin sections need antigen repair) not yet tested in other applications. optimal dilutions/concentrations should be determined by the end user.
<b>Molecular weight:</b>	67kDa
<b>Cellular localization:</b>	The nucleus
<b>Form:</b>	Lyophilized or Liquid
<b>Concentration:</b>	1mg/ml
<b>immunogen:</b>	KLH conjugated synthetic peptide derived from human NUDCD1:431-530/583
<b>Lsotype:</b>	IgG
<b>Purification:</b>	affinity purified by Protein A
<b>Storage Buffer:</b>	0.01M TBS(pH7.4) with 1% BSA, 0.03% Proclin300 and 50% Glycerol.
<b>Storage:</b>	Store at -20 °C for one year. Avoid repeated freeze/thaw cycles. The lyophilized antibody is stable at room temperature for at least one month and for greater than a year when kept at -20°C. When reconstituted in sterile pH 7.4 0.01M PBS or diluent of antibody the antibody is stable for at least two weeks at 2-4 °C.
<b>PubMed:</b>	<a href="#">PubMed</a>
<b>Product Detail:</b>	The NUDCD1 gene encodes the 583 amino acid CML66 protein which demonstrates expression in a variety of solid tumor cell lines and leukemias. Expression of CML66 in normal tissues is restricted to testis and heart. The CML66 antibody is found in sera of 18-38% of patients with lung cancer, melanoma or prostate cancer. These findings

indicate that CML66 may be immunogenic in a wide variety of malignancies and may be a target for antigen-specific immunotherapy. A short isoform of CML66, designated CML66-S, is a product of alternative splicing. CML66-S has the same C-terminus as full-length CML66 (also designated CML66-L), but has a unique N-terminus. CML66-S shows predominant expression in testis, and is also expressed in very low levels in tumor cells, while CML66 is expressed in tumor cells and testis.

**Function:**

Isoform 1 is specifically expressed in leukemias and a variety of solid tumor cell lines and is also detected in testis and heart. Isoform 2 is predominantly expressed in testis and weakly expressed in tumor cells.

**Similarity:**

Contains 1 CS domain.

**SWISS:**

84955

**Gene ID:**

84955

**Database links:**

[Entrez Gene: 528425](#) Cow

[Entrez Gene: 475073](#) Dog

[Entrez Gene: 84955](#) Human

[Entrez Gene: 67429](#) Mouse

[Entrez Gene: 362906](#) Rat

[Omim: 606109](#) Human

[SwissProt: Q96RS6](#) Human

[SwissProt: Q6PIP5](#) Mouse

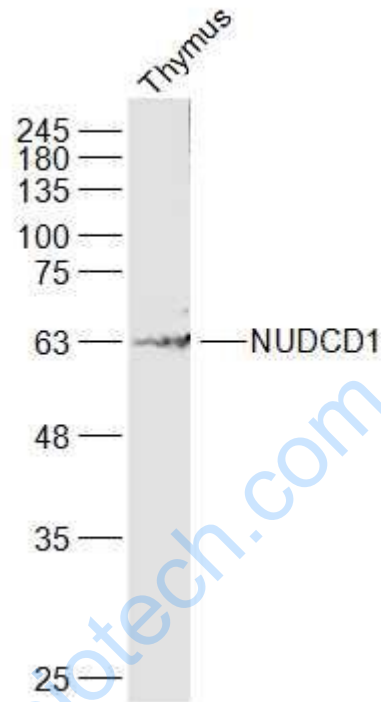
[Unigene: 380291](#) Human

[Unigene: 292021](#) Mouse

**Important Note:**

This product as supplied is intended for research use only, not for use in human, therapeutic or diagnostic applications.

Picture:



Sample:

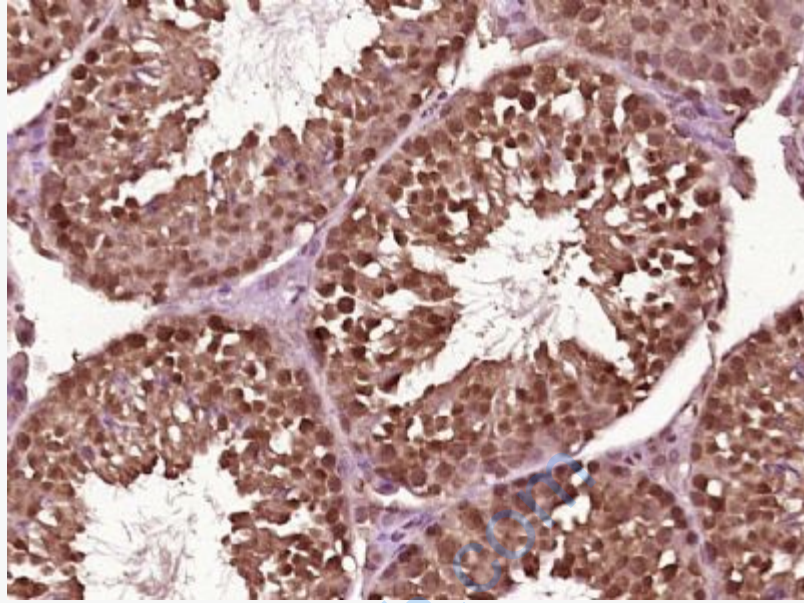
Thymus (Mouse) Lysate at 40 ug

Primary: Anti-NUDCD1 (SL19506R) at 1/1000 dilution

Secondary: IRDye800CW Goat Anti-Rabbit IgG at 1/20000 dilution

Predicted band size: 67 kD

Observed band size: 63 kD



Paraformaldehyde-fixed, paraffin embedded (mouse testis tissue); Antigen retrieval by boiling in sodium citrate buffer (pH6.0) for 15min; Block endogenous peroxidase by 3% hydrogen peroxide for 20 minutes; Blocking buffer (normal goat serum) at 37°C for 30min; Antibody incubation with (NUDCD1) Polyclonal Antibody, Unconjugated (SL19506R) at 1:400 overnight at 4°C, followed by operating according to SP Kit(Rabbit) (sp-0023) instructions and DAB staining.