



## Rabbit Anti-PU.1/Spi1 antibody

SL19594R

<b>Product Name:</b>	PU.1/Spi1
<b>Chinese Name:</b>	造血转录因子PU.1抗体
<b>Alias:</b>	31 kDa Transforming Protein; 31 kDa-transforming protein; Hematopoietic transcription factor PU.1; OF; PU.1; SFPI1; SPI 1 proto oncogene; SPI A; Spi1; SPI1_HUMAN; Spleen focus forming virus (SFFV) proviral integration oncogene spi1; Transcription factor PU.1.
<b>Organism Species:</b>	Rabbit
<b>Clonality:</b>	Polyclonal
<b>React Species:</b>	Human,Mouse,Rat,Pig,Cow,Horse,Sheep,
<b>Applications:</b>	WB=1:500-2000ELISA=1:500-1000IHC-P=1:400-800IHC-F=1:400-800ICC=1:100-500IF=1:100-500 (Paraffin sections need antigen repair) not yet tested in other applications. optimal dilutions/concentrations should be determined by the end user.
<b>Molecular weight:</b>	31kDa
<b>Cellular localization:</b>	The nucleus
<b>Form:</b>	Lyophilized or Liquid
<b>Concentration:</b>	1mg/ml
<b>immunogen:</b>	KLH conjugated synthetic peptide derived from human PU.1/Spi1:151-250/270
<b>Lsotype:</b>	IgG
<b>Purification:</b>	affinity purified by Protein A
<b>Storage Buffer:</b>	0.01M TBS(pH7.4) with 1% BSA, 0.03% Proclin300 and 50% Glycerol.
<b>Storage:</b>	Store at -20 °C for one year. Avoid repeated freeze/thaw cycles. The lyophilized antibody is stable at room temperature for at least one month and for greater than a year when kept at -20°C. When reconstituted in sterile pH 7.4 0.01M PBS or diluent of antibody the antibody is stable for at least two weeks at 2-4 °C.
<b>PubMed:</b>	<a href="#">PubMed</a>
<b>Product Detail:</b>	The enzyme encoded by this gene catalyzes the elimination of inorganic triphosphate from dihydroneopterin triphosphate, which is the second and irreversible step in the biosynthesis of tetrahydrobiopterin from GTP. Tetrahydrobiopterin, also known as BH(4), is an essential cofactor and regulator of various enzyme activities, including

enzymes involved in serotonin biosynthesis and NO synthase activity. Mutations in this gene result in hyperphenylalaninemia. [provided by RefSeq, Oct 2008]

**Function:**

Binds to the PU-box, a purine-rich DNA sequence (5'-GAGGAA-3') that can act as a lymphoid-specific enhancer. This protein is a transcriptional activator that may be specifically involved in the differentiation or activation of macrophages or B-cells. Also binds RNA and may modulate pre-mRNA splicing.

**Subunit:**

Binds DNA as a monomer. Interacts with CEBPD and NONO (By similarity). Interacts with RUNX1 and SPIB. Interacts with GFI1; the interaction represses SPI1 transcriptional activity.

**Subcellular Location:**

Nucleus.

**Similarity:**

Belongs to the ETS family.  
Contains 1 ETS DNA-binding domain.

**SWISS:**

P17947

**Gene ID:**

6688

**Database links:**

[Entrez Gene: 6688](#) Human

[Entrez Gene: 20375](#) Mouse

[Entrez Gene: 366126](#) Rat

[Omim: 165170](#) Human

[SwissProt: P17947](#) Human

[SwissProt: P17433](#) Mouse

[SwissProt: Q6BDS1](#) Rat

[Unigene: 502511](#) Human

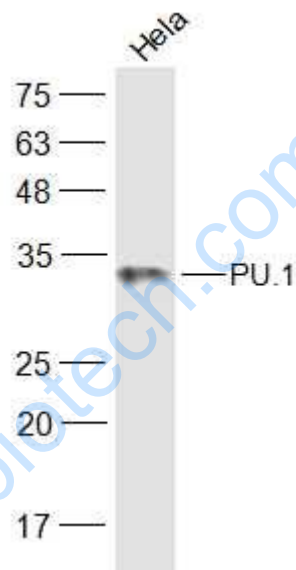
[Unigene: 1302](#) Mouse

[Unigene: 212982](#) Rat

**Important Note:**

This product as supplied is intended for research use only, not for use in human, therapeutic or diagnostic applications.

**Picture:**



Sample:

HeLa(Human) Cell Lysate at 30 ug

Primary: Anti-PU.1 (SL19594R) at 1/300 dilution

Secondary: IRDye800CW Goat Anti-Rabbit IgG at 1/20000 dilution

Predicted band size: 31 kD

Observed band size: 31 kD