



Rabbit Anti-SDHAF1 antibody

SL19603R

Product Name:	SDHAF1
Chinese Name:	琥珀酸脱氢酶的组合因子1抗体
Alias:	LYR motif containing 8; LYR motif-containing protein 8; LYRM8; mitochondrial; SDH assembly factor 1; SDHAF1; SDHF1_HUMAN; Succinate dehydrogenase assembly factor 1; Succinate dehydrogenase assembly factor 1 mitochondrial; Succinate dehydrogenase complex assembly factor 1.
Organism Species:	Rabbit
Clonality:	Polyclonal
React Species:	Human,Mouse,Rat,Dog,Pig,Cow,Horse,Sheep,
Applications:	WB=1:500-2000ELISA=1:500-1000IHC-P=1:400-800IHC-F=1:400-800ICC=1:100-500IF=1:100-500 (Paraffin sections need antigen repair) not yet tested in other applications. optimal dilutions/concentrations should be determined by the end user.
Molecular weight:	21kDa
Cellular localization:	cytoplasmicMitochondrion
Form:	Lyophilized or Liquid
Concentration:	1mg/ml
immunogen:	KLH conjugated synthetic peptide derived from human SDHAF1:1-100/115
Lsotype:	IgG
Purification:	affinity purified by Protein A
Storage Buffer:	0.01M TBS(pH7.4) with 1% BSA, 0.03% Proclin300 and 50% Glycerol.
Storage:	Store at -20 °C for one year. Avoid repeated freeze/thaw cycles. The lyophilized antibody is stable at room temperature for at least one month and for greater than a year when kept at -20°C. When reconstituted in sterile pH 7.4 0.01M PBS or diluent of antibody the antibody is stable for at least two weeks at 2-4 °C.
PubMed:	PubMed
Product Detail:	The succinate dehydrogenase (SDH) complex (or complex II) of the mitochondrial respiratory chain is composed of 4 individual subunits. The protein encoded by this gene resides in the mitochondria, and is essential for SDH assembly, but does not physically associate with the complex in vivo. Mutations in this gene are associated

with SDH-defective infantile leukoencephalopathy (mitochondrial complex II deficiency).[provided by RefSeq, Mar 2010]

Function:

Plays an essential role in succinate dehydrogenase complex (SDH) assembly, a complex involved in complex II of the mitochondrial electron transport chain. Probably acts by participating in mitochondrial biosynthesis of iron-sulfur centers for complex II.

Subcellular Location:

Mitochondrion matrix.

Tissue Specificity:

Ubiquitously expressed.

DISEASE:

Mitochondrial complex II deficiency

Similarity:

Belongs to the complex I LYR family. SDHAF1 subfamily.

SWISS:

A6NFY7

Gene ID:

644096

Database links:

[Entrez Gene: 644096](#) Human

[Entrez Gene: 68332](#) Mouse

[Entrez Gene: 100912030](#) Rat

[Entrez Gene: 499125](#) Rat

[Oimim: 612848](#) Human

[SwissProt: A6NFY7](#) Human

[SwissProt: Q3U276](#) Mouse

[SwissProt: B0K036](#) Rat

[Unigene: 356460](#) Human

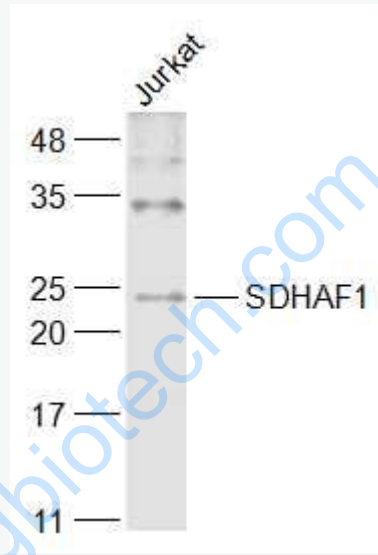
[Unigene: 6844](#) Mouse

[Unigene: 3527](#) Rat

Important Note:

This product as supplied is intended for research use only, not for use in human, therapeutic or diagnostic applications.

Picture:



Sample:

Jurkat(Human) Cell Lysate at 30 ug

Primary: Anti-SDHAF1 (SL19603R) at 1/1000 dilution

Secondary: IRDye800CW Goat Anti-Rabbit IgG at 1/20000 dilution

Predicted band size: 21 kD

Observed band size: 22 kD