



## Rabbit Anti-SEC61A antibody

SL19618R

|                               |  |
|-------------------------------|--|
| <b>Product Name:</b>          | SEC61A   |
| <b>Chinese Name:</b>          | TransporterSEC61A抗体  |
| <b>Alias:</b>                 | chunp6898; fb62c11; HSEC61; protein transport protein SEC61 alpha subunit; protein transport protein Sec61 subunit alpha; Protein transport protein Sec61 subunit alpha isoform 1; S61A1_HUMAN; SEC 61; SEC 61A; Sec61 alpha 1; Sec61 alpha 1 subunit; Sec61 alpha 1 subunit (S. cerevisiae); Sec61 alpha-1; SEC61; Sec61 homolog; SEC61A1; sec61aa. |
| <b>Organism Species:</b>      | Rabbit   |
| <b>Clonality:</b>             | Polyclonal   |
| <b>React Species:</b>         | Human,Mouse,Rat,Dog,Cow,   |
| <b>Applications:</b>          | WB=1:500-2000ELISA=1:500-1000IHC-P=1:400-800IHC-F=1:400-800ICC=1:100-500IF=1:100-500 (Paraffin sections need antigen repair)<br>not yet tested in other applications.<br>optimal dilutions/concentrations should be determined by the end user.  |
| <b>Molecular weight:</b>      | 52kDa  |
| <b>Cellular localization:</b> | cytoplasmic  |
| <b>Form:</b>                  | Lyophilized or Liquid  |
| <b>Concentration:</b>         | 1mg/ml   |
| <b>immunogen:</b>             | KLH conjugated synthetic peptide derived from human SEC61A:181-280/476   |
| <b>Lsotype:</b>               | IgG  |
| <b>Purification:</b>          | affinity purified by Protein A   |
| <b>Storage Buffer:</b>        | 0.01M TBS(pH7.4) with 1% BSA, 0.03% Proclin300 and 50% Glycerol.   |
| <b>Storage:</b>               | Store at -20 °C for one year. Avoid repeated freeze/thaw cycles. The lyophilized antibody is stable at room temperature for at least one month and for greater than a year when kept at -20°C. When reconstituted in sterile pH 7.4 0.01M PBS or diluent of antibody the antibody is stable for at least two weeks at 2-4 °C.                        |
| <b>PubMed:</b>                | <a href="#">PubMed</a>   |
| <b>Product Detail:</b>        | The protein encoded by this gene belongs to the SECY/SEC61- alpha family. It appears to play a crucial role in the insertion of secretory and membrane polypeptides into the endoplasmic reticulum. This protein found to be tightly associated with membrane-   |

bound ribosomes, either directly or through adaptor proteins. This gene encodes an alpha subunit of the heteromeric SEC61 complex, which also contains beta and gamma subunits. [provided by RefSeq, Jul 2008]

**Function:**

Plays a crucial role in the insertion of secretory and membrane polypeptides into the ER. Required for assembly of membrane and secretory proteins. Tightly associated with membrane-bound ribosomes, either directly or through adapter proteins.

**Subunit:**

Heterotrimeric complex composed of SEC61-alpha, SEC61-beta and SEC61-gamma.

**Subcellular Location:**

Endoplasmic reticulum membrane.

**Similarity:**

Belongs to the secY/SEC61-alpha family.

**SWISS:**

P61619

**Gene ID:**

29927

**Database links:**

[Entrez Gene: 29927](#) Human

[Entrez Gene: 505064](#) Cow

[Entrez Gene: 404006](#) Dog

[Entrez Gene: 53421](#) Mouse

[Entrez Gene: 80843](#) Rat

[Entrez Gene: 192298](#) Zebrafish

[Omim: 609213](#) Human

[SwissProt: Q5EA68](#) Cow

[SwissProt: P38377](#) Dog

[SwissProt: P61619](#) Human

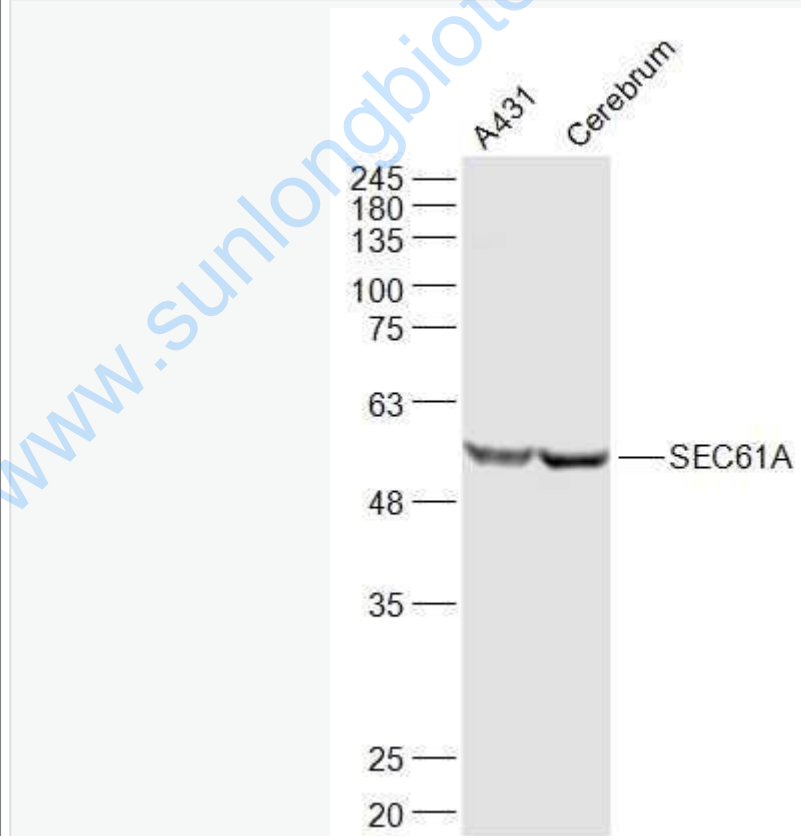
[SwissProt: P61620](#) Mouse

[SwissProt: P61621](#) Rat  
[SwissProt: Q90ZM2](#) Zebrafish  
[Unigene: 518236](#) Human  
[Unigene: 28375](#) Mouse  
[Unigene: 485032](#) Mouse  
[Unigene: 47029](#) Rat  
[Unigene: 51503](#) Zebrafish

**Important Note:**

This product as supplied is intended for research use only, not for use in human, therapeutic or diagnostic applications.

Picture:



Sample:

A431(Human) Cell Lysate at 30 ug

Cerebrum (Mouse) Lysate at 40 ug

Primary: Anti-SEC61A (SL19618R) at 1/1000 dilution

Secondary: IRDye800CW Goat Anti-Rabbit IgG at 1/20000 dilution

Predicted band size: 52 kD

Observed band size: 52 kD

[www.sunlongbiotech.com](http://www.sunlongbiotech.com)