



## Rabbit Anti-PADI3 / PAD3 antibody

SL19621R

<b>Product Name:</b>	PADI3 / PAD3
<b>Chinese Name:</b>	蛋白质精氨酸亚型3抗体
<b>Alias:</b>	HL-60 PAD; HPAD10; PAD; PAD4; PADI; PADI H protein; Padi4; PADI3_HUMAN; PADI5; PDI; PDI1; PDI2; PDI3; PDI4; PDI5; peptidyl arginine deiminase type I; peptidyl arginine deiminase type II; peptidyl arginine deiminase type III; peptidyl arginine deiminase type IV; peptidyl arginine deiminase type VI; Peptidyl arginine deiminase, type V; Peptidylarginine deiminase; Peptidylarginine deiminase IV; Peptidylarginine deiminase type VI; Protein-arginine deiminase type I; Protein-arginine deiminase type II; Protein-arginine deiminase type III; Protein-arginine deiminase type IV; Protein-arginine deiminase type-4.
<b>Organism Species:</b>	Rabbit
<b>Clonality:</b>	Polyclonal
<b>React Species:</b>	Human,Mouse,Rat,Pig,Cow,Horse,Rabbit,Sheep,
<b>Applications:</b>	WB=1:500-2000ELISA=1:500-1000IHC-P=1:400-800IHC-F=1:400-800ICC=1:100-500IF=1:100-500 (Paraffin sections need antigen repair) not yet tested in other applications. optimal dilutions/concentrations should be determined by the end user.
<b>Molecular weight:</b>	75kDa
<b>Cellular localization:</b>	cytoplasmic
<b>Form:</b>	Lyophilized or Liquid
<b>Concentration:</b>	1mg/ml
<b>immunogen:</b>	KLH conjugated synthetic peptide derived from human PADI3 / PAD3:1-100/664
<b>Lsotype:</b>	IgG
<b>Purification:</b>	affinity purified by Protein A
<b>Storage Buffer:</b>	0.01M TBS(pH7.4) with 1% BSA, 0.03% Proclin300 and 50% Glycerol.
<b>Storage:</b>	Store at -20 °C for one year. Avoid repeated freeze/thaw cycles. The lyophilized antibody is stable at room temperature for at least one month and for greater than a year when kept at -20°C. When reconstituted in sterile pH 7.4 0.01M PBS or diluent of antibody the antibody is stable for at least two weeks at 2-4 °C.
<b>PubMed:</b>	<a href="#">PubMed</a>

This gene encodes a member of the peptidyl arginine deiminase family of enzymes, which catalyze the post-translational deimination of proteins by converting arginine residues into citrullines in the presence of calcium ions. The family members have distinct substrate specificities and tissue-specific expression patterns. The type III enzyme modulates hair structural proteins, such as filaggrin in the hair follicle and trichohyalin in the inner root sheath, during hair follicle formation. Together with the type I enzyme, this enzyme may also play a role in terminal differentiation of the epidermis. This gene exists in a cluster with four other paralogous genes. [provided by RefSeq, Jul 2008]

**Function:**

Catalyzes the deimination of arginine residues of proteins.

**Subcellular Location:**

Cytoplasm.

**Tissue Specificity:**

Hair follicles, and epidermis at very low levels.

**Similarity:**

Belongs to the protein arginine deiminase family.

**SWISS:**

Q9ULW8

**Gene ID:**

51702

**Database links:**

[Entrez Gene: 51702](#) Human

[Entrez Gene: 18601](#) Mouse

[Entrez Gene: 29520](#) Rat

[Omim: 606755](#) Human

[SwissProt: Q9ULW8](#) Human

[SwissProt: Q9Z184](#) Mouse

[SwissProt: P70708](#) Rat

[Unigene: 149195](#) Human

[Unigene: 20851](#) Mouse

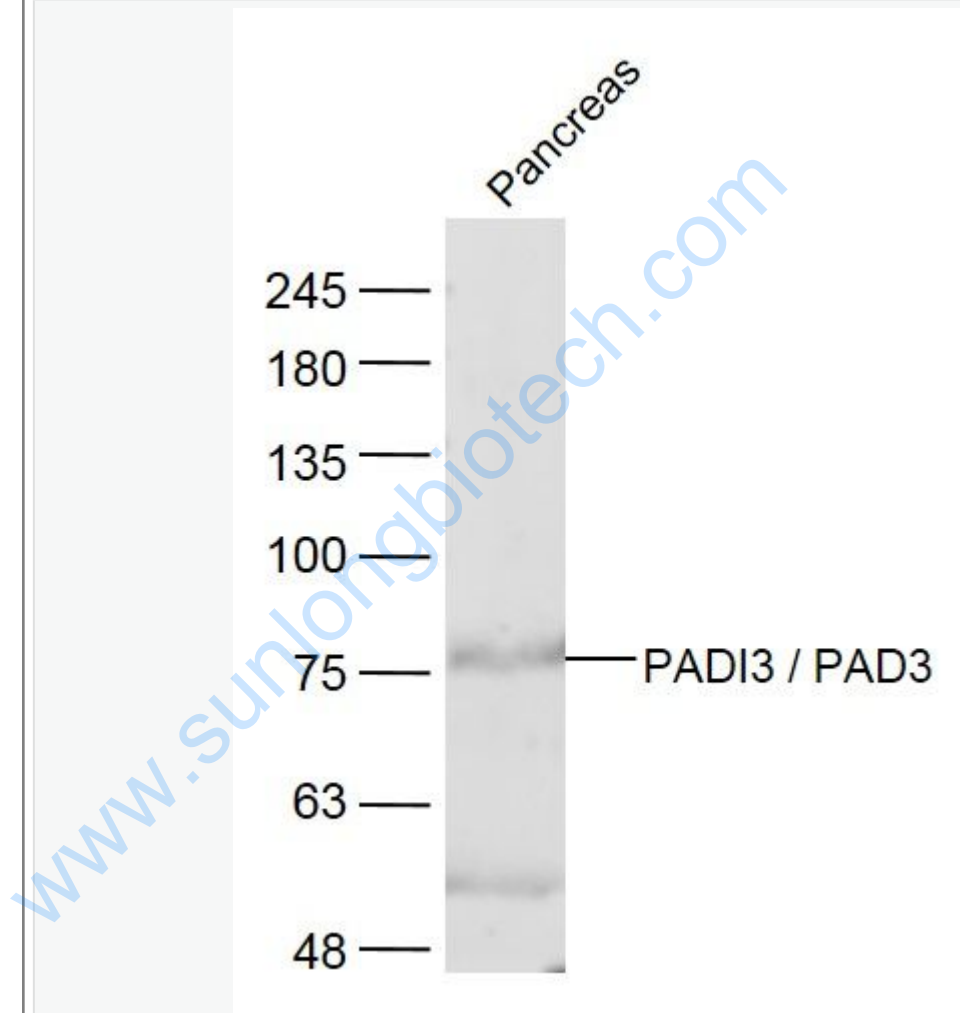
**Product Detail:**

[Unigene: 32094](#) Rat

**Important Note:**

This product as supplied is intended for research use only, not for use in human, therapeutic or diagnostic applications.

Picture:



Sample:

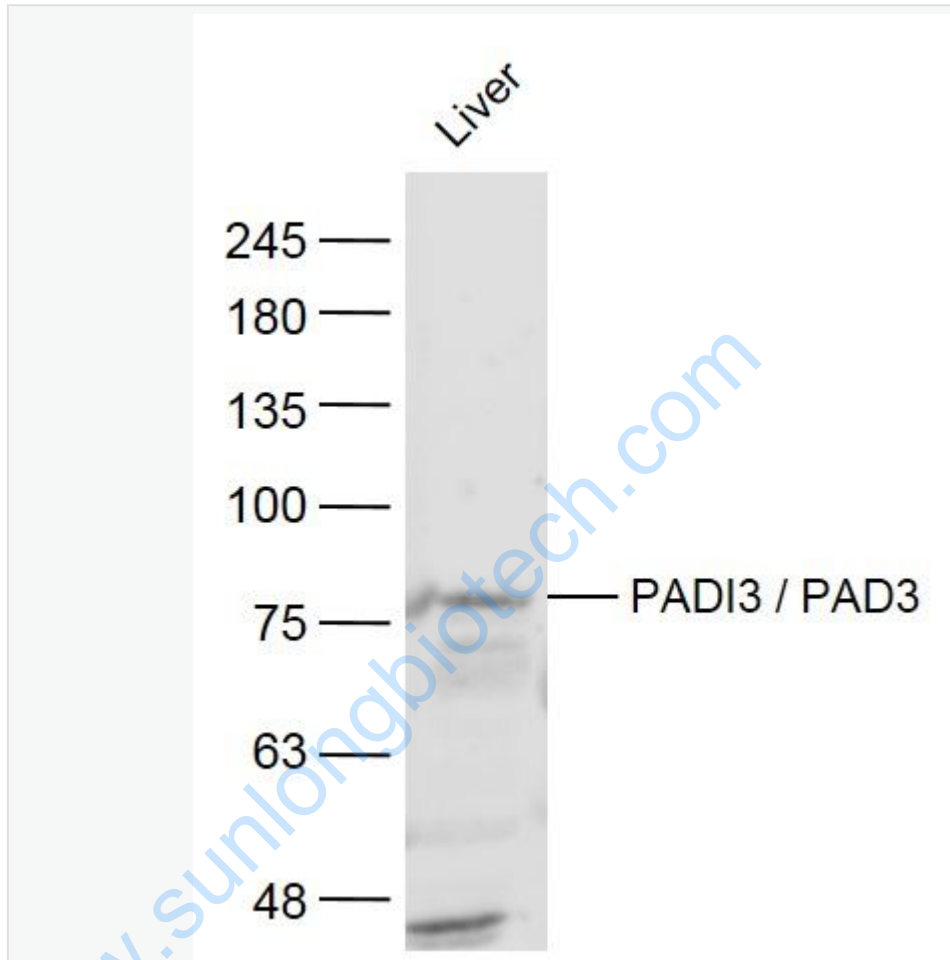
Pancreas (Mouse) Lysate at 40 ug

Primary: Anti-PADI3 / PAD3 (SL19621R) at 1/300 dilution

Secondary: IRDye800CW Goat Anti-Rabbit IgG at 1/20000 dilution

Predicted band size: 75 kD

Observed band size: 75 kD



Sample:

Liver (Mouse) Lysate at 40 ug

Primary: Anti-PADI3 / PAD3 (SL19621R) at 1/300 dilution

Secondary: IRDye800CW Goat Anti-Rabbit IgG at 1/20000 dilution

Predicted band size: 75 kD

Observed band size: 75 kD