



Rabbit Anti-SEN2 antibody

SL19632R

Product Name:	SEN2
Chinese Name:	Ubiquitin样蛋白特异性蛋白酶2抗体
Alias:	Axam2; DKFZp762A2316; KIAA1331; Senp2; SERP2; SENP2_HUMAN; Sentrin specific protease 2; Sentrin-specific protease 2; Sentrin/SUMO specific protease SENP2; Sentrin/SUMO-specific protease SENP2; SMT3 specific isopeptidase 2; SMT3-specific isopeptidase 2; Smt3ip2; SUMO1/sentrin/SMT3 specific peptidase 2.
Organism Species:	Rabbit
Clonality:	Polyclonal
React Species:	Human,Mouse,Rat,
Applications:	WB=1:500-2000ELISA=1:500-1000IHC-P=1:400-800IHC-F=1:400-800ICC=1:100-500IF=1:100-500 (Paraffin sections need antigen repair) not yet tested in other applications. optimal dilutions/concentrations should be determined by the end user.
Molecular weight:	68kDa
Cellular localization:	The nucleus
Form:	Lyophilized or Liquid
Concentration:	1mg/ml
immunogen:	KLH conjugated synthetic peptide derived from human SENP2:1-100/589
Lsotype:	IgG
Purification:	affinity purified by Protein A
Storage Buffer:	0.01M TBS(pH7.4) with 1% BSA, 0.03% Proclin300 and 50% Glycerol.
Storage:	Store at -20 °C for one year. Avoid repeated freeze/thaw cycles. The lyophilized antibody is stable at room temperature for at least one month and for greater than a year when kept at -20°C. When reconstituted in sterile pH 7.4 0.01M PBS or diluent of antibody the antibody is stable for at least two weeks at 2-4 °C.
PubMed:	PubMed
Product Detail:	SUMO1 (UBL1; MIM 601912) is a small ubiquitin-like protein that can be covalently conjugated to other proteins. SENP2 is one of a group of enzymes that process newly synthesized SUMO1 into the conjugatable form and catalyze the deconjugation of SUMO1-containing species.[supplied by OMIM, Apr 2004]

Function:

Protease that catalyzes two essential functions in the SUMO pathway: processing of full-length SUMO1, SUMO2 and SUMO3 to their mature forms and deconjugation of SUMO1, SUMO2 and SUMO3 from targeted proteins. May down-regulate CTNNB1 levels and thereby modulate the Wnt pathway.

Subcellular Location:

Nucleus > nuclear pore complex. Nucleus membrane. Cytoplasm. Shuttles between cytoplasm and nucleus.

Post-translational modifications:

Polyubiquitinated; which leads to proteasomal degradation.

Similarity:

Belongs to the peptidase C48 family.

SWISS:

Q9HC62

Gene ID:

59343

Database links:

[Entrez Gene: 59343](#) Human

[Entrez Gene: 75826](#) Mouse

[Entrez Gene: 78973](#) Rat

[Omid: 608261](#) Human

[SwissProt: Q9HC62](#) Human

[SwissProt: Q91ZX6](#) Mouse

[SwissProt: Q9EQE1](#) Rat

[Unigene: 401388](#) Human

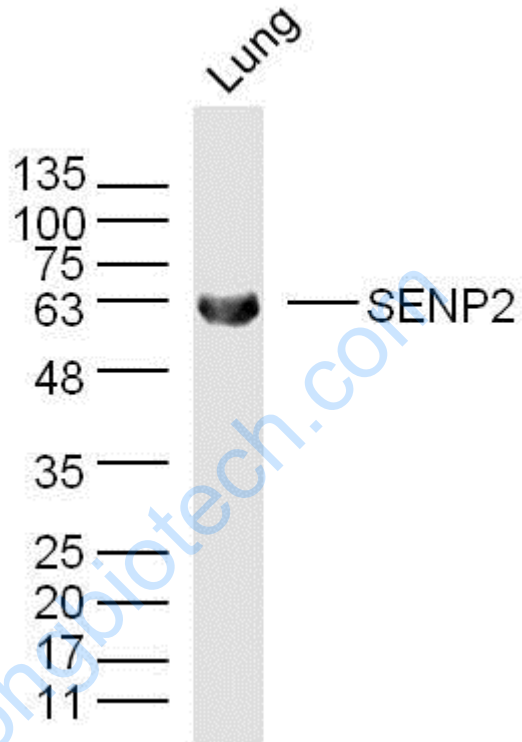
[Unigene: 297431](#) Mouse

[Unigene: 9367](#) Rat

Important Note:

This product as supplied is intended for research use only, not for use in human, therapeutic or diagnostic applications.

Picture:



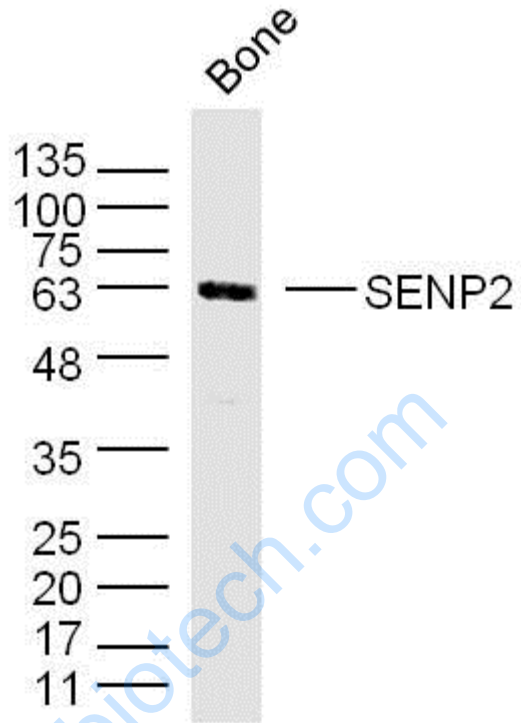
Protein: lung(mouse) lysate at 40ug;

Primary: rabbit Anti-SENP2(SL19632R) at 1:300;

Secondary: IRDye800CW Goat Anti-Rabbit IgG at 1/20000 dilution

Predicted band size: 68 kD

Observed band size: 63 kD



Protein: bone(mouse) lysate at 40ug;

Primary: rabbit Anti-SENP2(SL19632R) at 1:300;

Secondary: IRDye800CW Goat Anti-Rabbit IgG at 1/20000 dilution

Predicted band size: 68 kD

Observed band size: 63 kD