



## Rabbit Anti-OLFML2A antibody

SL19639R

<b>Product Name:</b>	OLFML2A
<b>Chinese Name:</b>	嗅介蛋白样蛋白2A抗体
<b>Alias:</b>	FLJ00237; Olfactomedin like 2A; Olfactomedin like protein 2A; OLM2A_HUMAN; Photomedin 1; PRO34319; UNQ9394/PRO34319.
<b>Organism Species:</b>	Rabbit
<b>Clonality:</b>	Polyclonal
<b>React Species:</b>	Human,Mouse,Rat,Chicken,Dog,Pig,Cow,Horse,Rabbit,Zebrafish,Guinea Pig,Cat,
<b>Applications:</b>	ELISA=1:500-1000IHC-P=1:400-800IHC-F=1:400-800ICC=1:100-500IF=1:100-500 (Paraffin sections need antigen repair) not yet tested in other applications. optimal dilutions/concentrations should be determined by the end user.
<b>Molecular weight:</b>	65kDa
<b>Cellular localization:</b>	Secretory protein
<b>Form:</b>	Lyophilized or Liquid
<b>Concentration:</b>	1mg/ml
<b>immunogen:</b>	KLH conjugated synthetic peptide derived from human OLFML2A:501-600/652
<b>Lsotype:</b>	IgG
<b>Purification:</b>	affinity purified by Protein A
<b>Storage Buffer:</b>	0.01M TBS(pH7.4) with 1% BSA, 0.03% Proclin300 and 50% Glycerol.
<b>Storage:</b>	Store at -20 °C for one year. Avoid repeated freeze/thaw cycles. The lyophilized antibody is stable at room temperature for at least one month and for greater than a year when kept at -20°C. When reconstituted in sterile pH 7.4 0.01M PBS or diluent of antibody the antibody is stable for at least two weeks at 2-4 °C.
<b>PubMed:</b>	<a href="#">PubMed</a>
<b>Product Detail:</b>	OLFML2A contains one olfactomedin-like domain. Its exact function is unknown. There are three named isoforms produced by alternative splicing. <b>Subunit:</b> Homodimer. Binds to heparin and chondroitin sulfate E.

**Subcellular Location:**

Secreted

**Tissue Specificity:**

In the kidney expressed only by podocytes, wherein they localize to major processes.

**DISEASE:**

Detected at the vesicle stage of developing glomeruli, expressed in invading endothelial cells in the glomerular cleft at the S-shaped stage and is later expressed only at the basal aspect of maturing podocytes.

**SWISS:**

Q68BL7

**Gene ID:**

169611

**Database links:**

[Entrez Gene: 169611](#) Human

[Entrez Gene: 241327](#) Mouse

[Entrez Gene: 296708](#) Rat

[SwissProt: Q68BL7](#) Human

[SwissProt: Q8BHP7](#) Mouse

[Unigene: 357004](#) Human

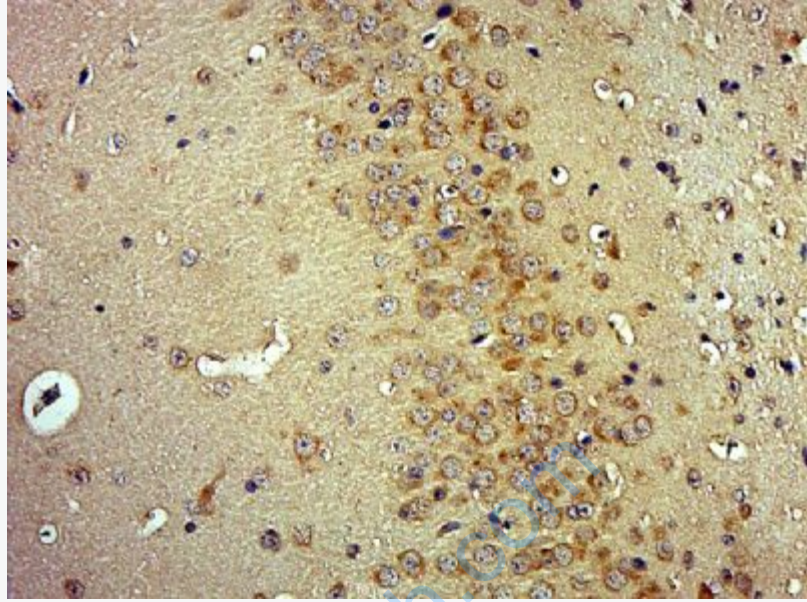
[Unigene: 103491](#) Mouse

[Unigene: 144357](#) Rat

**Important Note:**

This product as supplied is intended for research use only, not for use in human, therapeutic or diagnostic applications.

**Picture:**



Paraformaldehyde-fixed, paraffin embedded (Mouse brain); Antigen retrieval by boiling in sodium citrate buffer (pH6.0) for 15min; Block endogenous peroxidase by 3% hydrogen peroxide for 20 minutes; Blocking buffer (normal goat serum) at 37°C for 30min; Antibody incubation with (OLFML2A) Polyclonal Antibody, Unconjugated (SL19639R) at 1:500 overnight at 4°C, followed by a conjugated secondary (sp-0023) for 20 minutes and DAB staining.