

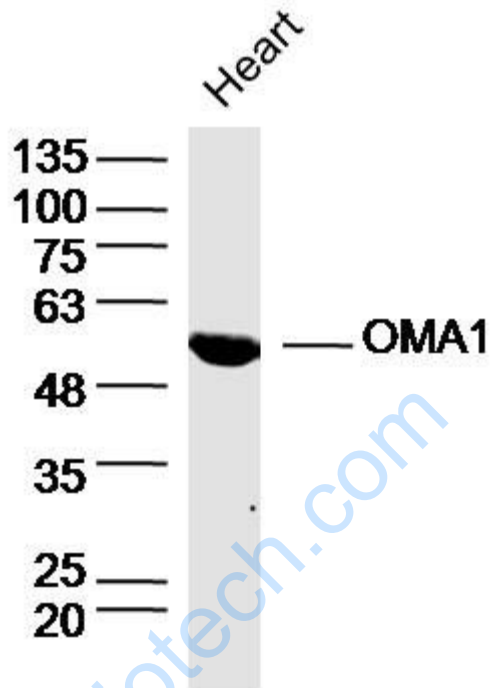


Rabbit Anti-OMA1 antibody

SL19641R

Product Name:	OMA1
Chinese Name:	金属蛋白酶相关蛋白1抗体
Alias:	2010001O09Rik; DAB1; FLJ33782; Metalloendopeptidase OMA1; Metalloendopeptidase OMA1, mitochondrial; Metalloprotease-related protein 1; mitochondrial; MPRP 1; MPRP-1; MPRP1; OMA1; OMA1 homolog zinc metallopeptidase; OMA1 homolog, zinc metallopeptidase (<i>S. cerevisiae</i>); OMA1 zinc metallopeptidase; OMA1 zinc metallopeptidase homolog; OMA1_HUMAN; Overlapping activity with M-AAA protease; Overlapping with the m-AAA protease 1 homolog; peptidase; YKR087C; Zinc metallopeptidase OMA1; ZMPOMA1.
Organism Species:	Rabbit
Clonality:	Polyclonal
React Species:	Human,Mouse,Rat,Chicken,Pig,Cow,Horse,Rabbit,Zebrafish,Cat,
Applications:	WB=1:500-2000ELISA=1:500-1000IHC-P=1:400-800IHC-F=1:400-800ICC=1:100-500IF=1:100-500 (Paraffin sections need antigen repair) not yet tested in other applications. optimal dilutions/concentrations should be determined by the end user.
Molecular weight:	60kDa
Cellular localization:	cytoplasmic
Form:	Lyophilized or Liquid
Concentration:	1mg/ml
immunogen:	KLH conjugated synthetic peptide derived from human OMA1:401-500/524
Lsotype:	IgG
Purification:	affinity purified by Protein A
Storage Buffer:	0.01M TBS(pH7.4) with 1% BSA, 0.03% Proclin300 and 50% Glycerol.
Storage:	Store at -20 °C for one year. Avoid repeated freeze/thaw cycles. The lyophilized antibody is stable at room temperature for at least one month and for greater than a year when kept at -20°C. When reconstituted in sterile pH 7.4 0.01M PBS or diluent of antibody the antibody is stable for at least two weeks at 2-4 °C.
PubMed:	PubMed
Product Detail:	

Picture:



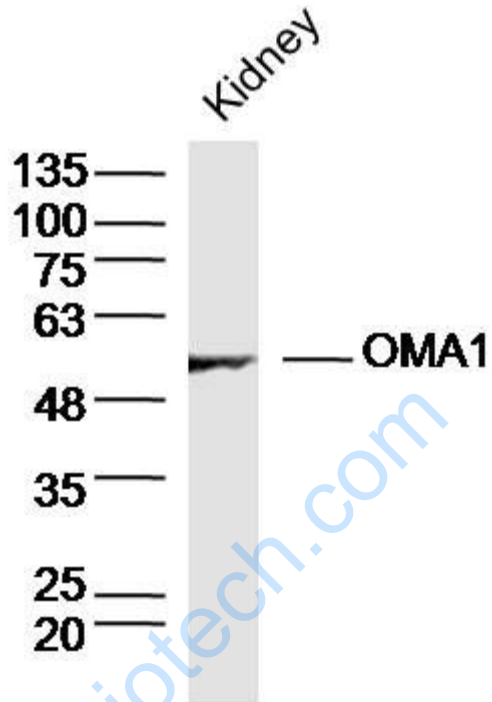
Sample: Heart (Rat) Lysate at 40 ug

Primary: Anti- OMA1 (SL19641R) at 1/300 dilution

Secondary: IRDye800CW Goat Anti-Rabbit IgG at 1/20000 dilution

Predicted band size: 60 kD

Observed band size: 55 kD



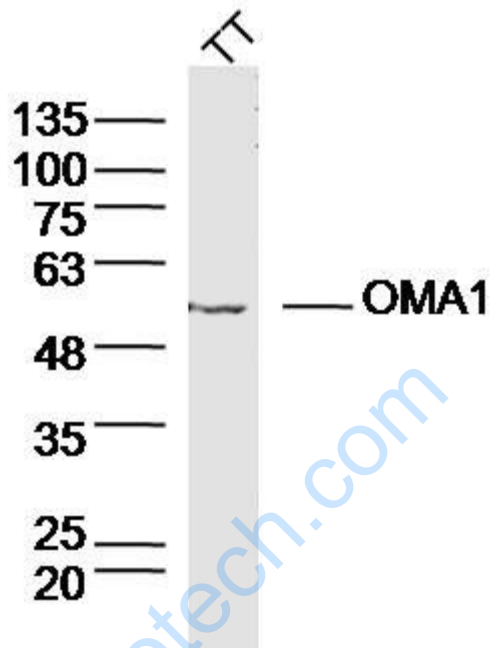
Sample: Kidney (Mouse) Lysate at 40 ug

Primary: Anti- OMA1 (SL19641R) at 1/300 dilution

Secondary: IRDye800CW Goat Anti-Rabbit IgG at 1/20000 dilution

Predicted band size: 60 kD

Observed band size: 55 kD



Sample:

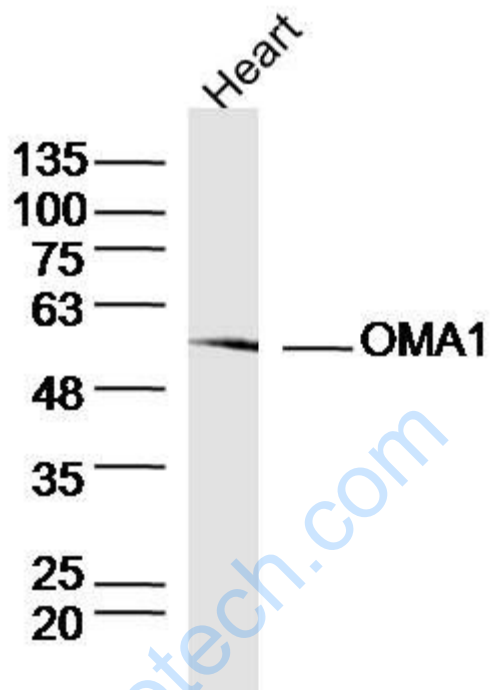
TT Cell (Human) Lysate at 40 ug

Primary: Anti- OMA1 (SL19641R) at 1/300 dilution

Secondary: IRDye800CW Goat Anti-Rabbit IgG at 1/20000 dilution

Predicted band size: 60 kD

Observed band size: 55 kD



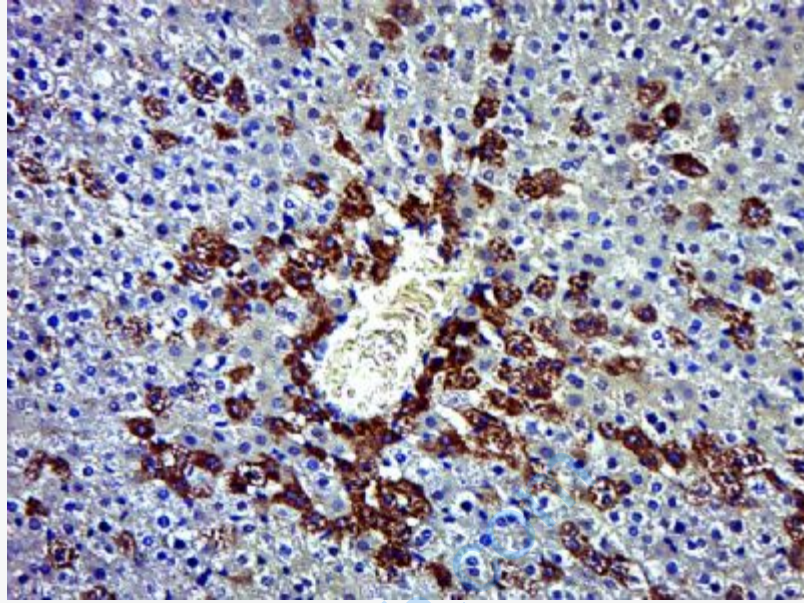
Sample: Heart (Mouse) Lysate at 40 ug

Primary: Anti- OMA1 (SL19641R) at 1/300 dilution

Secondary: IRDye800CW Goat Anti-Rabbit IgG at 1/20000 dilution

Predicted band size: 60 kD

Observed band size: 55 kD



Paraformaldehyde-fixed, paraffin embedded (Rat liver); Antigen retrieval by boiling in sodium citrate buffer (pH6.0) for 15min; Block endogenous peroxidase by 3% hydrogen peroxide for 20 minutes; Blocking buffer (normal goat serum) at 37°C for 30min; Antibody incubation with (OMA1) Polyclonal Antibody, Unconjugated (SL19641R) at 1:500 overnight at 4°C, followed by a conjugated secondary (sp-0023) for 20 minutes and DAB staining.