



Rabbit Anti-OMD/Osteomodulin antibody

SL19642R

Product Name:	OMD/Osteomodulin
Chinese Name:	Extracellular matrix蛋白OMD抗体
Alias:	Keratan sulfate proteoglycan osteomodulin; KSPG osteomodulin; OSAD; Osteoadherin; Osteoadherin proteoglycan; Osteomodulin; SLRR2C; OMD HUMAN.
Organism Species:	Rabbit
Clonality:	Polyclonal
React Species:	Human,Mouse,Rat,Dog,Pig,Cow,Horse,Rabbit,Guinea Pig,Cat,
Applications:	WB=1:500-2000ELISA=1:500-1000IHC-P=1:400-800IHC-F=1:400-800ICC=1:100-500IF=1:100-500 (Paraffin sections need antigen repair) not yet tested in other applications. optimal dilutions/concentrations should be determined by the end user.
Molecular weight:	49kDa
Cellular localization:	Secretory protein
Form:	Lyophilized or Liquid
Concentration:	1mg/ml
immunogen:	KLH conjugated synthetic peptide derived from human OMD/Osteomodulin:101-200/421
Lsotype:	IgG
Purification:	affinity purified by Protein A
Storage Buffer:	0.01M TBS(pH7.4) with 1% BSA, 0.03% Proclin300 and 50% Glycerol.
Storage:	Store at -20 °C for one year. Avoid repeated freeze/thaw cycles. The lyophilized antibody is stable at room temperature for at least one month and for greater than a year when kept at -20°C. When reconstituted in sterile pH 7.4 0.01M PBS or diluent of antibody the antibody is stable for at least two weeks at 2-4 °C.
PubMed:	PubMed
Product Detail:	OMD may be implicated in the biomineralization processes. It has a function in binding of osteoblasts via the alpha(V)beta(3)-integrin. Function: May be implicated in biomineralization processes. Has a function in binding of

osteoblasts via the alpha(V)beta(3)-integrin (By similarity).

Subunit:

Binds the alpha(V)beta(3)-integrin.

Subcellular Location:

Secreted, extracellular space, extracellular matrix.

Tissue Specificity:

Bone specific.

Post-translational modifications:

Binds keratan sulfate chains.

Similarity:

Belongs to the small leucine-rich proteoglycan (SLRP) family. SLRP class II subfamily.

SWISS:

Q99983

Gene ID:

4958

Database links:

[Entrez Gene: 280885](#) Cow

[Entrez Gene: 4958](#) Human

[Entrez Gene: 27047](#) Mouse

[Entrez Gene: 83717](#) Rat

[SwissProt: O77742](#) Cow

[SwissProt: Q99983](#) Human

[SwissProt: O35103](#) Mouse

[SwissProt: Q9Z1S7](#) Rat

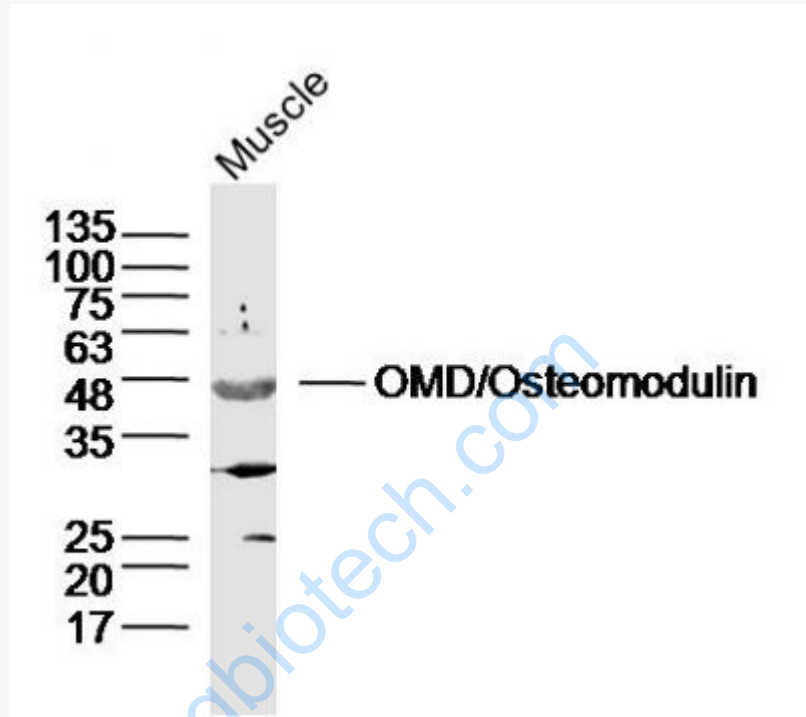
[Unigene: 94070](#) Human

[Unigene: 30124](#) Rat

Important Note:

This product as supplied is intended for research use only, not for use in human, therapeutic or diagnostic applications.

Picture:



Sample: Muscle(Mouse) Lysate at 40 ug

Primary: Anti-OMD/Osteomodulin(SL19642R) at 1/300 dilution

Secondary: IRDye800CW Goat Anti-RabbitIgG at 1/20000 dilution

Predicted band size: 49kD

Observed band size: 49kD