



## Rabbit Anti-ONECUT2 antibody

SL19643R

<b>Product Name:</b>	ONECUT2
<b>Chinese Name:</b>	转录因子ONECUT2抗体
<b>Alias:</b>	HGNC:8139; MGC120377; MGC120378; OC 2; OC2; one cut domain family member 2; ONECUT 2; ONECUT 2 homeodomain transcription factor; ONECUT 2 protein; ONECUT2 homeodomain transcription factor; ONECUT2 protein; Transcription factor ONECUT 2; Transcription factor ONECUT2.
<b>Organism Species:</b>	Rabbit
<b>Clonality:</b>	Polyclonal
<b>React Species:</b>	Human,Mouse,Rat,
<b>Applications:</b>	WB=1:500-2000ELISA=1:500-1000IHC-P=1:400-800IHC-F=1:400-800ICC=1:100-500IF=1:100-500 (Paraffin sections need antigen repair) not yet tested in other applications. optimal dilutions/concentrations should be determined by the end user.
<b>Molecular weight:</b>	52kDa
<b>Cellular localization:</b>	The nucleus
<b>Form:</b>	Lyophilized or Liquid
<b>Concentration:</b>	1mg/ml
<b>immunogen:</b>	KLH conjugated synthetic peptide derived from human ONECUT2:401-504/504
<b>Lsotype:</b>	IgG
<b>Purification:</b>	affinity purified by Protein A
<b>Storage Buffer:</b>	0.01M TBS(pH7.4) with 1% BSA, 0.03% Proclin300 and 50% Glycerol.
<b>Storage:</b>	Store at -20 °C for one year. Avoid repeated freeze/thaw cycles. The lyophilized antibody is stable at room temperature for at least one month and for greater than a year when kept at -20°C. When reconstituted in sterile pH 7.4 0.01M PBS or diluent of antibody the antibody is stable for at least two weeks at 2-4 °C.
<b>PubMed:</b>	<a href="#">PubMed</a>
<b>Product Detail:</b>	This gene encodes a member of the onecut family of transcription factors, which are characterized by a cut domain and an atypical homeodomain. The protein binds to specific DNA sequences and stimulates expression of target genes, including genes involved in melanocyte and hepatocyte differentiation. [provided by RefSeq, Jul 2008]

**Function:**

Transcriptional activator. Activates the transcription of a number of liver genes such as HNF3B.

**Subcellular Location:**

Nuclear

**Similarity:**

Belongs to the CUT homeobox family.

**SWISS:**

O95948

**Gene ID:**

9480

**Database links:**

[Entrez Gene: 9480](#) Human

[Entrez Gene: 225631](#) Mouse

[Entrez Gene: 307376](#) Rat

[Omim: 604894](#) Human

[SwissProt: O95948](#) Human

[SwissProt: Q6XBJ3](#) Mouse

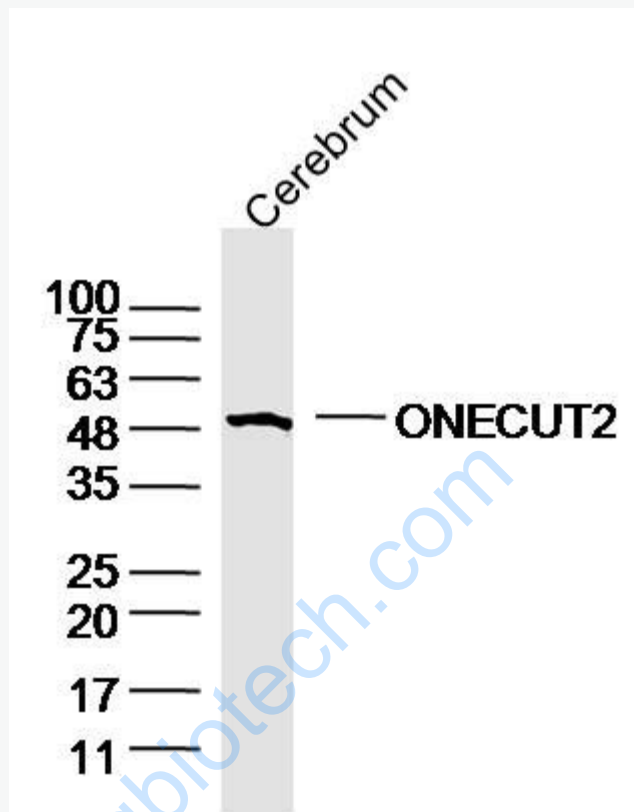
[Unigene: 194725](#) Human

[Unigene: 118978](#) Mouse

**Important Note:**

This product as supplied is intended for research use only, not for use in human, therapeutic or diagnostic applications.

Picture:



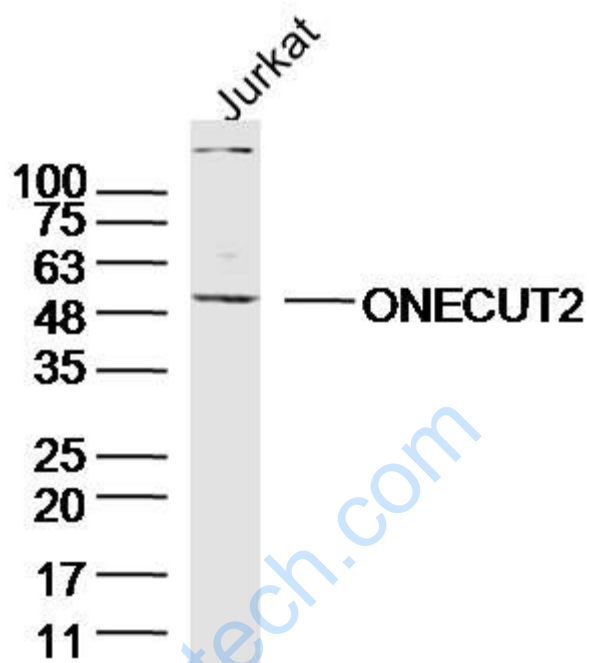
Sample: Cerebrum (Mouse) Lysate at 40 ug

Primary: Anti-ONECUT2 (SL19643R) at 1/300 dilution

Secondary: IRDye800CW Goat Anti-Rabbit IgG at 1/20000 dilution

Predicted band size: 52 kD

Observed band size: 52 kD



Sample: Jurkat(human) Cell Lysate at 40 ug

Primary: Anti-ONECUT2 (SL19643R) at 1/300 dilution

Secondary: IRDye800CW Goat Anti-Rabbit IgG at 1/20000 dilution

Predicted band size: 52 kD

Observed band size: 52 kD