



Rabbit Anti-ONECUT3 antibody

SL19644R

Product Name:	ONECUT3
Chinese Name:	转录因子ONECUT3抗体
Alias:	OC 3; OC-3; OC3; One cut domain family member 3; One cut homeobox 3; ONEC3_HUMAN; ONECUT 3; Onecut3; Transcription factor ONECUT 3; Transcription factor ONECUT-3; Transcription factor ONECUT3.
Organism Species:	Rabbit
Clonality:	Polyclonal
React Species:	Human,Mouse,Rat,Chicken,Pig,Cow,Horse,
Applications:	WB=1:500-2000ELISA=1:500-1000IHC-P=1:400-800IHC-F=1:400-800ICC=1:100-500IF=1:100-500 (Paraffin sections need antigen repair) not yet tested in other applications. optimal dilutions/concentrations should be determined by the end user.
Molecular weight:	50kDa
Cellular localization:	The nucleus
Form:	Lyophilized or Liquid
Concentration:	1mg/ml
immunogen:	KLH conjugated synthetic peptide derived from human ONECUT3:351-450/494
Lsotype:	IgG
Purification:	affinity purified by Protein A
Storage Buffer:	0.01M TBS(pH7.4) with 1% BSA, 0.03% Proclin300 and 50% Glycerol.
Storage:	Store at -20 °C for one year. Avoid repeated freeze/thaw cycles. The lyophilized antibody is stable at room temperature for at least one month and for greater than a year when kept at -20°C. When reconstituted in sterile pH 7.4 0.01M PBS or diluent of antibody the antibody is stable for at least two weeks at 2-4 °C.
PubMed:	PubMed
Product Detail:	Transcriptional activator. Binds the consensus DNA sequence 5'-DHWATTGAYTWWD-3' on a variety of gene promoters such as those of HNF3B and TTR.
	Subcellular Location:

Nucleus.

Tissue Specificity:

Specifically expressed in brain, stomach and gut. Within the gut, expressed only in duodenum and jejunum.

Similarity:

Contains 1 CUT DNA-binding domain.

Contains 1 homeobox DNA-binding domain.

SWISS:

O60422

Gene ID:

390874

Database links:

[Entrez Gene: 612249](#) Dog

[Entrez Gene: 390874](#) Human

[Entrez Gene: 246086](#) Mouse

[Entrez Gene: 366829](#) Rat

[Omim: 611294](#) Human

[SwissProt: O60422](#) Human

[SwissProt: Q8K557](#) Mouse

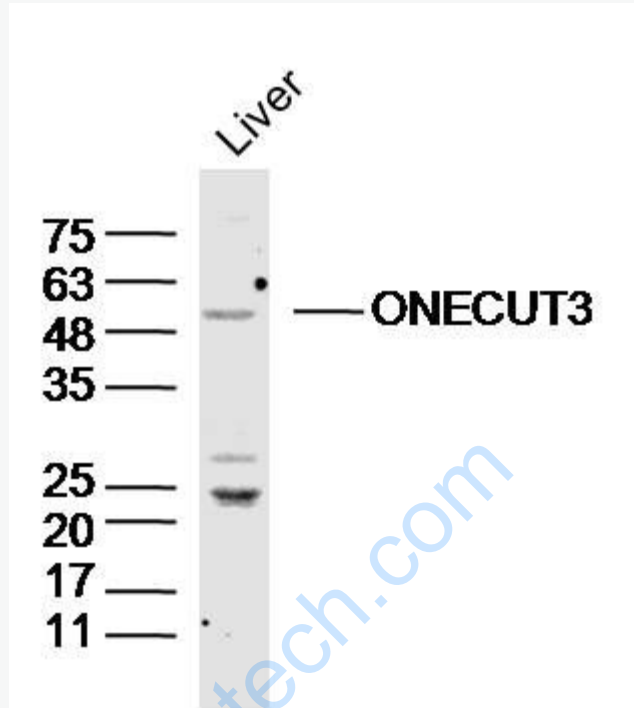
[Unigene: 654347](#) Human

[Unigene: 250572](#) Mouse

Important Note:

This product as supplied is intended for research use only, not for use in human, therapeutic or diagnostic applications.

Picture:



Sample: Liver (Mouse) Lysate at 40 ug

Primary: Anti-ONECUT3 (SL19644R) at 1/300 dilution

Secondary: IRDye800CW Goat Anti-Rabbit IgG at 1/20000 dilution

Predicted band size: 50 kD

Observed band size: 50 kD