



Rabbit Anti-OR11L1 antibody

SL19651R

Product Name:	OR11L1
Chinese Name:	嗅觉感受器蛋白11L1抗体
Alias:	O11L1_HUMAN; Olfactory receptor 11L1; Olfactory receptor family 11 subfamily L member 1; Olfactory receptor OR1-50; OR11L1.
Organism Species:	Rabbit
Clonality:	Polyclonal
React Species:	Human,
Applications:	WB=1:500-2000ELISA=1:500-1000IHC-P=1:400-800IHC-F=1:400-800ICC=1:100-500IF=1:100-500 (Paraffin sections need antigen repair) not yet tested in other applications. optimal dilutions/concentrations should be determined by the end user.
Molecular weight:	37kDa
Cellular localization:	The cell membrane
Form:	Lyophilized or Liquid
Concentration:	1mg/ml
immunogen:	KLH conjugated synthetic peptide derived from human OR11L1:121-200/322<Extracellular>
Lsotype:	IgG
Purification:	affinity purified by Protein A
Storage Buffer:	0.01M TBS(pH7.4) with 1% BSA, 0.03% Proclin300 and 50% Glycerol.
Storage:	Store at -20 °C for one year. Avoid repeated freeze/thaw cycles. The lyophilized antibody is stable at room temperature for at least one month and for greater than a year when kept at -20°C. When reconstituted in sterile pH 7.4 0.01M PBS or diluent of antibody the antibody is stable for at least two weeks at 2-4 °C.
PubMed:	PubMed
Product Detail:	Olfactory receptors interact with odorant molecules in the nose, to initiate a neuronal response that triggers the perception of a smell. The olfactory receptor proteins are members of a large family of G-protein-coupled receptors (GPCR) arising from single coding-exon genes. Olfactory receptors share a 7-transmembrane domain structure with many neurotransmitter and hormone receptors and are responsible for the recognition

and G protein-mediated transduction of odorant signals. The olfactory receptor gene family is the largest in the genome. The nomenclature assigned to the olfactory receptor genes and proteins for this organism is independent of other organisms. [provided by RefSeq, Jul 2008]

Function:

Odorant receptor.

Subcellular Location:

Cell membrane.

Similarity:

Belongs to the G-protein coupled receptor 1 family.

SWISS:

Q8NGX0

Gene ID:

391189

Database links:

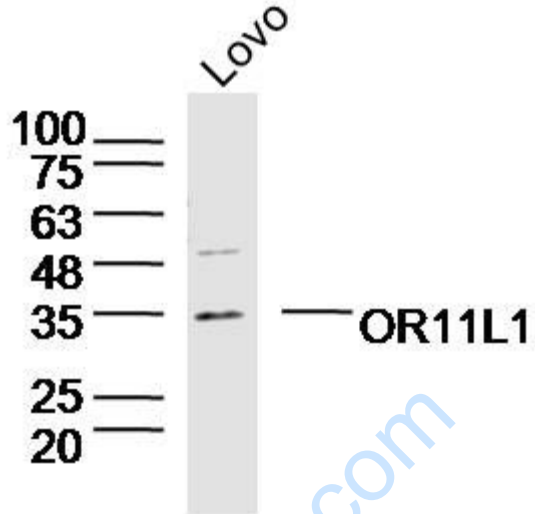
[Entrez Gene: 391189](#) Human

[SwissProt: Q8NGX0](#) Human

[Unigene: 553781](#) Human

Important Note:

This product as supplied is intended for research use only, not for use in human, therapeutic or diagnostic applications.



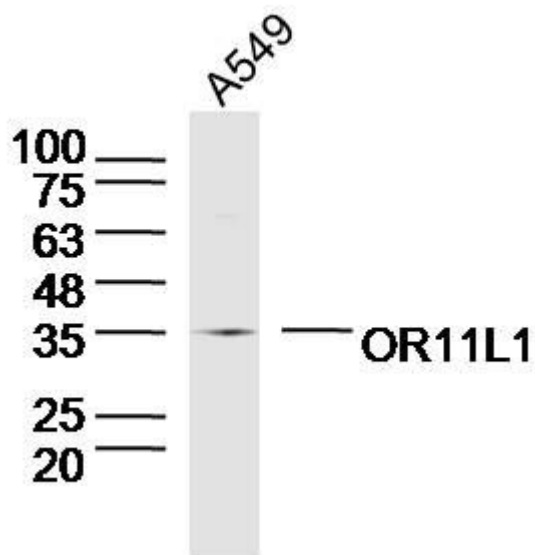
Sample: Lovo Cell (Human) Lysate at 40 ug

Primary: Anti-OR11L1(SL19651R) at 1/300 dilution

Secondary: IRDye800CW Goat Anti-Rabbit IgG at 1/20000 dilution

Predicted band size: 37kD

Observed band size: 35kD



Sample: A549 Cell (Human) Lysate at 40 ug

Primary: Anti-OR11L1(SL19651R)at 1/300 dilution

Secondary: IRDye800CW Goat Anti-Rabbit IgG at 1/20000 dilution

Predicted band size: 37kD

Observed band size: 35kD

www.sunlongbiotech.com