



Rabbit Anti-SERCA3 antibody

SL19653R

Product Name:	SERCA3
Chinese Name:	肌浆/内质网钙ATP酶3抗体
Alias:	Adenosine triphosphatase calcium; AT2A3_HUMAN; Atp2a3; ATPase Ca(2+) transporting ubiquitous; ATPase Ca ⁺⁺ transporting ubiquitous; Calcium pump 3; Calcium translocating P type ATPase; Sarco/endoplasmic reticulum Ca ²⁺ ATPase; Sarcoplasmic/endoplasmic reticulum calcium ATPase 3; SERCA 3; SERCA3; SERCA3b; SR Ca(2+) ATPase 3; SR Ca(2+)-ATPase 3.
Organism Species:	Rabbit
Clonality:	Polyclonal
React Species:	Human,Mouse,Chicken,Cow,Xenopus laevis, Xenopus tropicalis
Applications:	WB=1:500-2000ELISA=1:500-1000IHC-P=1:400-800IHC-F=1:400-800ICC=1:100-500IF=1:100-500 (Paraffin sections need antigen repair) not yet tested in other applications. optimal dilutions/concentrations should be determined by the end user.
Molecular weight:	114kDa
Cellular localization:	The nucleus
Form:	Lyophilized or Liquid
Concentration:	1mg/ml
immunogen:	KLH conjugated synthetic peptide derived from human SERCA3:101-200/1043
Lsotype:	IgG
Purification:	affinity purified by Protein A
Storage Buffer:	0.01M TBS(pH7.4) with 1% BSA, 0.03% Proclin300 and 50% Glycerol.
Storage:	Store at -20 °C for one year. Avoid repeated freeze/thaw cycles. The lyophilized antibody is stable at room temperature for at least one month and for greater than a year when kept at -20°C. When reconstituted in sterile pH 7.4 0.01M PBS or diluent of antibody the antibody is stable for at least two weeks at 2-4 °C.
PubMed:	PubMed
Product Detail:	This gene encodes one of the SERCA Ca(2+)-ATPases, which are intracellular pumps located in the sarcoplasmic or endoplasmic reticula of muscle cells. This enzyme catalyzes the hydrolysis of ATP coupled with the translocation of calcium from the

cytosol to the sarcoplasmic reticulum lumen, and is involved in calcium sequestration associated with muscular excitation and contraction. Alternative splicing results in multiple transcript variants encoding different isoforms. [provided by RefSeq, Jul 2008]

Function:

This magnesium-dependent enzyme catalyzes the hydrolysis of ATP coupled with the transport of calcium. Transports calcium ions from the cytosol into the sarcoplasmic/endoplasmic reticulum lumen. Contributes to calcium sequestration involved in muscular excitation/contraction.

Subcellular Location:

Nucleus membrane. Endoplasmic reticulum membrane. Sarcoplasmic reticulum membrane.

Tissue Specificity:

Found in most tissues. Most abundant in thymus, trachea, salivary gland, spleen, bone marrow, lymph node, peripheral leukocytes, pancreas and colon. Also detected in fetal tissues.

Similarity:

Belongs to the cation transport ATPase (P-type) (TC 3.A.3) family. Type IIA subfamily.

SWISS:

Q93084

Gene ID:

489

Database links:

[Entrez Gene: 395707](#) Chicken

[Entrez Gene: 512313](#) Cow

[Entrez Gene: 489](#) Human

[Entrez Gene: 53313](#) Mouse

[Entrez Gene: 25391](#) Rat

[Entrez Gene: 495440](#) Xenopus laevis

[Entrez Gene: 779786](#) Xenopus tropicalis

[Omim: 601929](#) Human

[SwissProt: Q9YGL9](#) Chicken

[SwissProt: Q93084](#) Human

[SwissProt: Q64518](#) Mouse

[SwissProt: P18596](#) Rat

[Unigene: 513870](#) Human

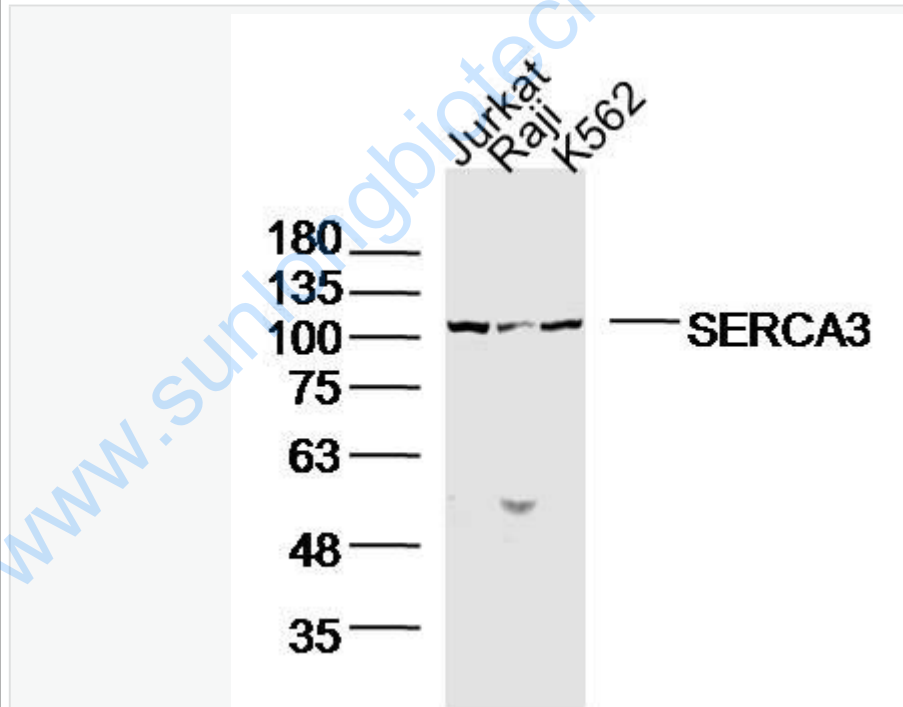
[Unigene: 6306](#) Mouse

[Unigene: 9920](#) Rat

Important Note:

This product as supplied is intended for research use only, not for use in human, therapeutic or diagnostic applications.

Picture:



Sample:

Jurkat Cell (Human) Lysate at 40 ug

RajiCell (Human) Lysate at 40 ug

K562 Cell (Human) Lysate at 40 ug

Primary: Anti-SERCA3(SL19653R)at 1/300 dilution

Secondary: IRDye800CW Goat Anti-Rabbit IgG at 1/20000 dilution

Predicted band size: 114kD

Observed band size: 114kD

www.sunlongbiotech.com