

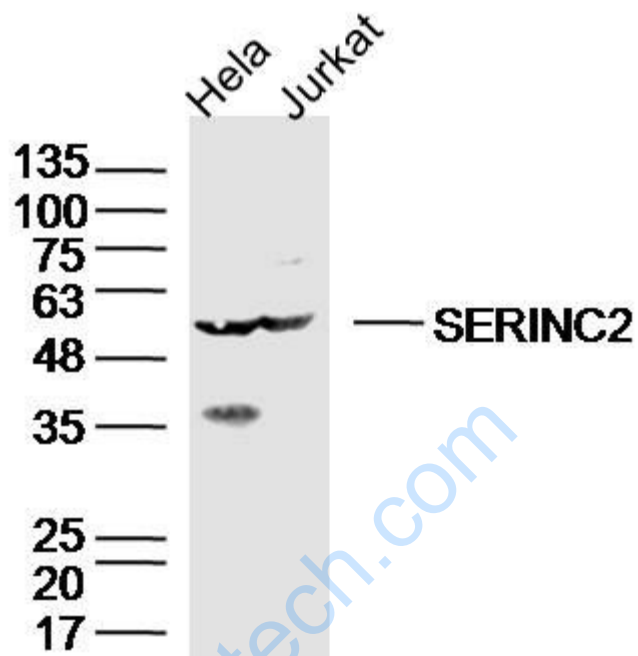


Rabbit Anti-SERINC2 antibody

SL19656R

Product Name:	SERINC2
Chinese Name:	丝氨酸组合因子2抗体
Alias:	AW121759; FKSG84; MGC116219; MGC90340; PRO0899; RP23 12J1.7; SERC2_HUMAN; Serinc2; serine incorporator 2; TDE2; TDE2L; Tumor differentially expressed 2 like; Tumor differentially expressed protein 2; Tumor differentially expressed protein 2-like; UNQ263/PRO300.
Organism Species:	Rabbit
Clonality:	Polyclonal
React Species:	Human,Mouse,Rat,
Applications:	WB=1:500-2000ELISA=1:500-1000IHC-P=1:400-800IHC-F=1:400-800ICC=1:100-500IF=1:100-500 (Paraffin sections need antigen repair) not yet tested in other applications. optimal dilutions/concentrations should be determined by the end user.
Molecular weight:	51kDa
Cellular localization:	The cell membrane
Form:	Lyophilized or Liquid
Concentration:	1mg/ml
immunogen:	KLH conjugated synthetic peptide derived from human SERINC2:301-400/455
Lsotype:	IgG
Purification:	affinity purified by Protein A
Storage Buffer:	0.01M TBS(pH7.4) with 1% BSA, 0.03% Proclin300 and 50% Glycerol.
Storage:	Store at -20 °C for one year. Avoid repeated freeze/thaw cycles. The lyophilized antibody is stable at room temperature for at least one month and for greater than a year when kept at -20°C. When reconstituted in sterile pH 7.4 0.01M PBS or diluent of antibody the antibody is stable for at least two weeks at 2-4 °C.
PubMed:	PubMed
Product Detail:	

Picture:



Sample:

HeLa(human) Cell Lysate at 40 ug

Jurkat(human) Cell Lysate at 40 ug

Primary: Anti-SERINC2 (SL19656R) at 1/300 dilution

Secondary: IRDye800CW Goat Anti-Rabbit IgG at 1/20000 dilution

Predicted band size: 51 kD

Observed band size: 51 kD