



Rabbit Anti-SerpinB8 antibody

SL19660R

Product Name:	SerpinB8
Chinese Name:	丝氨酸蛋白酶抑制剂B8抗体
Alias:	CAP 2; CAP-2; CAP2; Cytoplasmic antiproteinase 2; OTTHUMP00000067000; OTTHUMP00000067001; Peptidase inhibitor 8; PI 8; PI-8; PI8; Protease inhibitor 8 (ovalbumin type); Serine (or cysteine) proteinase inhibitor clade B (ovalbumin) member 8; Serpin B8; Serpin peptidase inhibitor clade B (ovalbumin) member 8; Serpin8; SPB8 HUMAN.
Organism Species:	Rabbit
Clonality:	Polyclonal
React Species:	Human,Mouse,Rat,Dog,Cow,Horse,Rabbit,Guinea Pig,Cat,
Applications:	WB=1:500-2000ELISA=1:500-1000IHC-P=1:400-800IHC-F=1:400-800ICC=1:100-500IF=1:100-500 (Paraffin sections need antigen repair) not yet tested in other applications. optimal dilutions/concentrations should be determined by the end user.
Molecular weight:	43kDa
Cellular localization:	cytoplasmic
Form:	Lyophilized or Liquid
Concentration:	1mg/ml
immunogen:	KLH conjugated synthetic peptide derived from human SerpinB8:121-220/374
Lsotype:	IgG
Purification:	affinity purified by Protein A
Storage Buffer:	0.01M TBS(pH7.4) with 1% BSA, 0.03% Proclin300 and 50% Glycerol.
Storage:	Store at -20 °C for one year. Avoid repeated freeze/thaw cycles. The lyophilized antibody is stable at room temperature for at least one month and for greater than a year when kept at -20°C. When reconstituted in sterile pH 7.4 0.01M PBS or diluent of antibody the antibody is stable for at least two weeks at 2-4 °C.
PubMed:	PubMed
Product Detail:	The superfamily of high molecular weight serine proteinase inhibitors (serpins) regulate a diverse set of intracellular and extracellular processes such as complement activation, fibrinolysis, coagulation, cellular differentiation, tumor suppression, apoptosis, and cell

migration. Serpins are characterized by well-conserved a tertiary structure that consists of 3 beta sheets and 8 or 9 alpha helices (Huber and Carrell, 1989 [PubMed 2690952]). A critical portion of the molecule, the reactive center loop connects beta sheets A and C. Protease inhibitor-8 (PI8; SERPINB8) is a member of the ov-serpin subfamily, which, relative to the archetypal serpin PI1 (MIM 107400), is characterized by a high degree of homology to chicken ovalbumin, lack of N- and C-terminal extensions, absence of a signal peptide, and a serine rather than an asparagine residue at the penultimate position (summary by Bartuski et al., 1997 [PubMed 9268635]).[supplied by OMIM, Jan 2010]

Subcellular Location:

Cytoplasm.

Similarity:

Belongs to the serpin family. Ov-serpin subfamily.

SWISS:

P50452

Gene ID:

5271

Database links:

[Entrez Gene: 5271](#) Human

[Entrez Gene: 20725](#) Mouse

[Entrez Gene: 288937](#) Rat

[Omim: 601697](#) Human

[SwissProt: P50452](#) Human

[SwissProt: O08800](#) Mouse

[Unigene: 368077](#) Human

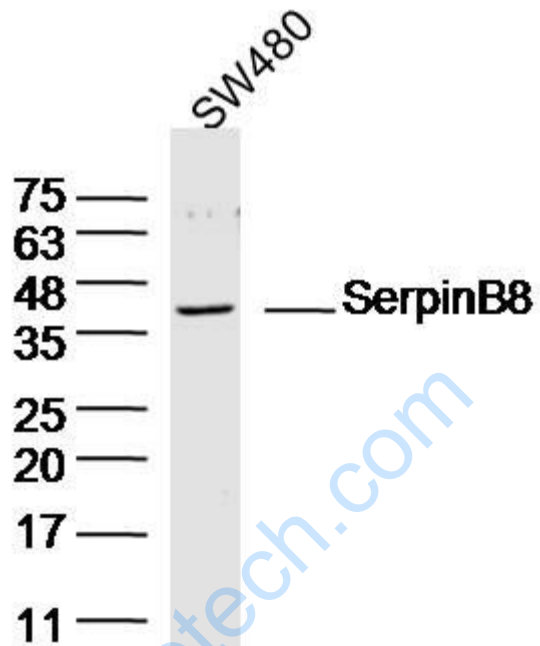
[Unigene: 83909](#) Mouse

[Unigene: 104823](#) Rat

Important Note:

This product as supplied is intended for research use only, not for use in human, therapeutic or diagnostic applications.

Picture:



Sample: SW480(human) Cell Lysate at 40 ug

Primary: Anti-SerpinB8 (SL19660R) at 1/300 dilution

Secondary: IRDye800CW Goat Anti-Rabbit IgG at 1/20000 dilution

Predicted band size: 43 kD

Observed band size: 43 kD