



Rabbit Anti-SETD3 antibody

SL19668R

Product Name:	SETD3
Chinese Name:	组蛋白赖氨酸N-甲基SETD3抗体
Alias:	C14orf154; Chromosome 14 open reading frame 154; DKFZp761E1415; FLJ23027; Histone lysine N methyltransferase setd3; MGC87236; SET domain containing 3; SET domain containing protein 3; SETD 3; SETD3。
Organism Species:	Rabbit
Clonality:	Polyclonal
React Species:	Human,Mouse,Rat,Rhesus monkey, Xenopus tropicalis
Applications:	WB=1:500-2000ELISA=1:500-1000IHC-P=1:400-800IHC-F=1:400-800ICC=1:100-500IF=1:100-500 (Paraffin sections need antigen repair) not yet tested in other applications. optimal dilutions/concentrations should be determined by the end user.
Molecular weight:	67kDa
Cellular localization:	The nucleus
Form:	Lyophilized or Liquid
Concentration:	1mg/ml
immunogen:	KLH conjugated synthetic peptide derived from human SETD3:301-400/594
Lsotype:	IgG
Purification:	affinity purified by Protein A
Storage Buffer:	0.01M TBS(pH7.4) with 1% BSA, 0.03% Proclin300 and 50% Glycerol.
Storage:	Store at -20 °C for one year. Avoid repeated freeze/thaw cycles. The lyophilized antibody is stable at room temperature for at least one month and for greater than a year when kept at -20°C. When reconstituted in sterile pH 7.4 0.01M PBS or diluent of antibody the antibody is stable for at least two weeks at 2-4 °C.
PubMed:	PubMed
Product Detail:	SETD3 contains 1 SET domain. The function of the SETD3 protein remains unknown. There are 3 isoforms produced by alternative splicing. Function: Histone methyltransferase that methylates 'Lys-36' of histone H3 (H3K36me). H3 'Lys-

36' methylation represents a specific tag for epigenetic transcriptional activation (By similarity)

Subcellular Location:

Nuclear

Similarity:

Belongs to the class V-like SAM-binding methyltransferase superfamily. Histone-lysine methyltransferase family. SETD3 subfamily.

SWISS:

Q86TU7

Gene ID:

84193

Database links:

[Entrez Gene: 423445](#) Chicken

[Entrez Gene: 512324](#) Cow

[Entrez Gene: 490852](#) Dog

[Entrez Gene: 84193](#) Human

[Entrez Gene: 52690](#) Mouse

[Entrez Gene: 100152552](#) Pig

[Entrez Gene: 299295](#) Rat

[Entrez Gene: 705369](#) Rhesus monkey

[Entrez Gene: 549331](#) Xenopus tropicalis

[Entrez Gene: 337193](#) Zebrafish

[SwissProt: Q5ZML9](#) Chicken

[SwissProt: E2RBS6](#) Dog

[SwissProt: Q86TU7](#) Human

[SwissProt: Q91WC0](#) Mouse

[SwissProt: B7ZUF3](#) Xenopus tropicalis

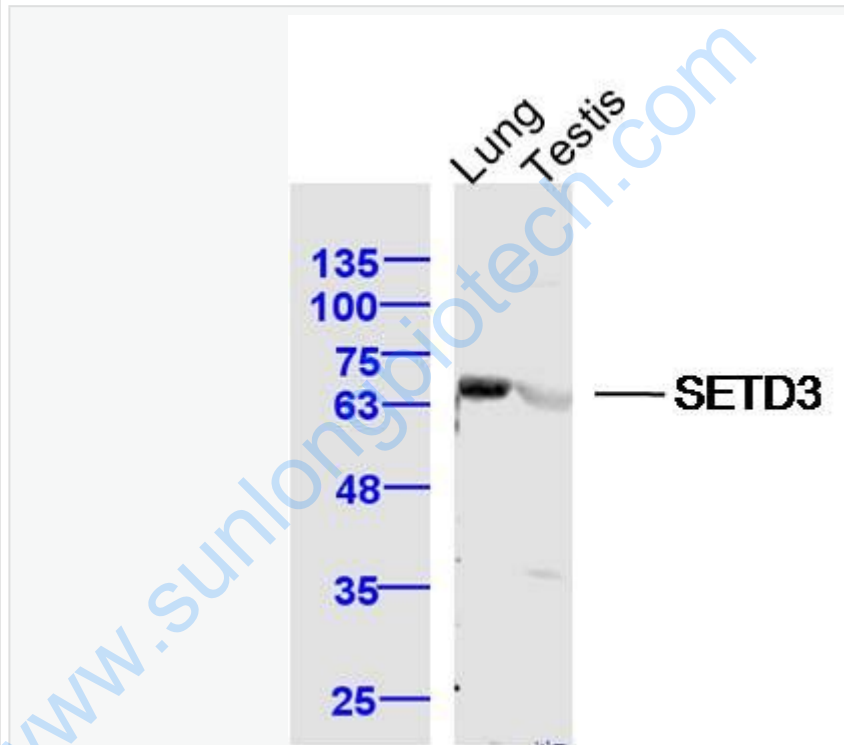
[SwissProt: Q7SXS7](#) Zebrafish

[Unigene: 510407](#) Human

Important Note:

This product as supplied is intended for research use only, not for use in human, therapeutic or diagnostic applications.

Picture:



Sample:

Lung (Mouse) Lysate at 40 ug

Testis (Mouse) Lysate at 40 ug

Primary: Anti-SETD3 (SL19668R) at 1/300 dilution

Secondary: IRDye800CW Goat Anti-Rabbit IgG at 1/20000 dilution

Predicted band size: 69 kD

	Observed band size: 69 kD
--	---------------------------

www.sunlongbiotech.com