



## Rabbit Anti-SH3BP5 antibody

SL19752R

|                               |   |
|-------------------------------|---|
| <b>Product Name:</b>          | SH3BP5  |
| <b>Chinese Name:</b>          | SH3结构域Binding protein5抗体  |
| <b>Alias:</b>                 | 3BP5_HUMAN; OTTHUMP00000208289; OTTHUMP00000208291; OTTHUMP00000208294; SAB; SH3 binding protein; SH3 domain binding protein 5 (BTK associated); SH3 domain binding protein 5; SH3 domain binding protein that preferentially associates with BTK; SH3 domain-binding protein 5; SH3 domain-binding protein that preferentially associates with BTK; SH3 domainbinding protein 5; SH3BP 5; SH3BP-5; Sh3bp5. |
| <b>Organism Species:</b>      | Rabbit  |
| <b>Clonality:</b>             | Polyclonal  |
| <b>React Species:</b>         | Human,Mouse,Rat,Chicken,Dog,Pig,Cow,Horse,Rabbit,Zebrafish,   |
| <b>Applications:</b>          | WB=1:500-2000IHC-P=1:400-800IHC-F=1:400-800ICC=1:100-500IF=1:100-500 (Paraffin sections need antigen repair)<br>not yet tested in other applications.<br>optimal dilutions/concentrations should be determined by the end user.   |
| <b>Molecular weight:</b>      | 50kDa   |
| <b>Cellular localization:</b> | cytoplasmic   |
| <b>Form:</b>                  | Lyophilized or Liquid   |
| <b>Concentration:</b>         | 1mg/ml  |
| <b>immunogen:</b>             | KLH conjugated synthetic peptide derived from human SH3BP5:1-100/455  |
| <b>Lsotype:</b>               | IgG   |
| <b>Purification:</b>          | affinity purified by Protein A  |
| <b>Storage Buffer:</b>        | 0.01M TBS(pH7.4) with 1% BSA, 0.03% Proclin300 and 50% Glycerol.  |
| <b>Storage:</b>               | Store at -20 °C for one year. Avoid repeated freeze/thaw cycles. The lyophilized antibody is stable at room temperature for at least one month and for greater than a year when kept at -20°C. When reconstituted in sterile pH 7.4 0.01M PBS or diluent of antibody the antibody is stable for at least two weeks at 2-4 °C.   |
| <b>PubMed:</b>                | <a href="#">PubMed</a>  |
| <b>Product Detail:</b>        | Inhibits the auto- and transphosphorylation activity of BTK. Plays a negative regulatory role in BTK-related cytoplasmic signaling in B-cells. May be involved in BCR-induced   |

apoptotic cell death.

**Subcellular Location:**

Mitochondrion.

**Tissue Specificity:**

Highly expressed in testis and ovaries. It is also expressed in a variety of tissues including spleen, lymph node, thymus, bone marrow, fetal liver, colon, small intestine and prostate.

**Similarity:**

Belongs to the SH3BP5 family.

**SWISS:**

O60239

**Gene ID:**

9467

**Database links:**

[Entrez Gene: 9467](#) Human

[Entrez Gene: 520254](#) Cow

[Entrez Gene: 80851](#) Human

[Entrez Gene: 24056](#) Mouse

[Entrez Gene: 79566](#) Mouse

[Entrez Gene: 117186](#) Rat

[Omim: 605612](#) Human

[SwissProt: Q0V8K7](#) Cow

[SwissProt: O60239](#) Human

[SwissProt: Q7L8J4](#) Human

[SwissProt: Q99LH9](#) Mouse

[SwissProt: Q9Z131](#) Mouse

[SwissProt: Q91Y80](#) Rat

[Unigene: 11005](#) Cow

[Unigene: 257761](#) Human

[Unigene: 726063](#) Human

[Unigene: 290534](#) Mouse

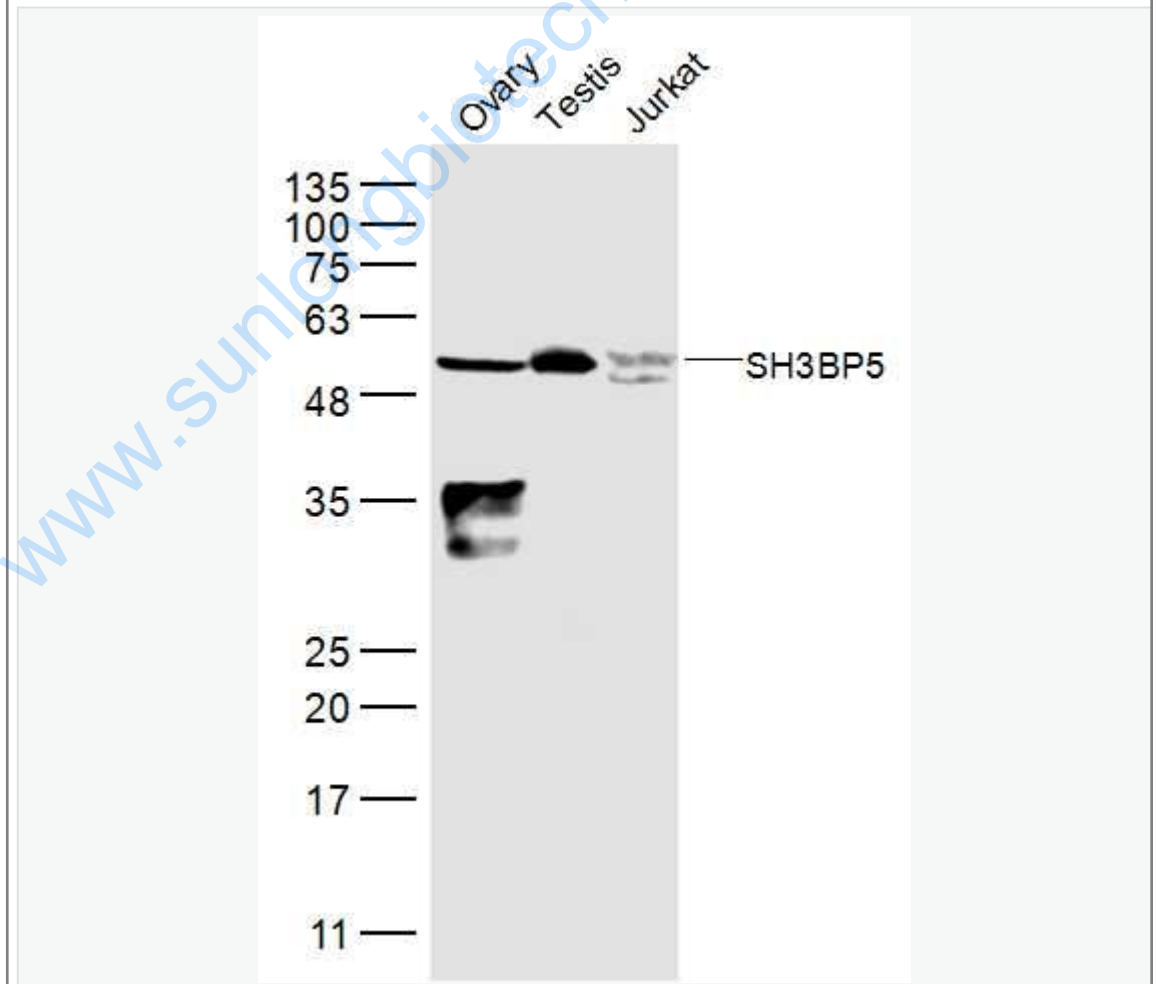
[Unigene: 383198](#) Mouse

[Unigene: 163321](#) Rat

**Important Note:**

This product as supplied is intended for research use only, not for use in human, therapeutic or diagnostic applications.

Picture:



Sample:

Ovary (Mouse) Lysate at 40 ug

Testis (Mouse) Lysate at 40 ug

Jurkat (Human) Cell Lysate at 30 ug

Primary: Anti-SH3BP5 (SL19752R) at 1/300 dilution

Secondary: IRDye800CW Goat Anti-Rabbit IgG at 1/20000 dilution

Predicted band size: 50 kD

Observed band size: 50 kD

[www.sunlongbiotech.com](http://www.sunlongbiotech.com)