



## Rabbit Anti-RBM22 antibody

SL19767R

<b>Product Name:</b>	RBM22
<b>Chinese Name:</b>	RNABinding protein22抗体
<b>Alias:</b>	Cwc2; FLJ10290; fSAP47; Functional spliceosome associated protein 47; Pre mRNA splicing factor RBM22; Pre-mRNA-splicing factor RBM22; RBM 22; rbm22; RBM22_HUMAN; RNA binding motif protein 22; RNA-binding motif protein 22; ZC3H16; Zinc finger CCCH domain containing protein 16; Zinc finger CCCH domain-containing protein 16.
<b>Organism Species:</b>	Rabbit
<b>Clonality:</b>	Polyclonal
<b>React Species:</b>	Human,Mouse,Rat,Dog,Pig,Cow,Horse,Rabbit,Sheep,
<b>Applications:</b>	WB=1:500-2000ELISA=1:500-1000IHC-P=1:400-800IHC-F=1:400-800ICC=1:100-500IF=1:100-500 (Paraffin sections need antigen repair) not yet tested in other applications. optimal dilutions/concentrations should be determined by the end user.
<b>Molecular weight:</b>	47kDa
<b>Cellular localization:</b>	The nucleuscytoplasmic
<b>Form:</b>	Lyophilized or Liquid
<b>Concentration:</b>	1mg/ml
<b>immunogen:</b>	KLH conjugated synthetic peptide derived from human RBM22:101-300/420
<b>Lsotype:</b>	IgG
<b>Purification:</b>	affinity purified by Protein A
<b>Storage Buffer:</b>	0.01M TBS(pH7.4) with 1% BSA, 0.03% Proclin300 and 50% Glycerol.
<b>Storage:</b>	Store at -20 °C for one year. Avoid repeated freeze/thaw cycles. The lyophilized antibody is stable at room temperature for at least one month and for greater than a year when kept at -20°C. When reconstituted in sterile pH 7.4 0.01M PBS or diluent of antibody the antibody is stable for at least two weeks at 2-4 °C.
<b>PubMed:</b>	<a href="#">PubMed</a>
<b>Product Detail:</b>	This gene encodes an RNA binding protein. The encoded protein may play a role in cell division and may be involved in pre-mRNA splicing. Related pseudogenes exist on chromosomes 6, 7, 9, 13, 16, 18, and X. [provided by RefSeq, Mar 2009]

**Function:**

Involved in the first step of pre-mRNA splicing. Binds directly to the internal stem-loop (ISL) domain of the U6 snRNA and to the pre-mRNA intron near the 5' splice site during the activation and catalytic phases of the spliceosome cycle. Involved in both translocations of the nuclear SLU7 to the cytoplasm and the cytosolic calcium-binding protein PDCD6 to the nucleus upon cellular stress responses.

**Subcellular Location:**

Nucleus. Cytoplasm. Mainly located in the nucleus. Translocated from the nucleus to the cytoplasm after heat shock cell treatment. May be shuttling between the nucleus and the cytosol.

**Similarity:**

Belongs to the SLT11 family.  
Contains 1 C3H1-type zinc finger.  
Contains 1 RRM (RNA recognition motif) domain.

**SWISS:**

Q9NW64

**Gene ID:**

55696

**Database links:**

[Entrez Gene: 512330](#) Cow

[Entrez Gene: 489184](#) Dog

[Entrez Gene: 55696](#) Human

[Entrez Gene: 66810](#) Mouse

[Entrez Gene: 100345063](#) Rabbit

[Entrez Gene: 307410](#) Rat

[Omim: 612430](#) Human

[SwissProt: Q3B7L8](#) Cow

[SwissProt: Q9NW64](#) Human

[SwissProt: Q8BHS3](#) Mouse

[SwissProt: Q4V7D7](#) Rat

[Unigene: 713564](#) Human

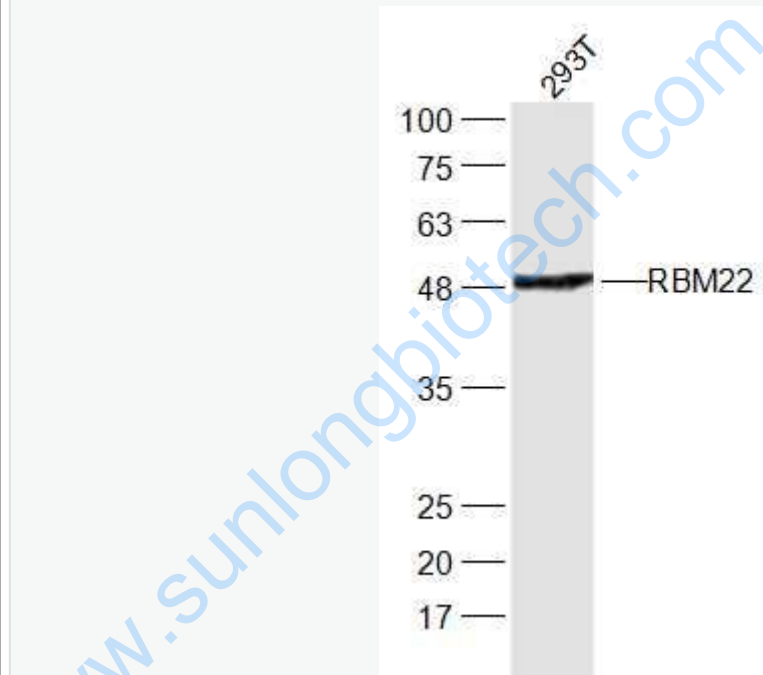
[Unigene: 275106](#) Mouse

[Unigene: 105130](#) Rat

**Important Note:**

This product as supplied is intended for research use only, not for use in human, therapeutic or diagnostic applications.

**Picture:**



Sample:

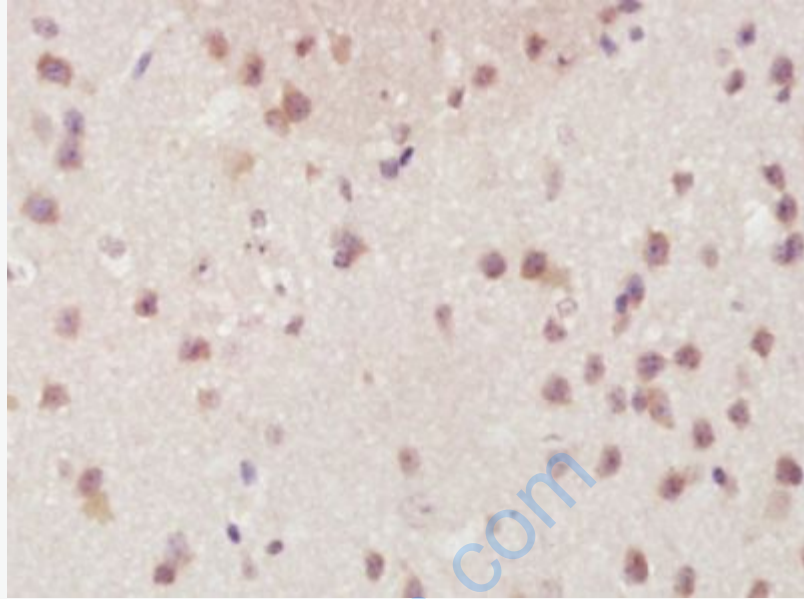
293T(Human) Cell Lysate at 30 ug

Primary: Anti-RBM22 (SL19767R) at 1/300 dilution

Secondary: IRDye800CW Goat Anti-Rabbit IgG at 1/20000 dilution

Predicted band size: 47 kD

Observed band size: 47 kD



Paraformaldehyde-fixed, paraffin embedded (Mouse brain); Antigen retrieval by boiling in sodium citrate buffer (pH6.0) for 15min; Block endogenous peroxidase by 3% hydrogen peroxide for 20 minutes; Blocking buffer (normal goat serum) at 37°C for 30min; Antibody incubation with (RBM22) Polyclonal Antibody, Unconjugated (SL19767R) at 1:400 overnight at 4°C, followed by operating according to SP Kit(Rabbit) (sp-0023) instructions and DAB staining.