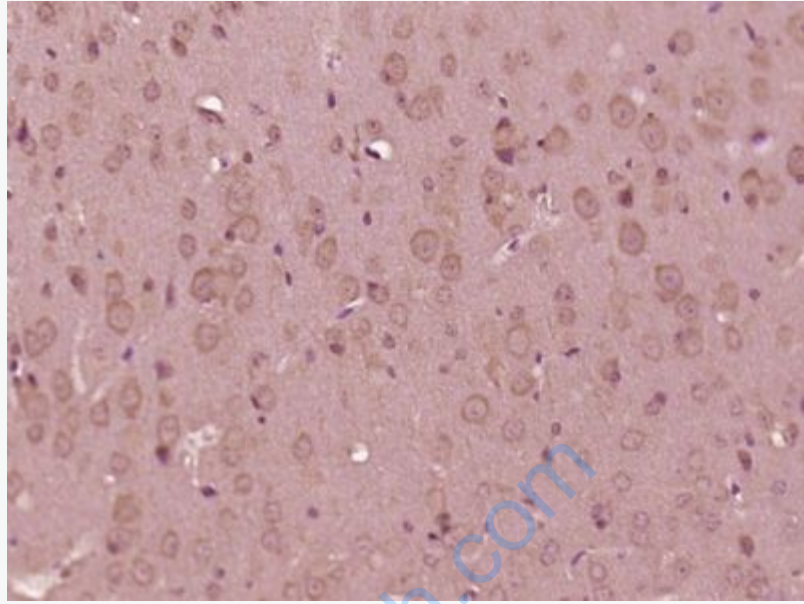




Rabbit Anti-RBM25 antibody

SL19768R

Product Name:	RBM25
Chinese Name:	RNABinding protein25抗体
Alias:	Arg/Glu/Asp rich protein, 120 kDa; Arg/Glu/Asp-rich protein of 120 kDa; fSAP94; functional spliceosome-associated protein 94; NET52; Protein S164; Rbm25; RBM25_HUMAN; RED120; RNA binding motif protein 25; RNA binding region (RNP1, RRM) containing 7; RNA-binding motif protein 25; RNA-binding protein 25; RNA-binding region-containing protein 7; RNPC7; S164; Snu71; U1 small nuclear ribonucleoprotein 1SNRP homolog.
Organism Species:	Rabbit
Clonality:	Polyclonal
React Species:	Human,Mouse,Rat,Cow,Horse,Rabbit,Sheep,
Applications:	ELISA=1:500-1000IHC-P=1:400-800IHC-F=1:400-800ICC=1:100-500IF=1:100-500 (Paraffin sections need antigen repair) not yet tested in other applications. optimal dilutions/concentrations should be determined by the end user.
Molecular weight:	100kDa
Cellular localization:	The nucleuscytoplasmic
Form:	Lyophilized or Liquid
Concentration:	1mg/ml
immunogen:	KLH conjugated synthetic peptide derived from human RBM25:671-770/843
Lsotype:	IgG
Purification:	affinity purified by Protein A
Storage Buffer:	0.01M TBS(pH7.4) with 1% BSA, 0.03% Proclin300 and 50% Glycerol.
Storage:	Store at -20 °C for one year. Avoid repeated freeze/thaw cycles. The lyophilized antibody is stable at room temperature for at least one month and for greater than a year when kept at -20°C. When reconstituted in sterile pH 7.4 0.01M PBS or diluent of antibody the antibody is stable for at least two weeks at 2-4 °C.
PubMed:	PubMed
Product Detail:	



Picture:

Paraformaldehyde-fixed, paraffin embedded (Mouse brain); Antigen retrieval by boiling in sodium citrate buffer (pH6.0) for 15min; Block endogenous peroxidase by 3% hydrogen peroxide for 20 minutes; Blocking buffer (normal goat serum) at 37°C for 30min; Antibody incubation with (RBM25) Polyclonal Antibody, Unconjugated (SL19768R) at 1:500 overnight at 4°C, followed by a conjugated secondary (sp-0023) for 20 minutes and DAB staining.