



Rabbit Anti-RBM35A/ESRP1 antibody

SL19771R

Product Name:	RBM35A/ESRP1
Chinese Name:	RNABinding protein35A抗体
Alias:	Epithelial splicing regulatory protein 1; Esrp1; ESRP1_HUMAN; FLJ20171; RBM35A; RMB35A; RNA binding motif protein 35A; RNA-binding motif protein 35A; RNA-binding protein 35A.
Organism Species:	Rabbit
Clonality:	Polyclonal
React Species:	Human,Mouse,Rat,Dog,Pig,Rabbit,
Applications:	ELISA=1:500-1000IHC-P=1:400-800IHC-F=1:400-800ICC=1:100-500IF=1:100-500 (Paraffin sections need antigen repair) not yet tested in other applications. optimal dilutions/concentrations should be determined by the end user.
Molecular weight:	76kDa
Cellular localization:	The nucleus
Form:	Lyophilized or Liquid
Concentration:	1mg/ml
immunogen:	KLH conjugated synthetic peptide derived from human RBM35A:151-250/681
Lsotype:	IgG
Purification:	affinity purified by Protein A
Storage Buffer:	0.01M TBS(pH7.4) with 1% BSA, 0.03% Proclin300 and 50% Glycerol.
Storage:	Store at -20 °C for one year. Avoid repeated freeze/thaw cycles. The lyophilized antibody is stable at room temperature for at least one month and for greater than a year when kept at -20°C. When reconstituted in sterile pH 7.4 0.01M PBS or diluent of antibody the antibody is stable for at least two weeks at 2-4 °C.
PubMed:	PubMed
Product Detail:	ESRP1 is an epithelial cell-type-specific splicing regulator (Warzecha et al., 2009 [PubMed 19285943]).[supplied by OMIM, Aug 2009] Function: mRNA splicing factor that regulates the formation of epithelial cell-specific isoforms.

Specifically regulates the expression of FGFR2-IIIb, an epithelial cell-specific isoform of FGFR2. Also regulates the splicing of CD44, CTNND1, ENAH, 3 transcripts that undergo changes in splicing during the epithelial-to-mesenchymal transition (EMT). Acts by directly binding specific sequences in mRNAs. Binds the GU-rich sequence motifs in the ISE/ISS-3, a cis-element regulatory region present in the mRNA of FGFR2.

Subcellular Location:

Nucleus.

Tissue Specificity:

Epithelial cell-specific.

Similarity:

Belongs to the ESRP family.

Contains 3 RRM (RNA recognition motif) domains.

SWISS:

Q6NXG1

Gene ID:

54845

Database links:

[Entrez Gene: 538640](#) Cow

[Entrez Gene: 487054](#) Dog

[Entrez Gene: 100055214](#) Horse

[Entrez Gene: 54845](#) Human

[Entrez Gene: 207920](#) Mouse

[Entrez Gene: 100156237](#) Pig

[Entrez Gene: 500409](#) Rat

[Omim: 612959](#) Human

[SwissProt: Q6NXG1](#) Human

[SwissProt: Q3US41](#) Mouse

[SwissProt: B2RYD2](#) Rat

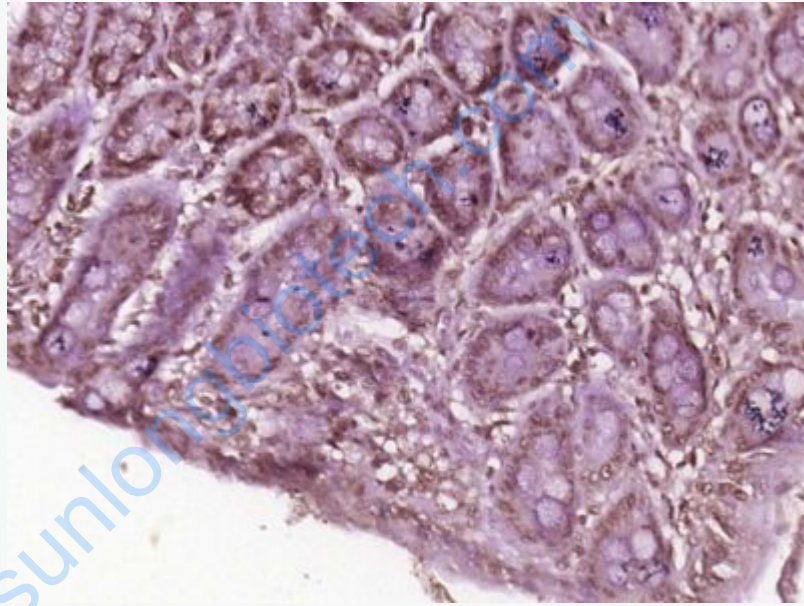
[Unigene: 487471](#) Human

[Unigene: 387719](#) Mouse

[Unigene: 161971](#) Rat

Important Note:

This product as supplied is intended for research use only, not for use in human, therapeutic or diagnostic applications.



Picture:

Paraformaldehyde-fixed, paraffin embedded (Rat colon); Antigen retrieval by boiling in sodium citrate buffer (pH6.0) for 15min; Block endogenous peroxidase by 3% hydrogen peroxide for 20 minutes; Blocking buffer (normal goat serum) at 37°C for 30min; Antibody incubation with (RBM35A) Polyclonal Antibody, Unconjugated (SL19771R) at 1:500 overnight at 4°C, followed by a conjugated secondary (sp-0023) for 20 minutes and DAB staining.