



Rabbit Anti-RBM6 antibody

SL19775R

Product Name:	RBM6
Chinese Name:	RNABinding protein6抗体
Alias:	3G2; 4930506F14Rik; DEF 3; DEF3; DKFZp686B0877; FLJ36517; g16; HLC 11; KIAA4015; Lung cancer antigen NY LU 12; Lung cancer antigen NY-LU-12; Lung cancer protooncogene 11; mKIAA4015; NY LU 12; Protein G16; RBM6; RBM6/RBM5 fusion; RBM6_HUMAN; RGD1560367; RNA binding motif protein 6; RNA-binding motif protein 6; RNA-binding protein 6; RNA-binding protein DEF-3.
Organism Species:	Rabbit
Clonality:	Polyclonal
React Species:	Human,Mouse,Rat,Chicken,Dog,Pig,Cow,Horse,Rabbit,Sheep,
Applications:	WB=1:500-2000ELISA=1:500-1000IHC-P=1:400-800IHC-F=1:400-800ICC=1:100-500IF=1:100-500 (Paraffin sections need antigen repair) not yet tested in other applications. optimal dilutions/concentrations should be determined by the end user.
Molecular weight:	129kDa
Cellular localization:	The nucleus
Form:	Lyophilized or Liquid
Concentration:	1mg/ml
immunogen:	KLH conjugated synthetic peptide derived from human RBM6:1031-1123/1123
Lsotype:	IgG
Purification:	affinity purified by Protein A
Storage Buffer:	0.01M TBS(pH7.4) with 1% BSA, 0.03% Proclin300 and 50% Glycerol.
Storage:	Store at -20 °C for one year. Avoid repeated freeze/thaw cycles. The lyophilized antibody is stable at room temperature for at least one month and for greater than a year when kept at -20°C. When reconstituted in sterile pH 7.4 0.01M PBS or diluent of antibody the antibody is stable for at least two weeks at 2-4 °C.
PubMed:	PubMed
Product Detail:	RBM6 (RNA Binding Motif Protein 6) is a Protein Coding gene. Gene Ontology (GO) annotations related to this gene include nucleic acid binding and RNA binding. An important paralog of this gene is RBM5.

Function:

Specifically binds poly(G) RNA homopolymers in vitro.

Subcellular Location:

Nucleus.

Tissue Specificity:

Ubiquitous in adults.

Similarity:

Contains 1 G-patch domain.

Contains 1 RRM (RNA recognition motif) domain.

SWISS:

P78332

Gene ID:

10180

Database links:

[Entrez Gene: 10180](#) Human

[Entrez Gene: 19654](#) Mouse

[Entrez Gene: 315997](#) Rat

[Omim: 606886](#) Human

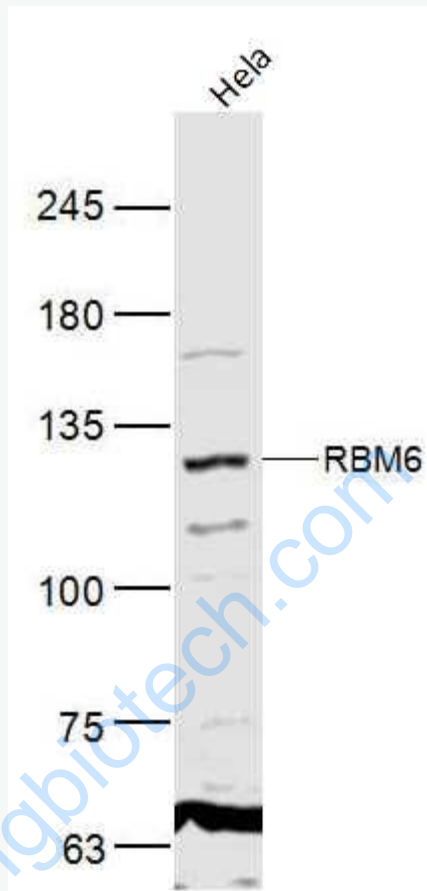
[SwissProt: P78332](#) Human

[Unigene: 696735](#) Human

Important Note:

This product as supplied is intended for research use only, not for use in human, therapeutic or diagnostic applications.

Picture:



Sample:

HeLa(Human) Cell Lysate at 40 ug

Primary: Anti-RBM6 (SL19775R) at 1/300 dilution

Secondary: IRDye800CW Goat Anti-Rabbit IgG at 1/20000 dilution

Predicted band size: 129 kD

Observed band size: 129 kD