



Rabbit Anti-RBMS1/Cervical cancer oncogene 4 antibody

SL19776R

Product Name:	RBMS1/Cervical cancer oncogene 4
Chinese Name:	宫颈癌症基因4抗体
Alias:	c myc gene single strand binding protein 2; C2orf12; Cervical cancer oncogene 4; HCC 4; MSSP 2; MSSP 3; MSSP; MSSP-1; MSSP-2; MSSP-3; MSSP1; RBMS1; RBMS1_HUMAN; RNA binding motif, single stranded interacting protein 1; RNA-binding motif; SCR2; Single stranded DNA binding protein MSSP 1; Single-stranded DNA-binding protein MSSP-1; single-stranded-interacting protein 1; suppressor of cdc 2 (cdc13) with RNA binding motif 2; Suppressor of CDC2 with RNA binding motif 2; Suppressor of CDC2 with RNA-binding motif 2; YC1.
Organism Species:	Rabbit
Clonality:	Polyclonal
React Species:	Human,Mouse,Rat,Dog,Pig,Cow,Horse,Rabbit,Sheep,
Applications:	WB=1:500-2000ELISA=1:500-1000IHC-P=1:400-800IHC-F=1:400-800ICC=1:100-500IF=1:100-500 (Paraffin sections need antigen repair) not yet tested in other applications. optimal dilutions/concentrations should be determined by the end user.
Molecular weight:	45kDa
Cellular localization:	The nucleus
Form:	Lyophilized or Liquid
Concentration:	1mg/ml
immunogen:	KLH conjugated synthetic peptide derived from human RBMS1/Cervical cancer oncogene 4:181-280/406
Lsotype:	IgG
Purification:	affinity purified by Protein A
Storage Buffer:	0.01M TBS(pH7.4) with 1% BSA, 0.03% Proclin300 and 50% Glycerol.
Storage:	Store at -20 °C for one year. Avoid repeated freeze/thaw cycles. The lyophilized antibody is stable at room temperature for at least one month and for greater than a year when kept at -20°C. When reconstituted in sterile pH 7.4 0.01M PBS or diluent of

	antibody the antibody is stable for at least two weeks at 2-4 °C.
PubMed:	PubMed
Product Detail:	<p>This gene encodes a member of a small family of proteins which bind single stranded DNA/RNA. These proteins are characterized by the presence of two sets of ribonucleoprotein consensus sequence (RNP-CS) that contain conserved motifs, RNP1 and RNP2, originally described in RNA binding proteins, and required for DNA binding. These proteins have been implicated in such diverse functions as DNA replication, gene transcription, cell cycle progression and apoptosis. Several transcript variants, resulting from alternative splicing and encoding different isoforms, have been described. A pseudogene for this locus is found on chromosome 12. [provided by RefSeq, Feb 2009]</p> <p>Function: Single-stranded DNA binding protein that interacts with the region upstream of the MYC gene. Binds specifically to the DNA sequence motif 5'-[AT]CT[AT][AT]T-3'. Probably has a role in DNA replication.</p> <p>Subcellular Location: Nucleus.</p> <p>Tissue Specificity: Highest amounts are found in placenta, lung and heart.</p> <p>Similarity: Contains 2 RRM (RNA recognition motif) domains.</p> <p>SWISS: P29558</p> <p>Gene ID: 5937</p> <p>Database links:</p> <p>Entrez Gene: 395880 Chicken</p> <p>Entrez Gene: 526135 Cow</p> <p>Entrez Gene: 5937 Human</p> <p>Entrez Gene: 56878 Mouse</p> <p>Entrez Gene: 362138 Rat</p> <p>GenBank: NP_058520.1 Human</p>

[Omim: 602310](#) Human

[SwissProt: Q3ZBP3](#) Cow

[SwissProt: P29558](#) Human

[SwissProt: Q91W59](#) Mouse

[SwissProt: Q5PQP1](#) Rat

[Unigene: 470412](#) Human

[Unigene: 708357](#) Human

[Unigene: 259667](#) Mouse

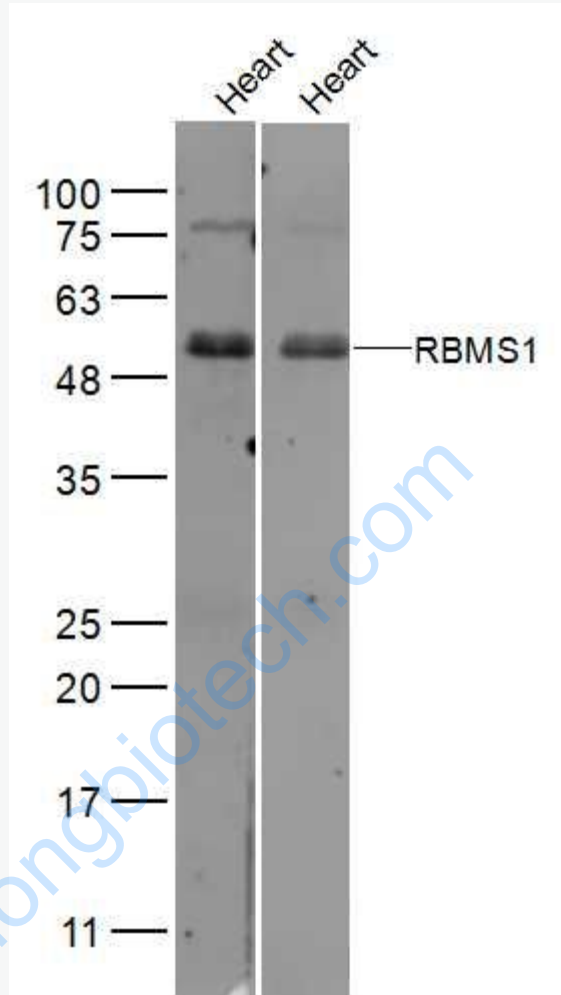
[Unigene: 482338](#) Mouse

[Unigene: 98522](#) Rat

Important Note:

This product as supplied is intended for research use only, not for use in human, therapeutic or diagnostic applications.

Picture:



Sample:

Heart (Mouse) Lysate at 40 ug

Heart (Mouse) Lysate at 40 ug

Primary: Anti-RBMS1 (SL19776R) at 1/500 dilution

Anti-RBMS1 (SL19776R) at 1/20000 dilution

Secondary: IRDye800CW Goat Anti-Rabbit IgG at 1/20000 dilution

Predicted band size: 45 kD

Observed band size: 50 kD

