



Rabbit Anti-RBPSUHL antibody

SL19783R

Product Name:	RBPSUHL
Chinese Name:	转录因子RBPL抗体
Alias:	hCG_38385; RBP L; RBP-L; RBPL; RBPSUHL; Recombination signal binding protein for immunoglobulin kappa J region like; Recombining binding protein L; Recombining binding protein suppressor of hairless (Drosophila)-like; Recombining binding protein suppressor of hairless (Drosophila)-like, isoform CRA_b; Recombining binding protein suppressor of hairless like protein; RP3 453C12.2 002; RP3 453C12.2 002; SUH; SUHL; Transcription factor RBP L; Transcription factor RBP-L; Transcription factor RBPL.
Organism Species:	Rabbit
Clonality:	Polyclonal
React Species:	Human,Mouse,Rat,Horse,
Applications:	WB=1:500-2000ELISA=1:500-1000 not yet tested in other applications. optimal dilutions/concentrations should be determined by the end user.
Molecular weight:	57kDa
Cellular localization:	The nucleus
Form:	Lyophilized or Liquid
Concentration:	1mg/ml
immunogen:	KLH conjugated synthetic peptide derived from human RBPSUHL:301-400/517
Lsotype:	IgG
Purification:	affinity purified by Protein A
Storage Buffer:	0.01M TBS(pH7.4) with 1% BSA, 0.03% Proclin300 and 50% Glycerol.
Storage:	Store at -20 °C for one year. Avoid repeated freeze/thaw cycles. The lyophilized antibody is stable at room temperature for at least one month and for greater than a year when kept at -20°C. When reconstituted in sterile pH 7.4 0.01M PBS or diluent of antibody the antibody is stable for at least two weeks at 2-4 °C.
PubMed:	PubMed
Product Detail:	This gene encodes a member of the suppressor of hairless protein family. A similar protein in mouse is a transcription factor that binds to DNA sequences almost identical

to that bound by the Notch receptor signaling pathway transcription factor recombining binding protein J. The mouse protein has been shown to activate transcription in concert with Epstein-Barr virus nuclear antigen-2. Alternative splicing results in multiple transcript variants. [provided by RefSeq, Jul 2013]

Function:

Putative transcription factor, which cooperates with EBNA2 to activate transcription.

Subunit:

Interacts weakly with EBNA2. Does not interact with any Notch proteins (By similarity).

Subcellular Location:

Nuclear

Similarity:

Belongs to the Su(H) family; Contains 1 IPT/TIG domain.

SWISS:

Q9UBG7

Gene ID:

11317

Database links:

[Entrez Gene: 11317](#) Human

[Entrez Gene: 19668](#) Mouse

[Entrez Gene: 362268](#) Rat

[Omim: 147183](#) Human

[SwissProt: Q9UBG7](#) Human

[SwissProt: O08674](#) Mouse

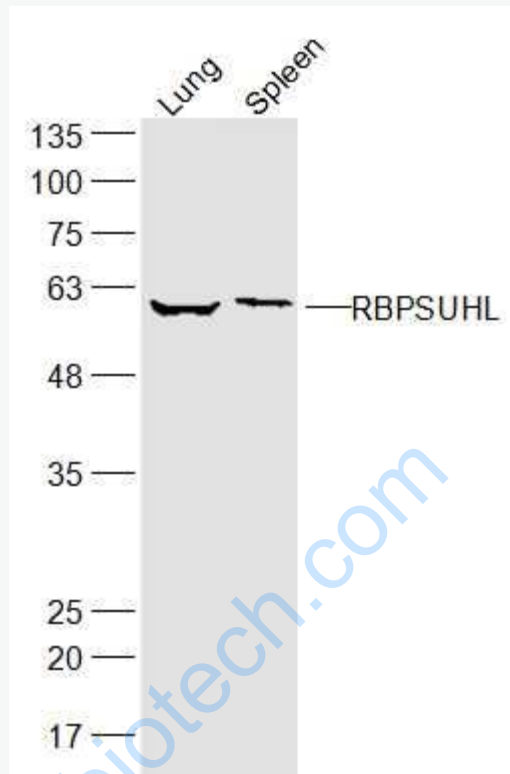
[Unigene: 248217](#) Human

[Unigene: 473794](#) Mouse

Important Note:

This product as supplied is intended for research use only, not for use in human, therapeutic or diagnostic applications.

Picture:



Sample:

Lung (Mouse) Lysate at 40 ug

Spleen (Mouse) Lysate at 40 ug

Primary: Anti-RBPSUHL (SL19783R) at 1/300 dilution

Secondary: IRDye800CW Goat Anti-Rabbit IgG at 1/20000 dilution

Predicted band size: 57 kD

Observed band size: 57 kD