



Rabbit Anti-RECQ1 antibody

SL19784R

Product Name:	RECQ1
Chinese Name:	DNA解旋酶Q1样抗体
Alias:	ATP dependent DNA helicase Q1; DNA helicase Q1 like; DNA helicase RecQ like type 1; RECQ L1; RecQ protein like 1; RecQ protein like; RECQL; RECQL1.
Organism Species:	Rabbit
Clonality:	Polyclonal
React Species:	Human,Rat,Dog,Pig,Cow,Horse,Rabbit,Sheep,
Applications:	ELISA=1:500-1000IHC-P=1:400-800IHC-F=1:400-800ICC=1:100-500IF=1:100-500 (Paraffin sections need antigen repair) not yet tested in other applications. optimal dilutions/concentrations should be determined by the end user.
Molecular weight:	72kDa
Cellular localization:	The nucleus
Form:	Lyophilized or Liquid
Concentration:	1mg/ml
immunogen:	KLH conjugated synthetic peptide derived from human RECQ1:231-330/649
Lsotype:	IgG
Purification:	affinity purified by Protein A
Storage Buffer:	0.01M TBS(pH7.4) with 1% BSA, 0.03% Proclin300 and 50% Glycerol.
Storage:	Store at -20 °C for one year. Avoid repeated freeze/thaw cycles. The lyophilized antibody is stable at room temperature for at least one month and for greater than a year when kept at -20°C. When reconstituted in sterile pH 7.4 0.01M PBS or diluent of antibody the antibody is stable for at least two weeks at 2-4 °C.
PubMed:	PubMed
Product Detail:	The protein encoded by this gene is a member of the RecQ DNA helicase family. DNA helicases are enzymes involved in various types of DNA repair, including mismatch repair, nucleotide excision repair and direct repair. Some members of this family are associated with genetic disorders with predisposition to malignancy and chromosomal instability. The biological function of this helicase has not yet been determined. Two alternatively spliced transcripts, which encode the same isoform but differ in their 5' and

3' UTRs, have been described. [provided by RefSeq, Jul 2008]

Function:

DNA helicase that may play a role in the repair of DNA that is damaged by ultraviolet light or other mutagens. Exhibits a magnesium-dependent ATP-dependent DNA-helicase activity that unwinds single- and double-stranded DNA in a 3'-5' direction.

Subunit:

Interacts with EXO1 and MLH1.

Subcellular Location:

Nuclear

Tissue Specificity:

High expression in heart, lung, skeletal muscle and kidney, low expression in brain.

Similarity:

Belongs to the helicase family. RecQ subfamily

Contains 1 helicase ATP-binding domain

Contains 1 helicase C-terminal domain.

SWISS:

P46063

Gene ID:

5965

Database links:

[Entrez Gene: 5965](#) Human

[Entrez Gene: 19691](#) Mouse

[Omin: 600537](#) Human

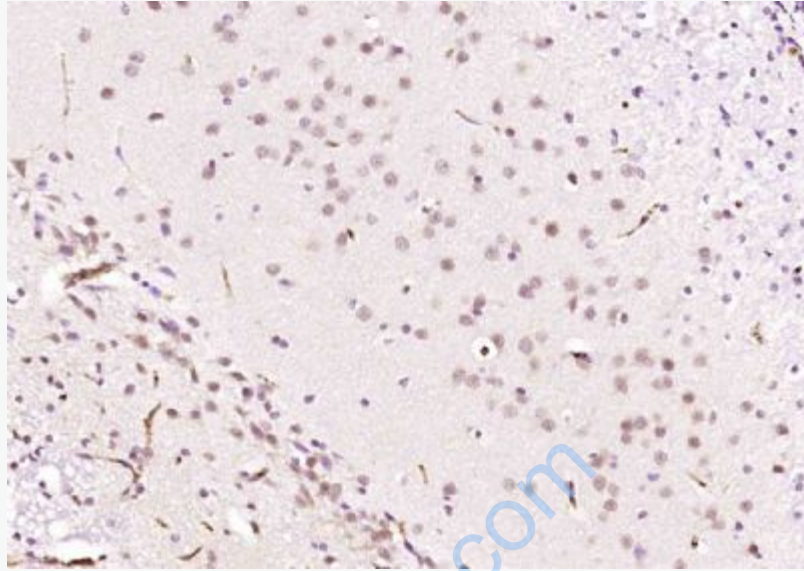
[SwissProt: P46063](#) Human

[SwissProt: Q9Z129](#) Mouse

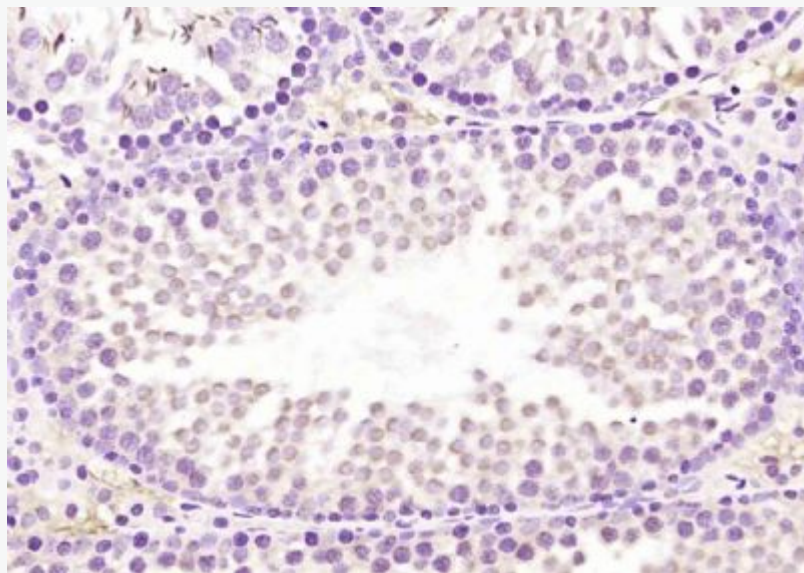
[Unigene: 235069](#) Human

Important Note:

This product as supplied is intended for research use only, not for use in human, therapeutic or diagnostic applications.



Paraformaldehyde-fixed, paraffin embedded (rat brain); Antigen retrieval by boiling in sodium citrate buffer (pH6.0) for 15min; Block endogenous peroxidase by 3% hydrogen peroxide for 20 minutes; Blocking buffer (normal goat serum) at 37°C for 30min; Antibody incubation with (RECQ1) Polyclonal Antibody, Unconjugated (SL19784R) at 1:200 overnight at 4°C, followed by operating according to SP Kit(Rabbit) (sp-0023) instructions and DAB staining.



Picture:

Paraformaldehyde-fixed, paraffin embedded (rat testis); Antigen retrieval by boiling in sodium citrate buffer (pH6.0) for 15min; Block endogenous peroxidase by 3% hydrogen peroxide for 20 minutes; Blocking buffer (normal goat serum) at 37°C for 30min; Antibody incubation with (RECQ1) Polyclonal Antibody, Unconjugated (SL19784R) at 1:200 overnight at 4°C, followed by operating according to SP Kit(Rabbit) (sp-0023) instructions and DAB staining.

www.sunlongbiotech.com